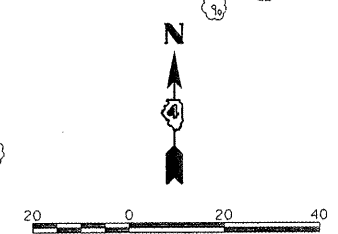
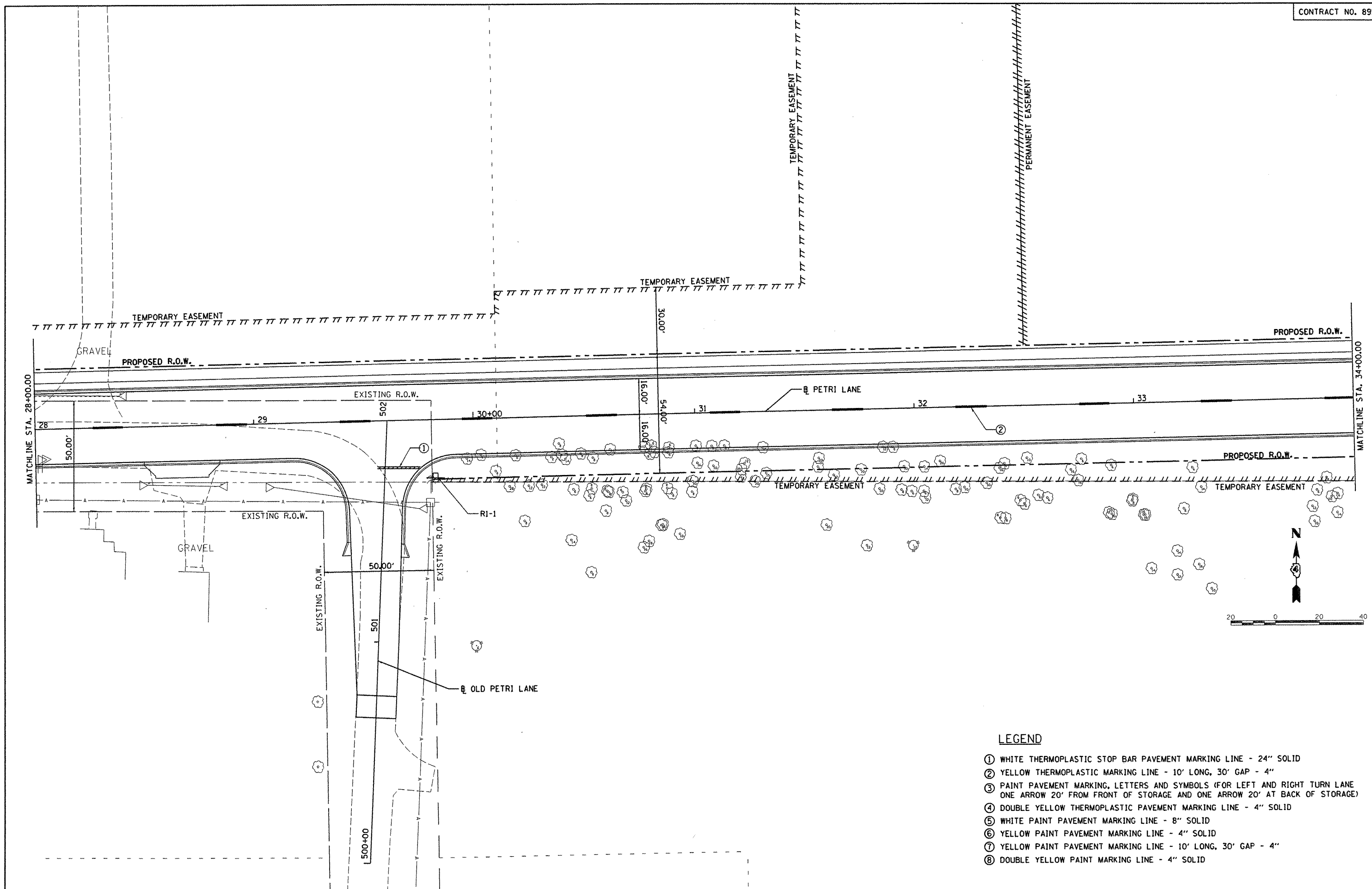


© Copyright Hanson Professional Services Inc. 2011
HANSON
 Hanson Professional Services Inc.



LEGEND

- ① WHITE THERMOPLASTIC STOP BAR PAVEMENT MARKING LINE - 24" SOLID
- ② YELLOW THERMOPLASTIC MARKING LINE - 10' LONG, 30' GAP - 4"
- ③ PAINT PAVEMENT MARKING, LETTERS AND SYMBOLS (FOR LEFT AND RIGHT TURN LANE ONE ARROW 20' FROM FRONT OF STORAGE AND ONE ARROW 20' AT BACK OF STORAGE)
- ④ DOUBLE YELLOW THERMOPLASTIC PAVEMENT MARKING LINE - 4" SOLID
- ⑤ WHITE PAINT PAVEMENT MARKING LINE - 8" SOLID
- ⑥ YELLOW PAINT PAVEMENT MARKING LINE - 4" SOLID
- ⑦ YELLOW PAINT PAVEMENT MARKING LINE - 10' LONG, 30' GAP - 4"
- ⑧ DOUBLE YELLOW PAINT MARKING LINE - 4" SOLID

FILE NAME =	USER NAME = dws000678	DESIGNED - DLC	REVISED -	STATE OF ILLINOIS DEPARTMENT OF TRANSPORTATION	PETRI LANE PAVEMENT MARKING PLAN	F.A.U. RTE.	SECTION	COUNTY	TOTAL SHEETS	SHEET NO.	
1:\08Jobs\08L0212A\CAD\Road\Sheet\c-104	prk.dgn	DRAWN - DLC	REVISED -			6698	10-00183-00-FP	TAZEWELL	81	50	
PLOT SCALE = 40,000' / in.		CHECKED - MGD	REVISED -			SCALE: 1"=20' SHEET NO. OF SHEETS STA. 28+00.00 TO STA. 34+00.00					
PLOT DATE = 09/14/2011		DATE - 9/14/2011	REVISED -			FED. ROAD DIST. NO. ILLINOIS FED. AID PROJECT M-5093 (154)					