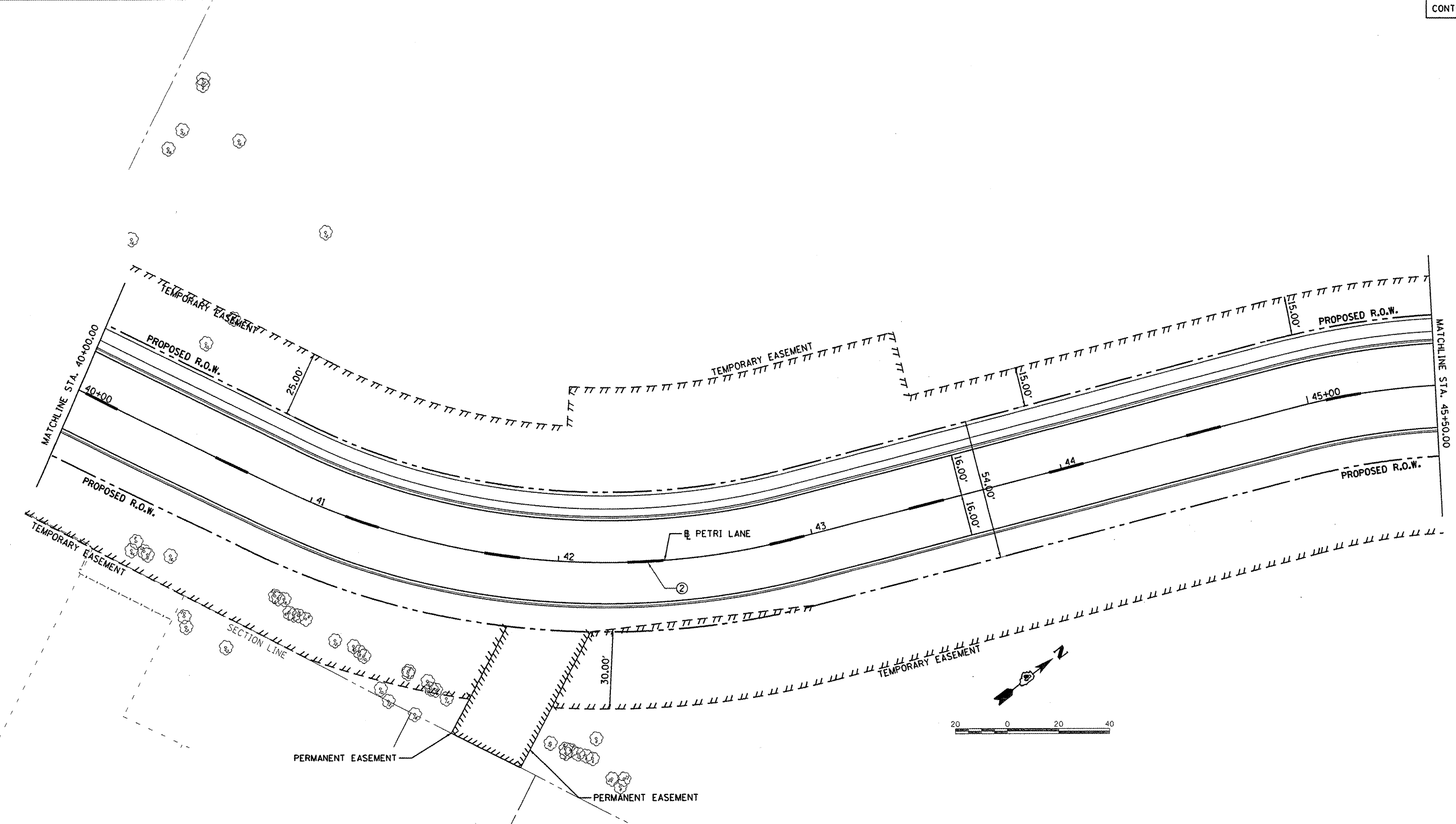


© Copyright Hanson Professional Services Inc. 2011  
**HANSON**  
 Hanson Professional Services Inc.



**LEGEND**

- ① WHITE THERMOPLASTIC STOP BAR PAVEMENT MARKING LINE - 24" SOLID
- ② YELLOW THERMOPLASTIC MARKING LINE - 10' LONG, 30' GAP - 4"
- ③ PAINT PAVEMENT MARKING, LETTERS AND SYMBOLS (FOR LEFT AND RIGHT TURN LANE ONE ARROW 20' FROM FRONT OF STORAGE AND ONE ARROW 20' AT BACK OF STORAGE)
- ④ DOUBLE YELLOW THERMOPLASTIC PAVEMENT MARKING LINE - 4" SOLID
- ⑤ WHITE PAINT PAVEMENT MARKING LINE - 8" SOLID
- ⑥ YELLOW PAINT PAVEMENT MARKING LINE - 4" SOLID
- ⑦ YELLOW PAINT PAVEMENT MARKING LINE - 10' LONG, 30' GAP - 4"
- ⑧ DOUBLE YELLOW PAINT MARKING LINE - 4" SOLID

FILE NAME = I:\08Jobs\08L0212A\CAD\Road\Sheet\c-106	USER NAME = dsvs00878	DESIGNED - DLC	REVISED -	<b>STATE OF ILLINOIS DEPARTMENT OF TRANSPORTATION</b>	<b>PETRI LANE PAVEMENT MARKING PLAN</b>		F.A.U. RTE. 6698	SECTION 10-00183-00-FP	COUNTY TAZEWELL	TOTAL SHEETS 81	SHEET NO. 52	
		DRAWN - DLC	REVISED -		SCALE: 1"=20'	SHEET NO. OF SHEETS	STA. 40+00.00 TO STA. 45+50.00	FED. ROAD DIST. NO. ILLINOIS FED. AID PROJECT M-5093 (154)				
		CHECKED - MGD	REVISED -									
		DATE - 9/14/2011	REVISED -									