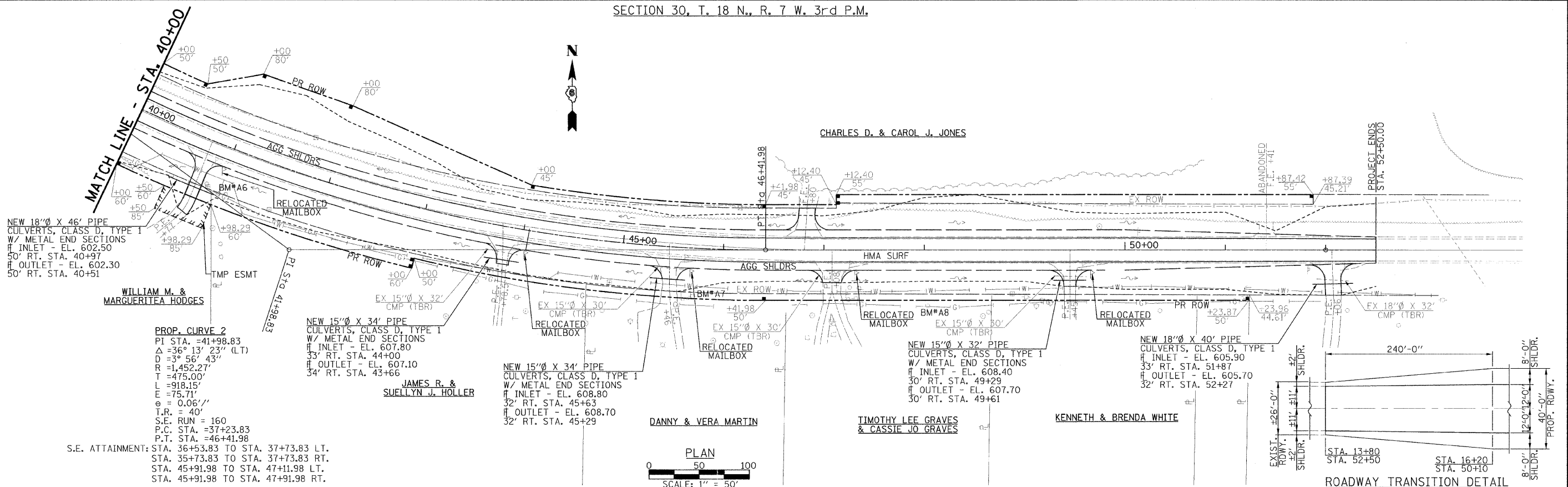


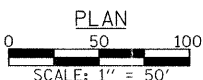
SECTION 30, T. 18 N., R. 7 W. 3rd P.M.



CHARLES D. & CAROL J. JONES



PROP. CURVE 2
 PI STA. = 41+98.83
 $\Delta = 36^\circ 13' 23''$ (LT)
 $D = 3^\circ 56' 43''$
 $R = 1,452.27'$
 $T = 475.00'$
 $L = 918.15'$
 $E = 75.71'$
 $\theta = 0.06''$
 $T.R. = 40'$
 $S.E. RUN = 160$
 $P.C. STA. = 37+23.83$
 $P.T. STA. = 46+41.98$
 S.E. ATTAINMENT: STA. 36+53.83 TO STA. 37+73.83 LT.
 STA. 35+73.83 TO STA. 37+73.83 RT.
 STA. 45+91.98 TO STA. 47+11.98 LT.
 STA. 45+91.98 TO STA. 47+91.98 RT.

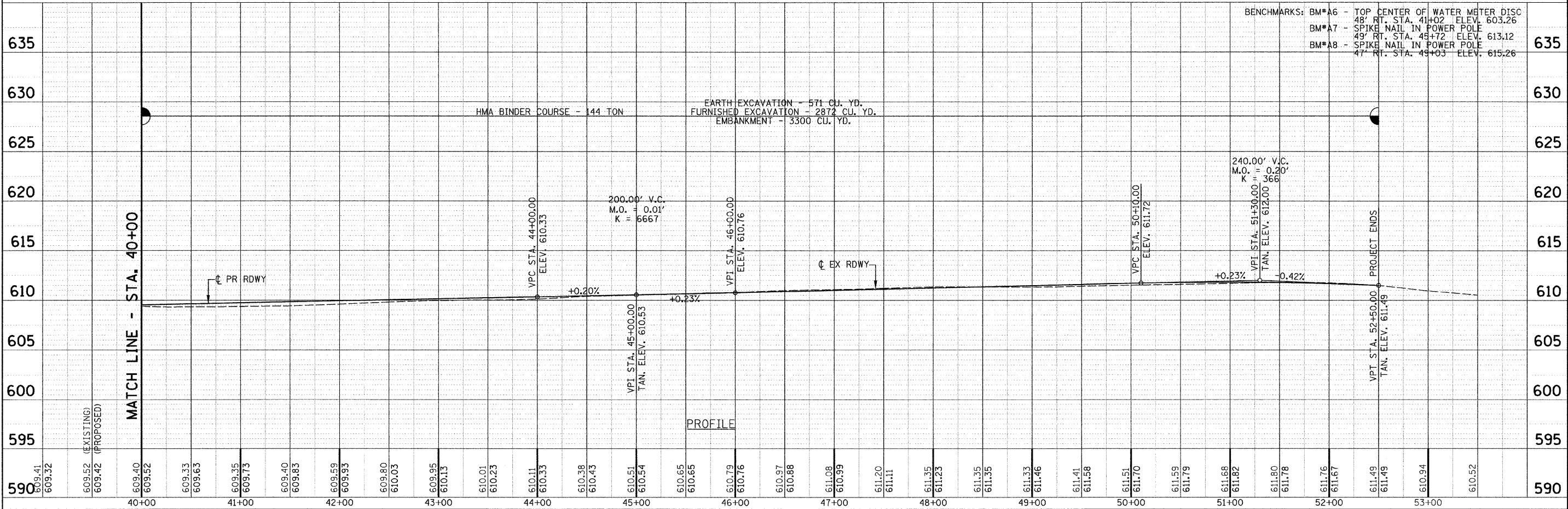


BENCHMARKS:
 BM*A6 - TOP CENTER OF WATER METER DISC
 48' RT. STA. 41+02 ELEV. 603.26
 BM*A7 - SPIKE NAIL IN POWER POLE
 49' RT. STA. 45+72 ELEV. 613.12
 BM*A8 - SPIKE NAIL IN POWER POLE
 47' RT. STA. 49+03 ELEV. 615.26

HMA BINDER COURSE - 144 TON
 EARTH EXCAVATION - 571 CU. YD.
 FURNISHED EXCAVATION - 2872 CU. YD.
 EMBANKMENT - 3300 CU. YD.

200.00' V.C.
 M.O. = 0.01'
 K = 6667

240.00' V.C.
 M.O. = 0.20'
 K = 366



PROFILE

DATE	BY

DATE	BY

FILE NAME =	USER NAME = #USER#	DESIGNED -	REVISED -	<p>Allen Henderson & Associates, Inc. Civil and Structural Engineers Springfield, IL 62703 Phone: (217)544-8033 IL Design Firm No. 184-001907</p>	<p>PLAN & PROFILE</p>		F.A.S. RTE.	SECTION	COUNTY	TOTAL SHEETS	SHEET NO.		
#PT. EL.#	PLOT SCALE = #SCALE#	CHECKED -	REVISED -		SCALE: 1" = 50'	SHEET NO.	OF	SHEETS	STA. 13+55.00 TO STA. 52+50.00	FED. ROAD DIST. NO.	ILLINOIS FED. AID PROJECT	52	16
	PLOT DATE = #DATE#	DRAWN -	REVISED -										
		CHECKED -	REVISED -										

CONTRACT NO. 93558