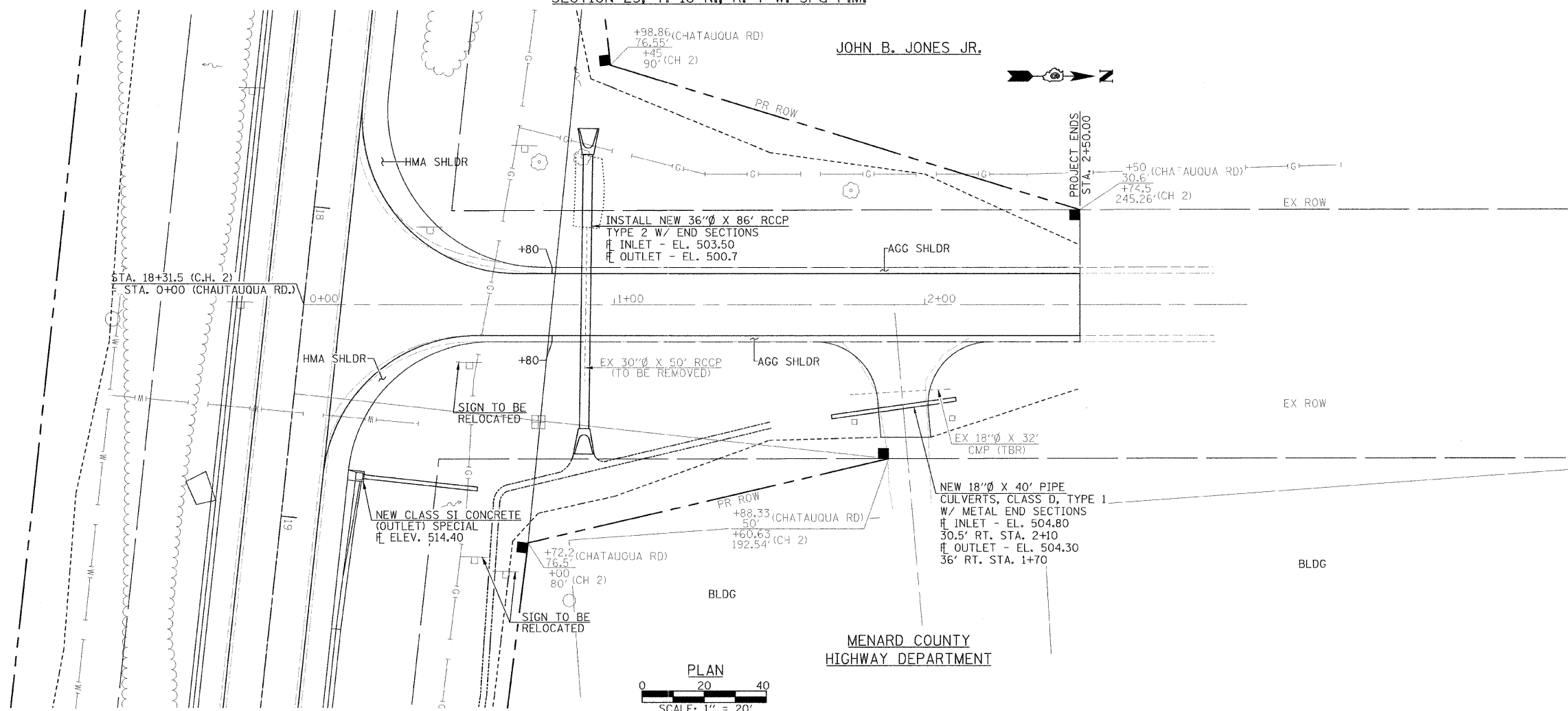
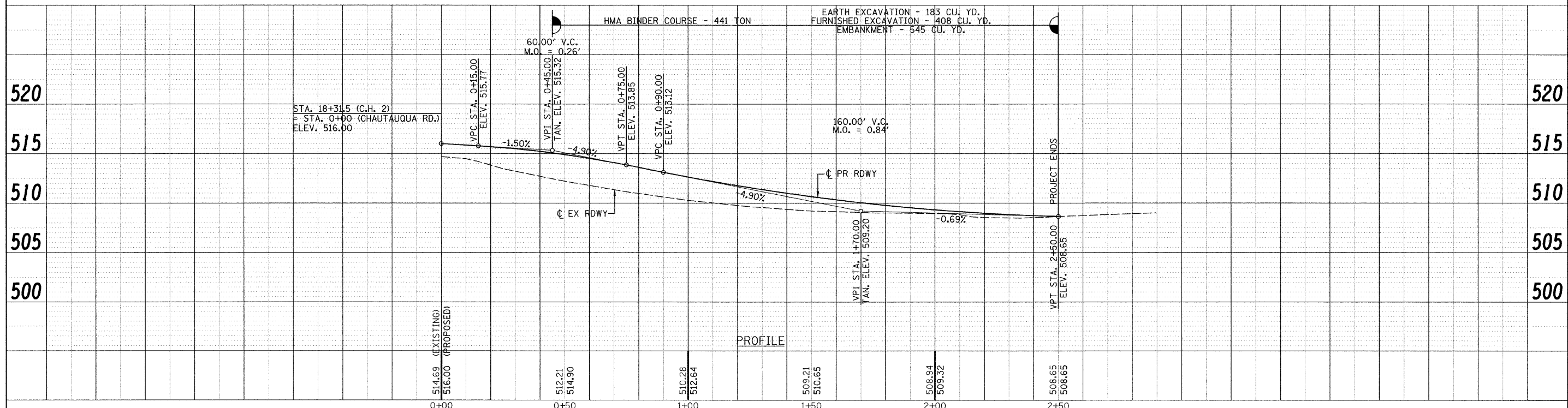
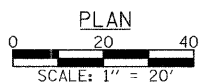


SECTION 25, T. 18 N., R. 7 W. 3rd P.M.

JOHN B. JONES JR.



MENARD COUNTY  
HIGHWAY DEPARTMENT



PLAN	SURVEYED	BY	DATE
NOTE BOOK NO.	ALIGNMENT CHECKED		
	BY		
	NO. OF DAYS		
	CHECKED		
	FILE NAME		

PROFILE	SURVEYED	BY	DATE
NOTE BOOK NO.	GRADES CHECKED		
	BY		
	NO. OF DAYS		
	CHECKED		
	PROFILE NOTATIONS		

FILE NAME = #FILEL#	USER NAME = #USER#	DESIGNED -	REVISIONS -	Allen Henderson & Associates, Inc. Civil and Structural Engineers Springfield, IL 62703 Phone: (217)544-8033 IL Design Firm No. 184-001907	PLAN & PROFILE - CHAUTAUQUA ROAD			F.A.S. RTE.	SECTION	COUNTY	TOTAL SHEETS	SHEET NO.	
	PLOT SCALE = #SCALE#	CHECKED -	REVISIONS -		SCALE: 1" = 20'	SHEET NO.	OF	SHEETS	574	08-00056-03-PV	MENARD	52	17
	PLOT DATE = #DATE#	DRAWN -	REVISIONS -		STA. 0+00.00 TO STA. 2+50.00				CONTRACT NO. 93558				
		CHECKED -	REVISIONS -		FED. ROAD DIST. NO.	ILLINOIS FED. AID PROJECT							