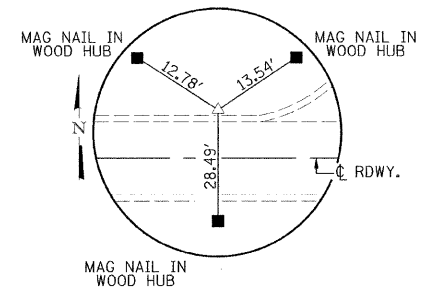
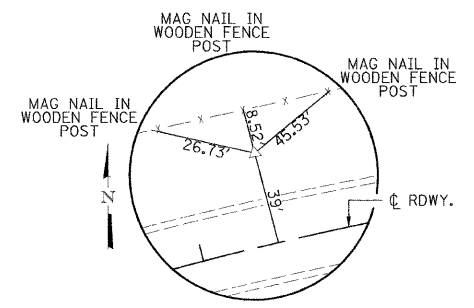


BENCHMARKS

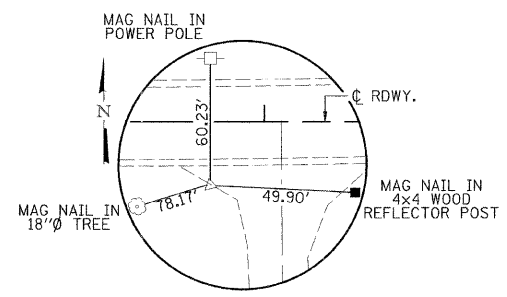
- BM#A1 - MAG NAIL IN WOOD GUARDRAIL POST
19' LT. STA. 16+11 ELEV. 515.46
- BM#A2 - SPIKE NAIL IN WOOD FENCE POST
70' RT. STA. 21+75 ELEV. 526.82
- BM#A3 - SPIKE NAIL IN POWER POLE
47' LT. STA. 26+44 ELEV. 568.69
- BM#A4 - SPIKE NAIL IN WOOD FENCE POST
44' LT. STA. 29+67 ELEV. 592.38
- BM#A5 - SPIKE NAIL IN POWER POLE
40' LT. STA. 34+35 ELEV. 609.72
- BM#A6 - TOP OF CENTER OF WATER METER DISC
48' RT. STA. 41+02 ELEV. 603.26
- BM#A7 - SPIKE NAIL IN POWER POLE
49' RT. STA. 45+72 ELEV. 613.12
- BM#A8 - SPIKE NAIL IN POWER POLE
47' RT. STA. 49+03 ELEV. 615.26



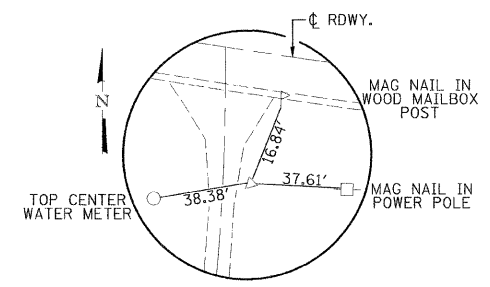
TIE #1
 1/2" Ø IRON PIN
 STA. 17+63
 N. 1207649.26
 E. 2390159.82
 EL. 513.51
 N. 1207635.82
 E. 2390158.62 @



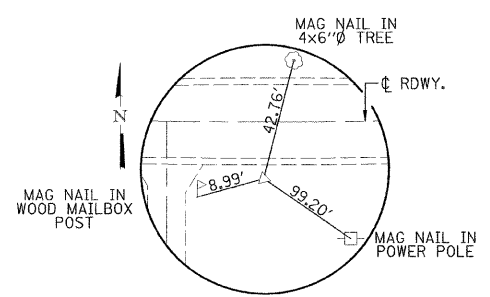
TIE #2
 1/2" Ø IRON PIN
 STA. 29+12
 N. 1207530.70
 E. 2391310.47
 EL. 587.8
 N. 1207492.09
 E. 2391297.26 @



TIE #3
 1/2" Ø IRON PIN
 STA. 36+82
 N. 1207068.10
 E. 2391936.22
 EL. 608.79
 N. 1207081.94
 E. 2391944.80 @



TIE #4
 1/2" Ø IRON PIN
 STA. 43+92
 N. 1206783.13
 E. 2392589.55
 EL. 609.71
 N. 1206824.73
 E. 2392536.26 @



TIE #5
 1/2" Ø IRON PIN
 STA. 52+24
 N. 1206802.03
 E. 2373427.52
 EL. 611.49
 N. 1206816.00
 E. 2393427.14 @

FILE NAME =	USER NAME = #USER#	DESIGNED -	REVISED -	Allen Henderson & Associates, Inc. Civil and Structural Engineers Springfield, IL. 62703 Phone: (217)544-8033 IL Design Firm No. 184-001907	CONTROL POINTS & BENCHMARKS			F.A.S. RTE.	SECTION	COUNTY	TOTAL SHEETS	SHEET NO.
#FILE#		DRAWN -	REVISED -		SCALE: 1" = 3'	574	08-00056-03-PV	MENARD	52	19		
		CHECKED -	REVISED -			CONTRACT NO. 93558						
		DATE -	REVISED -			FED. ROAD DIST. NO. ILLINOIS FED. AID PROJECT						