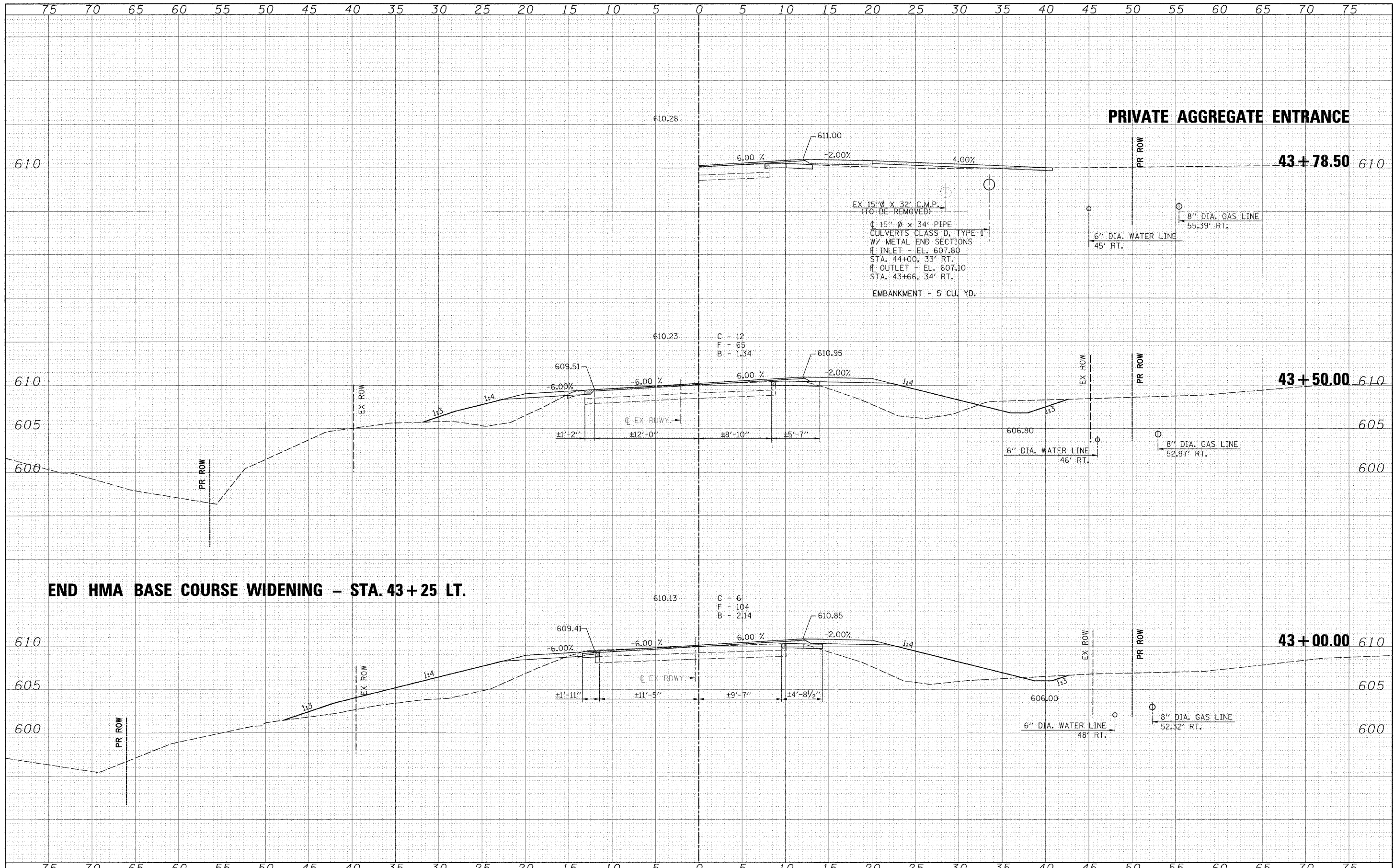


DATE \_\_\_\_\_ BY \_\_\_\_\_  
 SURVEYED \_\_\_\_\_ PLOTTED \_\_\_\_\_  
 FINAL SURVEY \_\_\_\_\_ NOTE BOOK \_\_\_\_\_  
 NO. \_\_\_\_\_ AREAS CHECKED \_\_\_\_\_

DATE \_\_\_\_\_ BY \_\_\_\_\_  
 SURVEYED \_\_\_\_\_ PLOTTED \_\_\_\_\_  
 ORIGINAL SURVEY \_\_\_\_\_ NOTE BOOK \_\_\_\_\_  
 NO. \_\_\_\_\_ AREAS CHECKED \_\_\_\_\_



**END HMA BASE COURSE WIDENING - STA. 43+25 LT.**

**PRIVATE AGGREGATE ENTRANCE**

FILE NAME = \_\_\_\_\_  
 #FILE# \_\_\_\_\_

USER NAME = #USER#  
 DESIGNED - \_\_\_\_\_  
 DRAWN - \_\_\_\_\_  
 CHECKED - \_\_\_\_\_  
 DATE - \_\_\_\_\_

DESIGNED - \_\_\_\_\_  
 DRAWN - \_\_\_\_\_  
 CHECKED - \_\_\_\_\_  
 DATE - \_\_\_\_\_

REVISED - \_\_\_\_\_  
 REVISED - \_\_\_\_\_  
 REVISED - \_\_\_\_\_  
 REVISED - \_\_\_\_\_



**Allen Henderson & Associates, Inc.**  
 Civil and Structural Engineers Springfield, IL  
 62703 Phone: (217)544-8033 IL Design Firm  
 No. 184-001907

**CROSS SECTIONS**  
 SCALE: 1" = 5'  
 SHEET NO. \_\_\_ OF \_\_\_ SHEETS  
 STA. 43+00.00 TO STA. 43+78.68

F.A.S. RTE. 574	SECTION 08-00056-03-PV	COUNTY MENARD	TOTAL SHEETS 52	SHEET NO. 43
CONTRACT NO. 93558				
FED. ROAD DIST. NO. - ILLINOIS FED. AID PROJECT				