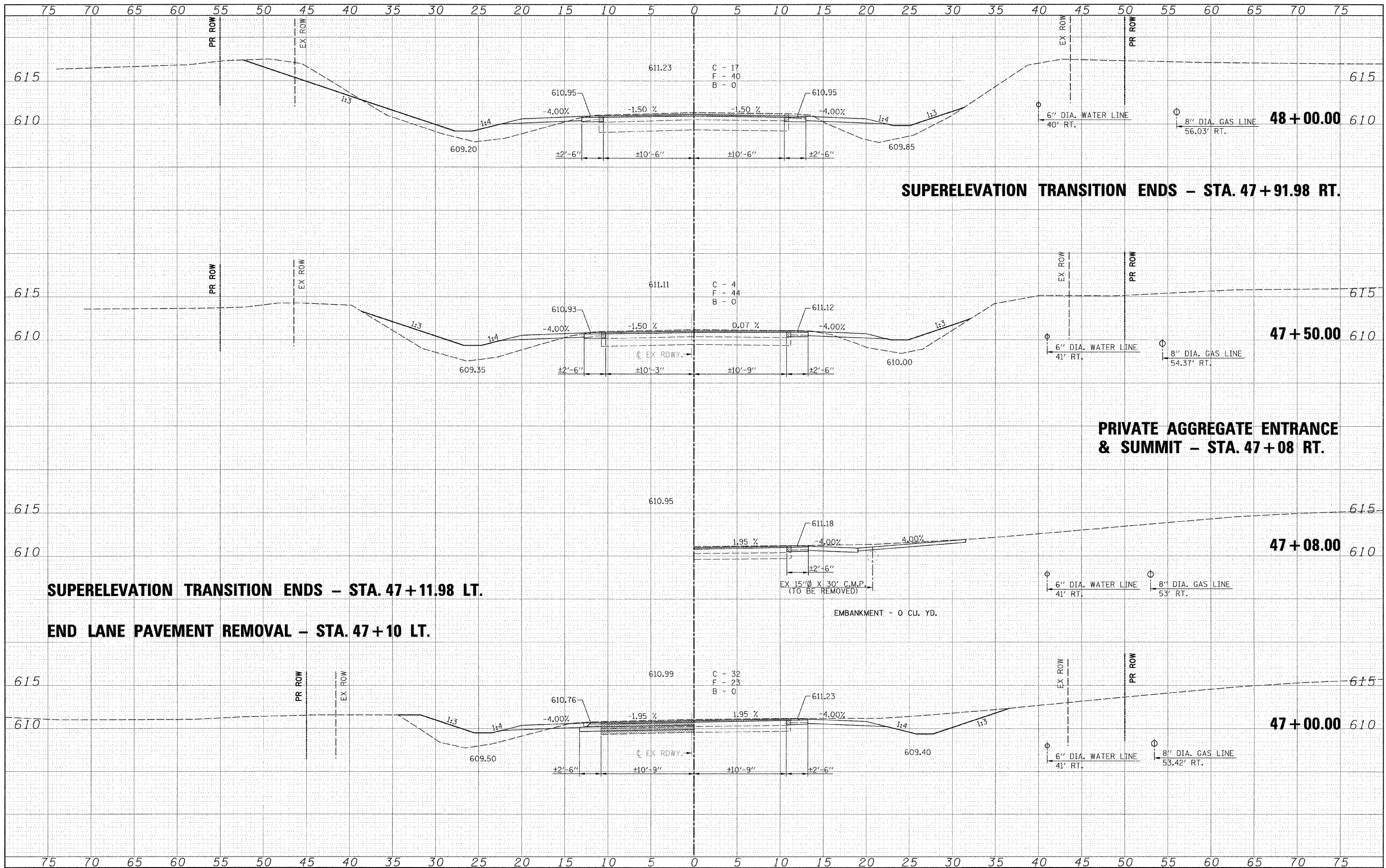


FINAL SURVEY	DATE
BY	
NO. OF SHEETS	
PLotted	
NOTE BOOK	
AREAS CHECKED	
NO.	

ORIGINAL SURVEY	DATE
BY	
NO. OF SHEETS	
PLotted	
NOTE BOOK	
AREAS CHECKED	
NO.	




**SUPERELEVATION TRANSITION ENDS - STA. 47+91.98 RT.**

**PRIVATE AGGREGATE ENTRANCE & SUMMIT - STA. 47+08 RT.**

**SUPERELEVATION TRANSITION ENDS - STA. 47+11.98 LT.**

**END LANE PAVEMENT REMOVAL - STA. 47+10 LT.**

FILE NAME =	USER NAME = #USER#	DESIGNED -	REVISD -	 <b>Allen Henderson &amp; Associates, Inc.</b> Civil and Structural Engineers Springfield, IL 62703 Phone: (217)544-8033 IL Design Firm No. 184-001907	<b>CROSS SECTIONS</b>		F.A.S. RTE. 574	SECTION 08-00056-03-PV	COUNTY MENARD	TOTAL SHEETS 52	SHEET NO. 46
#FILE#	PLOT SCALE = #SCALE#	DRAWN -	REVISD -		SCALE: 1" = 5'	SHEET NO. ___ OF ___ SHEETS	STA. 47+00.00 TC STA. 48+00.00	CONTRACT NO. 93558		ILLINOIS FED. AID PROJECT	
	PLOT DATE = #DATE#	CHECKED -	REVISD -								
		DATE -	REVISD -								