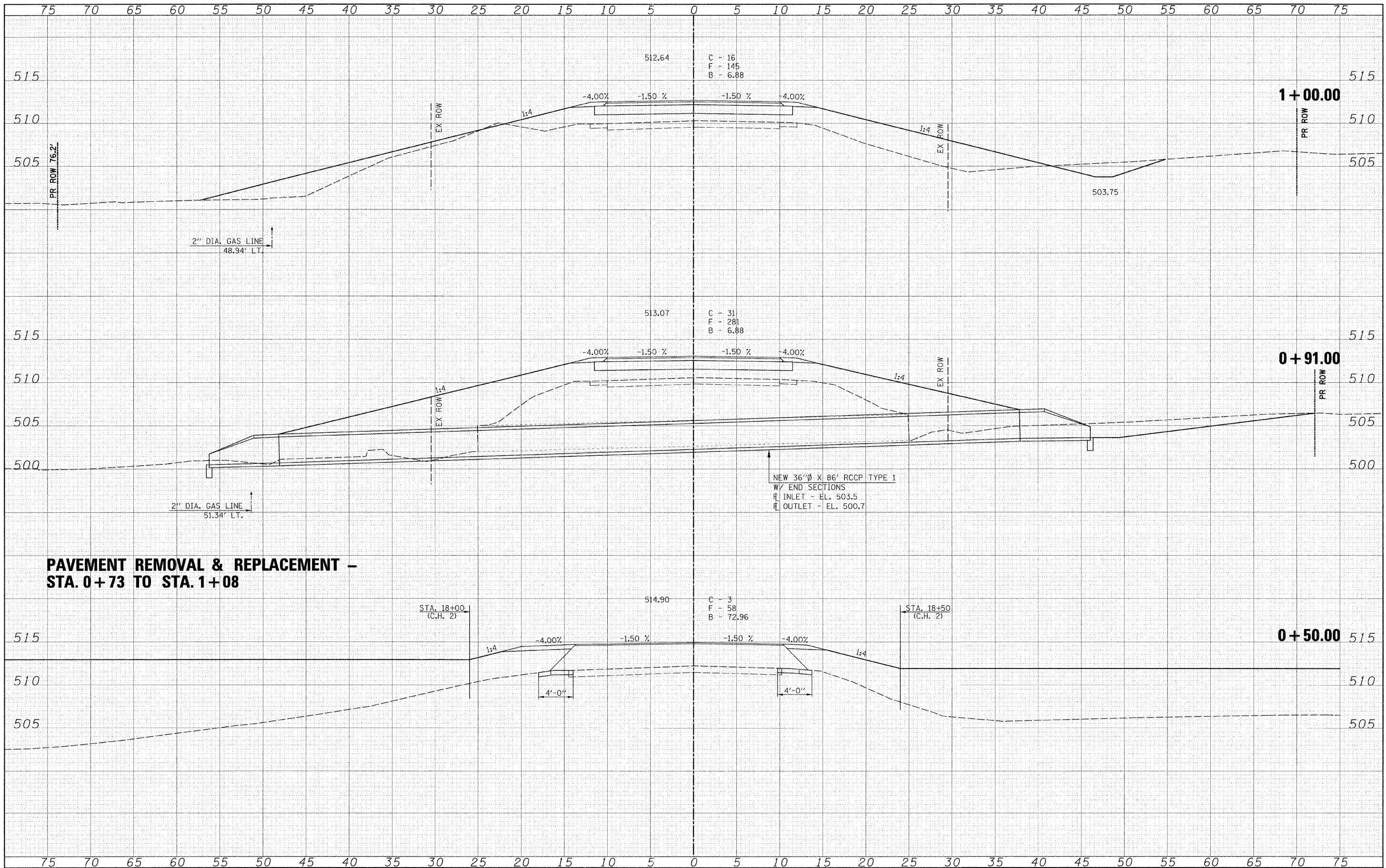


BY	DATE
SURVEYED	
NOTE BOOK	
AREAS CHECKED	

BY	DATE
SURVEYED	
NOTE BOOK	
AREAS CHECKED	



**PAVEMENT REMOVAL & REPLACEMENT -
STA. 0+73 TO STA. 1+08**

FILE NAME =	USER NAME = #USER#
#FILE#	

DESIGNED -	REVISOR -
DRAWN -	REVISOR -
CHECKED -	REVISOR -
DATE -	REVISOR -

PLLOT SCALE = #SCALE#	
PLLOT DATE = #DATE#	

DESIGNED -	REVISOR -
DRAWN -	REVISOR -
CHECKED -	REVISOR -
DATE -	REVISOR -



Allen Henderson & Associates, Inc.
Civil and Structural Engineers Springfield, IL
62703 Phone: (217)544-8033 IL Design Firm
No. 184-001907

CROSS SECTIONS - CHAUTAUQUA ROAD			
SCALE: 1" = 5'	SHEET NO. OF SHEETS	STA. +50.00 TO STA. 1+00.00	

F.A.S. RTE. 574	SECTION 08-00056-03-PV	COUNTY MENARD	TOTAL SHEETS 52	SHEET NO. 51
FED. ROAD DIST. NO. ILLINOIS FED. AID PROJECT				CONTRACT NO. 93558