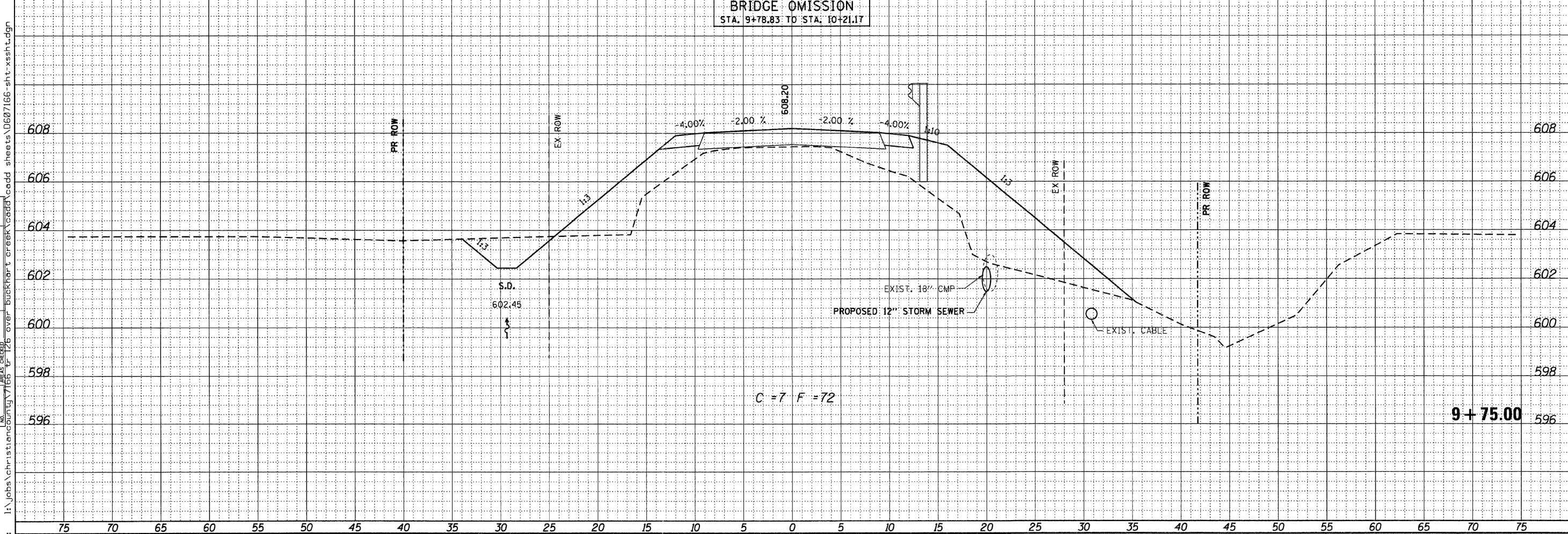
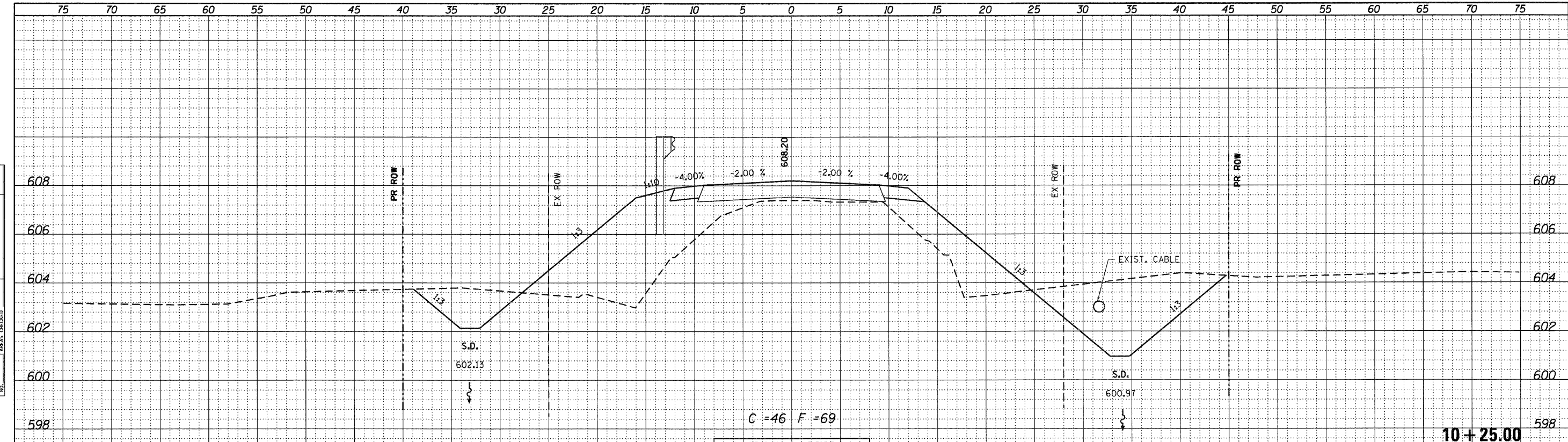


DATE	
BY	
FINAL SURVEY	
NOTED	
AREAS CHECKED	
NO.	

DATE	
BY	
ORIGINAL SURVEY	
NOTED	
AREAS CHECKED	
NO.	



USER NAME = dheberling	DESIGNED - TJZ	REVISED
	DRAWN - DLH	REVISED
	CHECKED - SDS	REVISED
	DATE - 2/22/11	REVISED

**WHKS & co.**  
ENGINEERING

7018 KINGSMILL CT.  
SPRINGFIELD, IL  
(217) 483-9457  
DESIGN FIRM #184001036

**STATE OF ILLINOIS**  
**DEPARTMENT OF TRANSPORTATION**

CROSS SECTIONS			
TR 216 OVER BUCKHART CREEK			
SCALE:	SHEET NO.	OF SHEETS	STA. 9+75.00 TO STA. 10+25.00

TR. RTE.	SECTION	COUNTY	TOTAL SHEETS	SHEET NO.
216	08-16112-00-BR	CHRISTIAN	26	19
CONTRACT NO. 93359				
ILLINOIS FED. AID PROJECT				

FILENAME: I:\jobs\christian\county\7166\tr 216 over buckhart creek\cadd\cadd sheets\0607166-sht-xssht.dgn