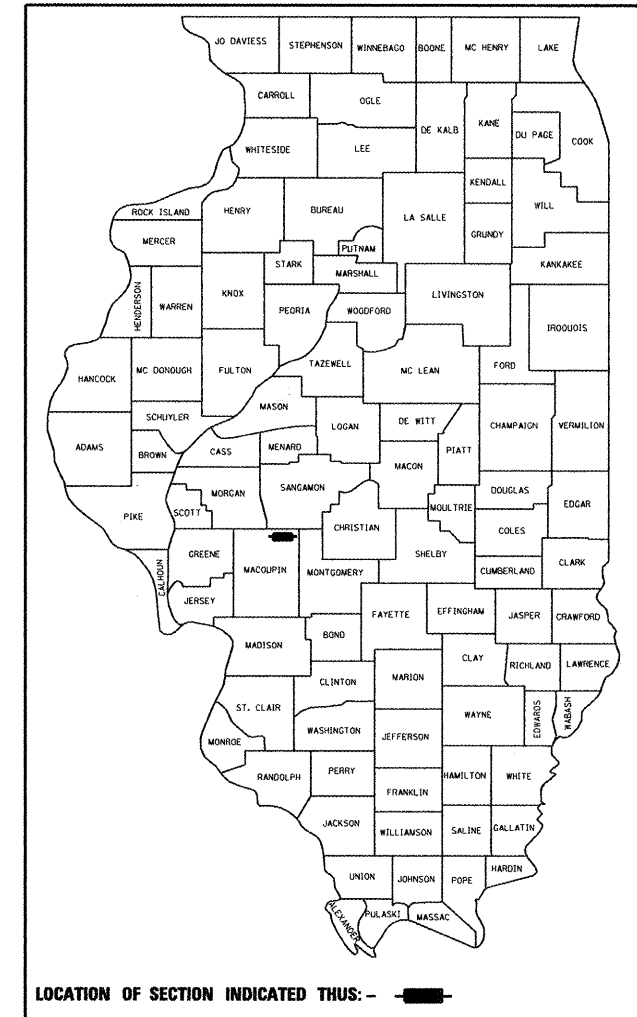


F.A. RTE.	SECTION	COUNTY	TOTAL SHEETS	SHEET NO.
	09-00016-00-SW	MACOUPIN	31	1
FED. ROAD DIST. NO.	ILLINOIS	CONTRACT NO.		

93560



STATE OF ILLINOIS DEPARTMENT OF TRANSPORTATION DIVISION OF HIGHWAYS	
APPROVED	November 21 2011 <i>[Signature]</i> MAYOR - CITY OF VIRDEN
PASSED	December 8 2011 <i>[Signature]</i> DISTRICT 6 ENGINEER OF LOCAL ROADS & STREETS
PASSED	December 8 2011 <i>[Signature]</i> DISTRICT 6 CONSTRUCTION ENGINEER
Releasing For Bid Based on Limited Review	December 8 2011 <i>[Signature]</i> DEPUTY DIRECTOR OF HIGHWAYS, REGION 4 ENGINEER

PRINTED BY THE AUTHORITY OF THE STATE OF ILLINOIS

STATE OF ILLINOIS
DEPARTMENT OF TRANSPORTATION
DIVISION OF HIGHWAYS
SAFE ROUTES TO SCHOOLS PROGRAM
SIDEWALK IMPROVEMENTS
CITY OF VIRDEN
SECTION 09-00016-00-SW
PROJECT - SRTS-4009(047)
MACOUPIN COUNTY

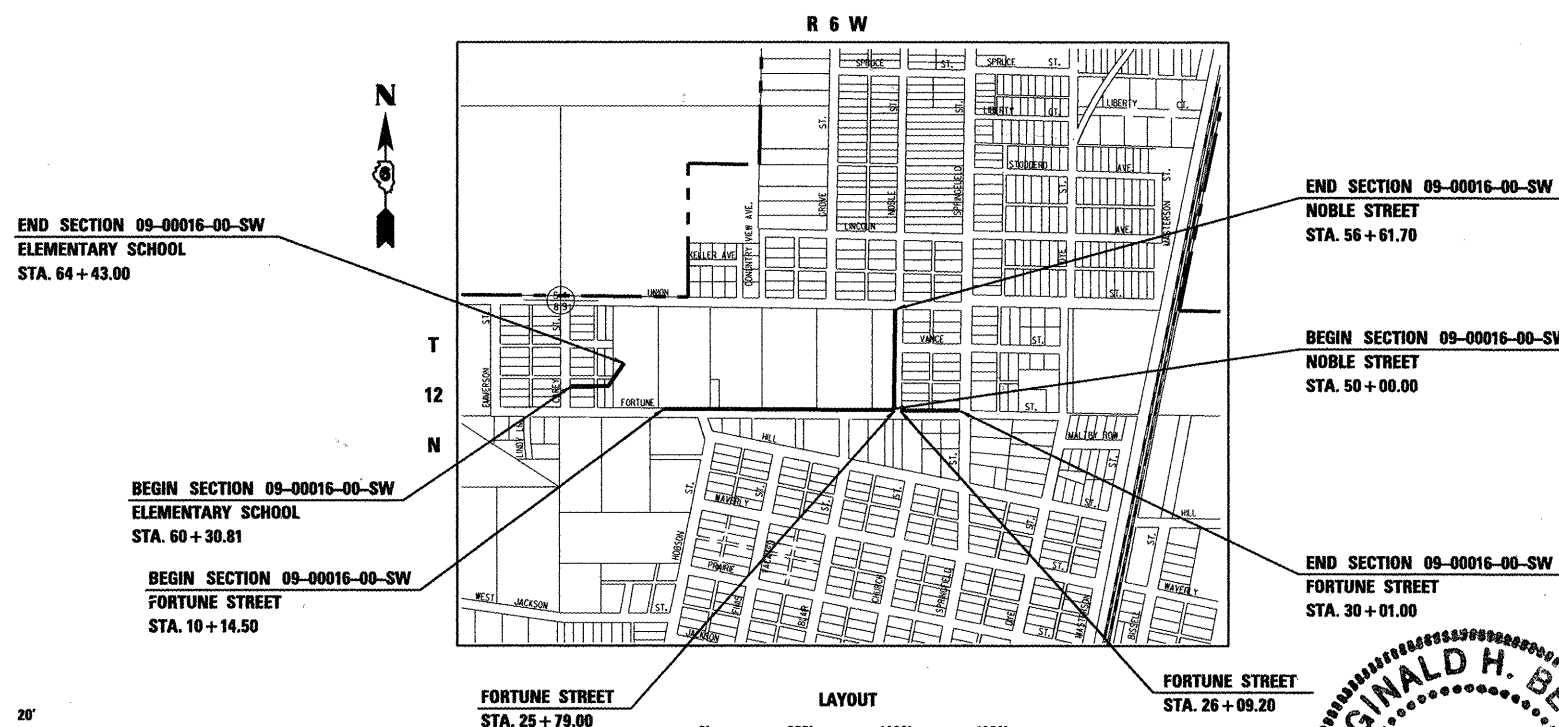
INDEX OF SHEETS

SHEET NO.	ITEM
1	COVER SHEET
2	GENERAL NOTES
3	SUMMARY OF QUANTITIES
4-6	TYPICAL SECTIONS
7	SCHEDULE OF QUANTITIES
8	ALIGNMENT, TIES & BENCHMARKS
9-12	PLAN AND PROFILE FORTUNE STREET
13-14	PLAN AND PROFILE NOBLE STREET
15	PLAN AND PROFILE ELEMENTARY SCHOOL
16-17	SIGNING PLAN
18	CONSTRUCTION DETAILS
19-31	CROSS SECTIONS

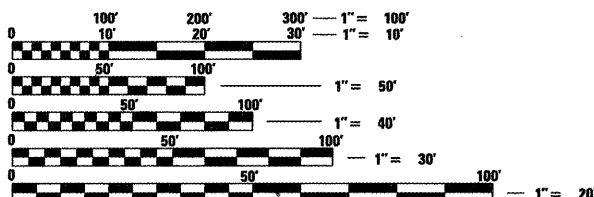
HIGHWAY STANDARDS

- 000001-06 - STANDARD SYMBOLS, ABBREVIATIONS AND PATTERNS
- 280001-06 - TEMPORARY EROSION CONTROL SYSTEMS
- 424001-06 - PERPENDICULAR CURB RAMPS FOR SIDEWALKS
- 701006-03 - OFF-RD OPERATIONS, 2L, 2W, 15" TO 24" FROM PAVEMENT EDGE
- 701011-02 - OFF-RD MOVING OPERATIONS, 2L, 2W, DAY ONLY
- 701801-05 - SIDEWALK, CORNER OR CROSSWALK CLOSURE
- 701901-02 - TRAFFIC CONTROL DEVICES
- 720001-01 - SIGN PANEL MOUNTING DETAILS
- 720006-03 - SIGN PANEL ERECTION DETAILS
- 728001-01 - TELESCOPING STEEL SIGN SUPPORT

C-40-088-09



LENGTH OF IMPROVEMENT (FORTUNE ST.) = 1956.30 FEET = 0.371 MILES
 LENGTH OF IMPROVEMENT (NOBLE ST.) = 661.70 FEET = 0.125 MILES
 LENGTH OF IMPROVEMENT (ELEMENTARY SCHOOL) = 412.19 FEET = 0.078 MILES
 NET LENGTH OF IMPROVEMENT = 3030.19 FEET = 0.574 MILES



FULL SIZE PLANS HAVE BEEN PREPARED USING STANDARD ENGINEERING SCALES. REDUCED SIZED PLANS WILL NOT CONFORM TO STANDARD SCALES. IN MAKING MEASUREMENTS ON REDUCED PLANS, THE ABOVE SCALES MAY BE USED.

J.U.L.I.E.
 JOINT UTILITY LOCATION INFORMATION FOR EXCAVATION
 1-800-892-0123
 OR 811



BY *[Signature]*
 DATE 11/22/2011

BENTON & ASSOCIATES, INC.
 1970 W. Lafayette Ave., Jacksonville IL 62650
 (217) 245-4146 (217) 245-4149 Fax
 Kirksville Missouri
 Macomb Illinois

CONTRACT NO. 93560