

F.A.S. RTE.	SECTION	COUNTY	TOTAL SHEETS	SHEET NO.
733	06-00088-00-BR	MACOUPIN	35	12
FED. ROAD DIST. NO.		ILLINOIS FED. AID PROJECT		
		CONTRACT NO.		

WEST EDGE OF APPROACH

Location	Station	Offset	Theoretical Grade Elevations
Bk. N. Abut.	96+68.00	-18.000	592.96
A3	96+78.00	-18.000	593.01
A4	96+88.00	-18.000	593.06
End N. Appr. Pav't.	96+98.00	-18.000	593.13

WEST EDGE OF PAVEMENT

Location	Station	Offset	Theoretical Grade Elevations
Bk. N. Abut.	96+68.00	-11.000	593.07
A3	96+78.00	-11.000	593.12
A4	96+88.00	-11.000	593.17
End N. Appr. Pav't.	96+98.00	-11.000	593.24

☉ ROADWAY & P.G.

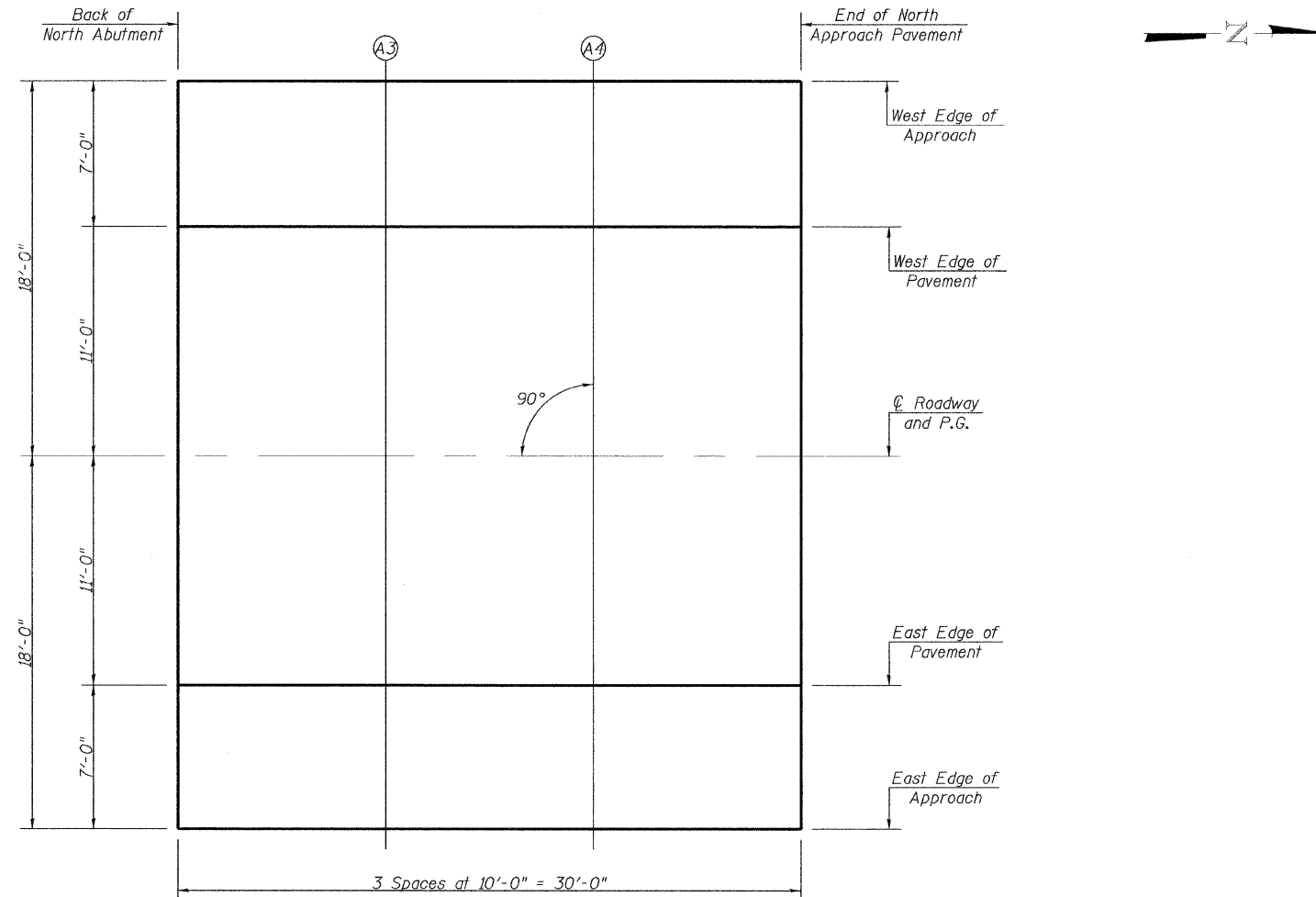
Location	Station	Offset	Theoretical Grade Elevations
Bk. N. Abut.	96+68.00	0.000	593.23
A3	96+78.00	0.000	593.28
A4	96+88.00	0.000	593.33
End N. Appr. Pav't.	96+98.00	0.000	593.40

EAST EDGE OF PAVEMENT


Location	Station	Offset	Theoretical Grade Elevations
Bk. N. Abut.	96+68.00	11.000	593.07
A3	96+78.00	11.000	593.12
A4	96+88.00	11.000	593.17
End N. Appr. Pav't.	96+98.00	11.000	593.24

EAST EDGE OF APPROACH

Location	Station	Offset	Theoretical Grade Elevations
Bk. N. Abut.	96+68.00	18.000	592.96
A3	96+78.00	18.000	593.01
A4	96+88.00	18.000	593.06
End N. Appr. Pav't.	96+98.00	18.000	593.13



PLAN

FILE NAME =	USER NAME = #USER#	DESIGNED -	REVISED -	 Allen Henderson & Associates, Inc. Civil and Structural Engineers Springfield, IL 62703 Phone: (217)544-8033 IL Design Firm No. 184-001907	TOP OF APPROACH SLAB ELEVATIONS		F.A.S. RTE.	SECTION	COUNTY	TOTAL SHEETS	SHEET NO.	
#FILE#		DRAWN -	REVISED -		SCALE: NONE	STA.	TO STA.	733	06-00088-00-BR	MACOUPIN	35	12
		CHECKED -	REVISED -					CONTRACT NO. 93562				
		DATE -	REVISED -					FED. ROAD DIST. NO. ILLINOIS FED. AID PROJECT				