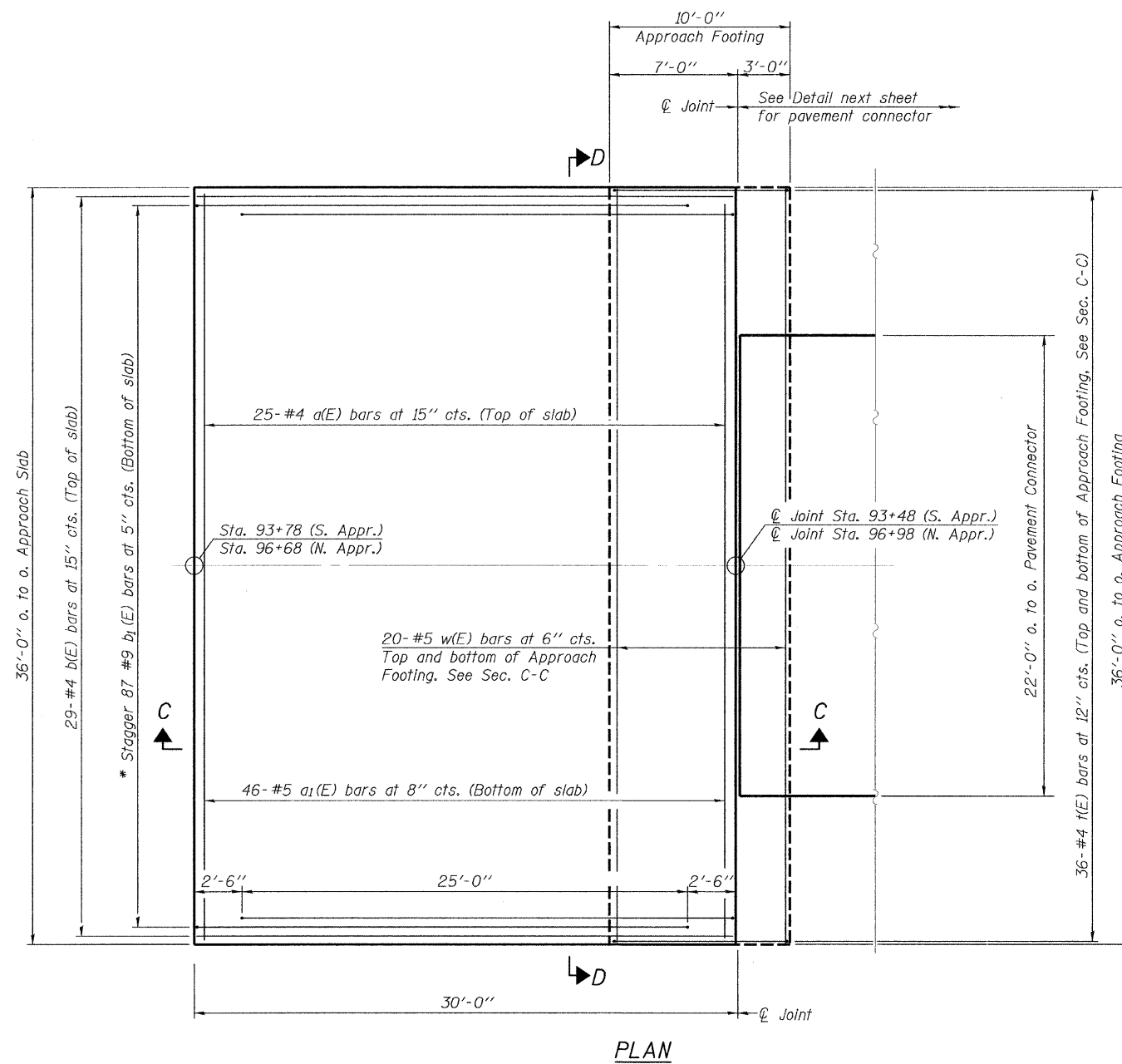
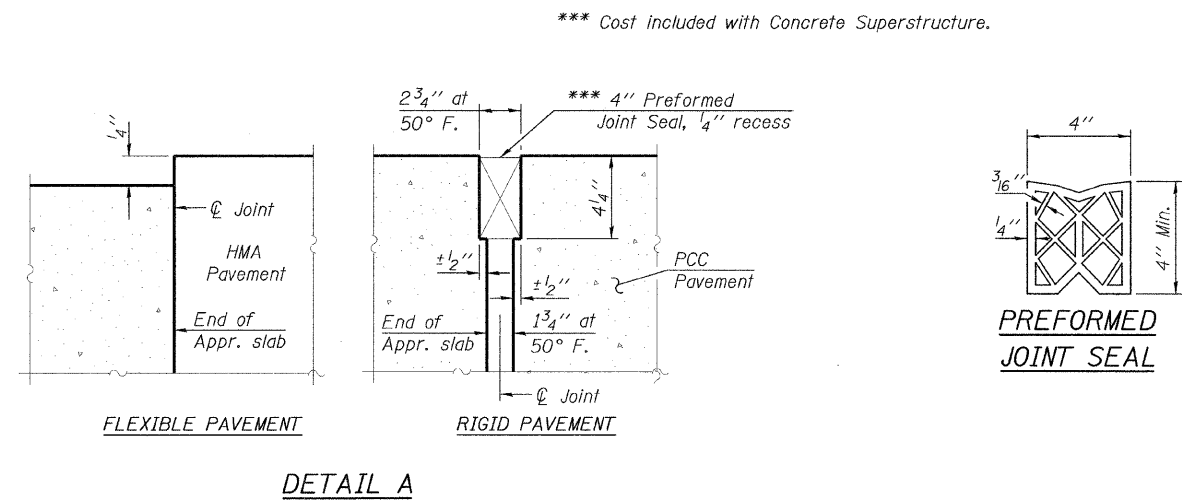


F.A.S. RTE.	SECTION	COUNTY	TOTAL SHEETS	SHEET NO.
733	06-00088-00-BR	MACOUPIN	35	25
FED. ROAD DIST. NO.		ILLINOIS FED. AID PROJECT		
		CONTRACT NO.		

Notes:
 Work this sheet with 26 of 35.
 See sheet 26 of 35 for Sections C-C & D-D.
 a(E), a₁(E), and w(E) bar spacings measured perpendicular to ϕ Rdwy.



* Tilt #9 b₁(E) bars as required to maintain clearance.



*** Cost included with Concrete Superstructure.

DETAIL A

BRIDGE APPROACH SLAB DETAILS

FILE NAME =	USER NAME = #USER#	DESIGNED -	REVISED -	<p>Allen Henderson & Associates, Inc. Civil and Structural Engineers Springfield, IL. 62703 Phone: (217)544-8033 IL Design Firm No. 184-001907</p>	BRIDGE APPROACH SLAB DETAILS		F.A.S. RTE.	SECTION	COUNTY	TOTAL SHEETS	SHEET NO.	
#FILE#		DRAWN -	REVISED -		SCALE:	STA.	TO STA.	733	06-00088-00-BR	MACOUPIN	35	25
	PLOT SCALE = #SCALE#	CHECKED -	REVISED -					CONTRACT NO. 93562				
	PLOT DATE = #DATE#	DATE -	REVISED -					FED. ROAD DIST. NO. ILLINOIS FED. AID PROJECT				