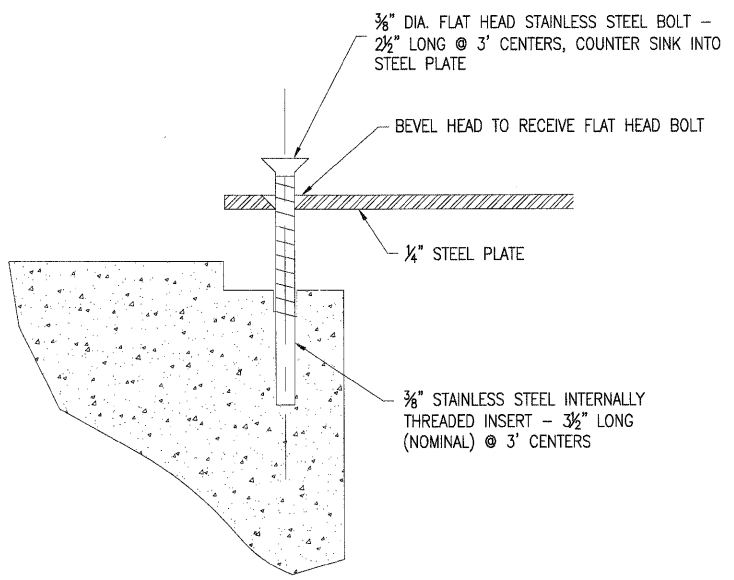
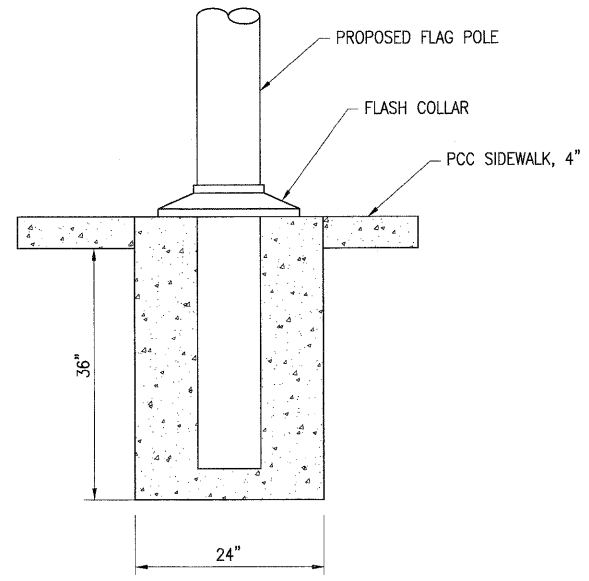


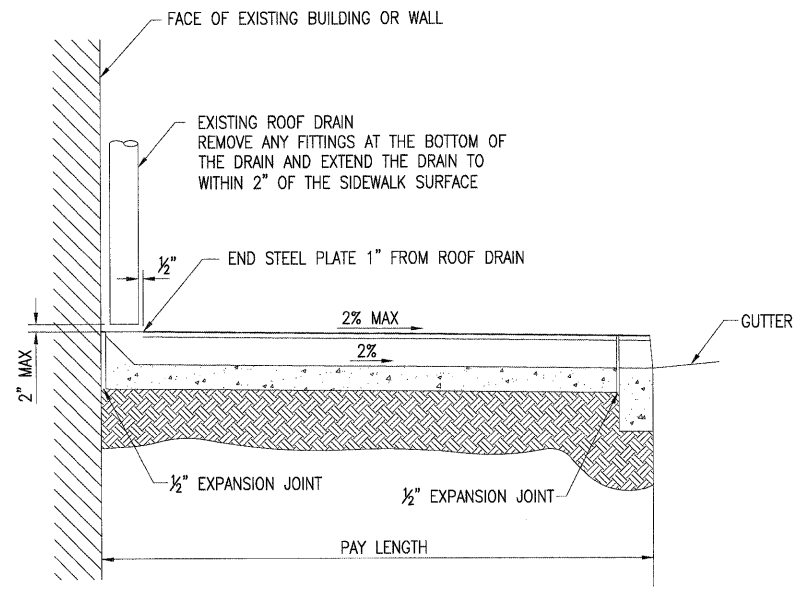
TYPICAL ROOF DRAIN CHANNEL & COVER
(NOT TO SCALE)



EMBED STAINLESS STEEL INTERNALLY THREADED INSERT WITH A CAPSULE OR ADHESIVE CARTRIDGE TYPE EPOXY SYSTEM. THE CONTRACTOR SHALL INSTALL THESE INSERTS IN PRE-DRILLED HOLES ACCORDING TO THE MANUFACTURER'S RECOMMENDATIONS AND PROCEDURES. THE CAPSULE OR THE ADHESIVE CARTRIDGE SHALL BE SEALED WITH PREMEASURED AMOUNTS OF THE ADHESIVE CHEMICAL.

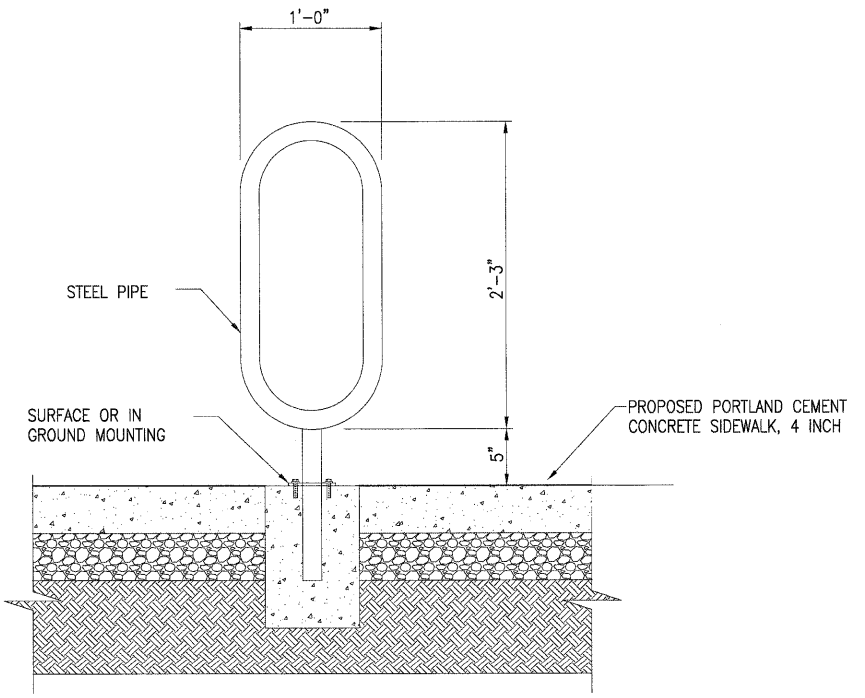


FLAGPOLE FOOTING BASE DETAIL



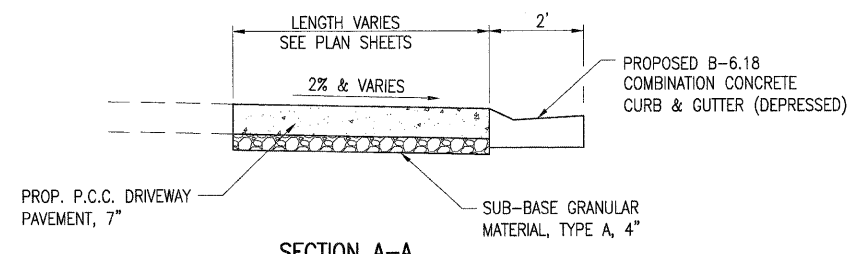
TYPICAL ROOF DRAIN CHANNEL & COVER
(NOT TO SCALE)

DETAIL 'A'
(NOT TO SCALE)

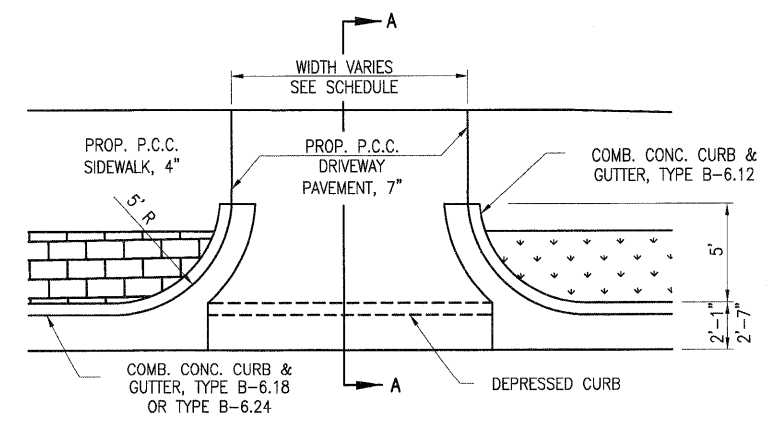


BIKE RACK

SEE SPECIFICATIONS - PLACE WITH OVAL HITCH PARALLEL TO STREET



SECTION A-A



TYPICAL COMMERCIAL AND PRIVATE DRIVEWAY ENTRANCE

NOV 28, 2011 3:25 PM DFORGY I:\JOBS\07L1101 LITCHFIELD STREETScape\07L1101 DETAILS.SHEETS.DWG

Prairie Engineers of Illinois, P.C.
200 S. Chicago St.
Lincoln, IL 62656
(217) 651-8017
www.prairieengineers.com
professional design firm no. 184-005965
© Copyright Prairie Engineers of Illinois, P.C. 2011

DRAWING DATE	11/29/11	REVISION		BY	DATE
DESIGNED BY	DEF				
DRAWN BY	TLW				
CHECKED BY	LDK	10/11			

STATE OF ILLINOIS
DEPARTMENT OF TRANSPORTATION

CITY OF LITCHFIELD - DOWNTOWN STREETScape PHASE 2
DETAILS
STATION TO STATION

PEI PROJECT NO.	07L1101
PAGE	86 OF 92 PAGES
FILENAME	DETAILS_SHEETS.dwg
DRAWING SCALE	

F.A.U. RTE.	SECTION	COUNTY	TOTAL SHEETS	SHEET NO.
	10-00035-00-LS	Montgomery	92	86
CONTRACT NO.			93563	
FED. ROAD DIST. NO.	ILLINOIS	FED. AID PROJECT		