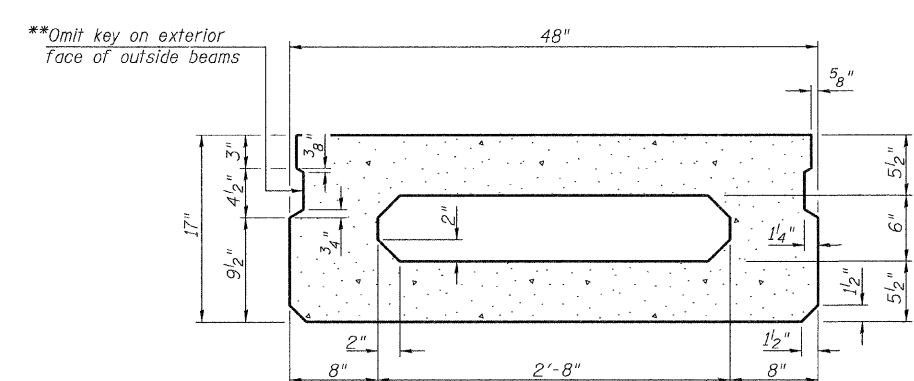
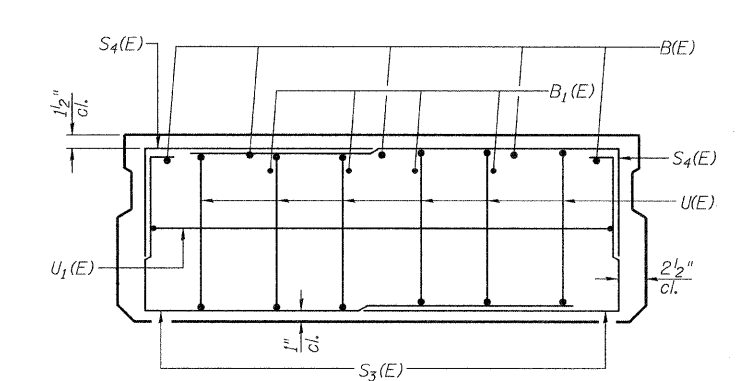


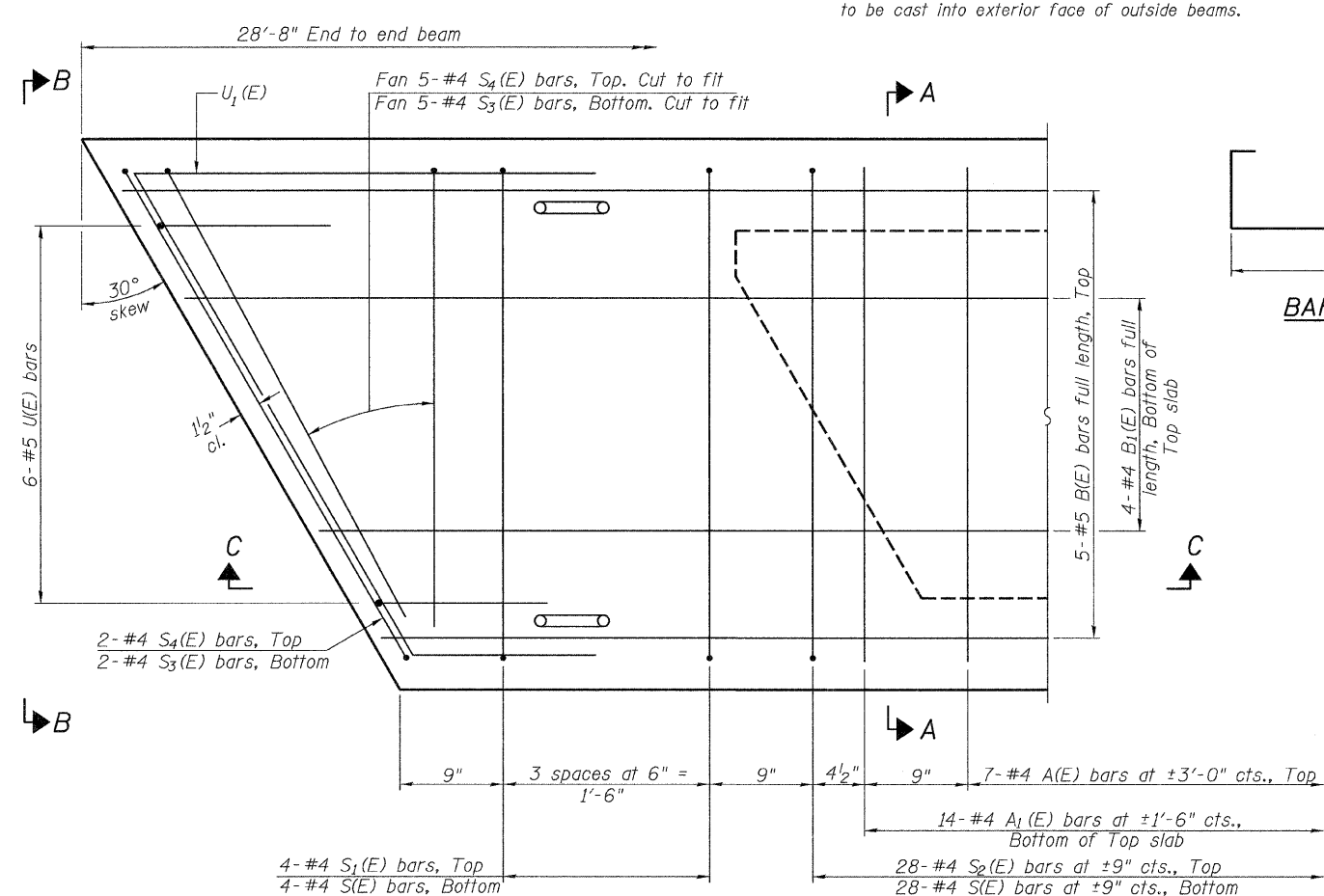
**SECTION C-C**



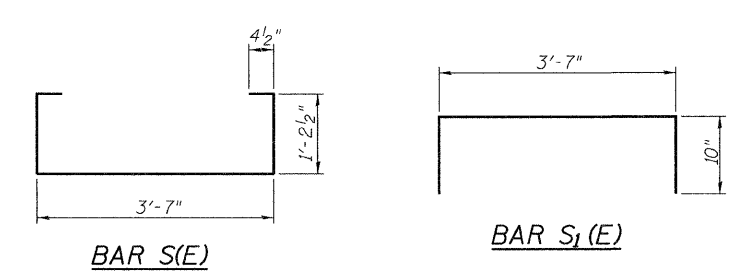
**SECTION A-A**  
(Showing dimensions)



**VIEW B-B**

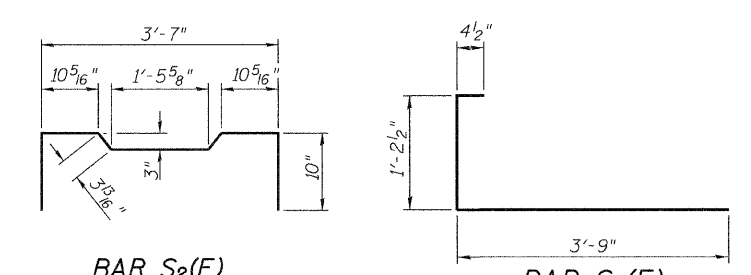


**PLAN VIEW**



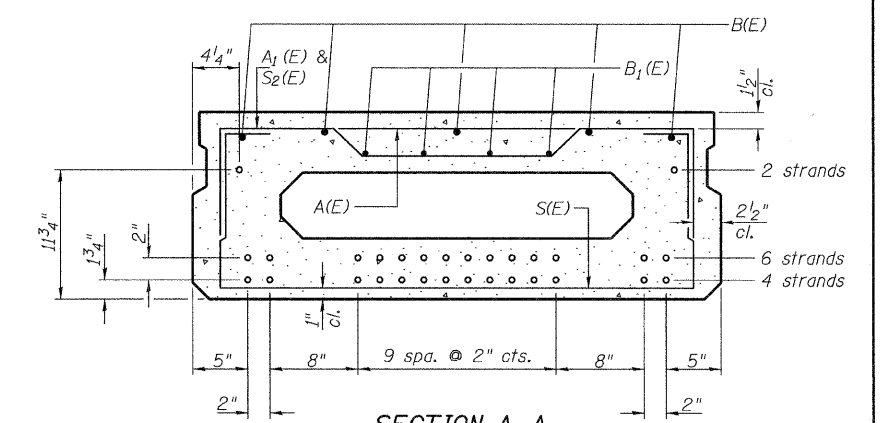
**BAR S(E)**

**BAR S1(E)**



**BAR S2(E)**

**BAR S3(E)**



**SECTION A-A**

12-1/2" Strands Each Strand Stressed to 30,900 Lbs.  
4-Strands 1 3/4" up, 6-Strands 3 3/4" up, 2-Strands 1 3/4" up  
Note: Place the number of strands specified in each row symmetrically about the centerline of beam in the permissible strand locations shown.

**BAR LIST-ONE BEAM ONLY**  
(For information only)

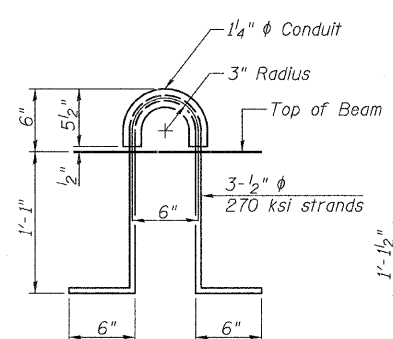
Bar	No.	Size	Length	Shape
A(E)	7	#4	3'-7"	—
A1(E)	14	#4	3'-10"	—
B(E)	5	#5	*28'-5"	—
B1(E)	4	#4	*28'-5"	—
S(E)	36	#4	6'-9"	□
S1(E)	8	#4	5'-3"	□
S2(E)	28	#4	5'-6"	□
S3(E)	14	#4	5'-4"	□
S4(E)	14	#4	4'-7"	□
U(E)	12	#5	3'-8"	□
U1(E)	2	#4	8'-7"	□

\*Total Length, Lap as Necessary.

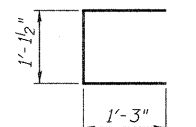
Note: See sheet 2 of 11 for additional details and Bill of Material.

Note: Spacing of S(E) and S2(E) bars may be adjusted up to 4" in the immediate area of the transverse tie diaphragms to miss the block outs for the transverse ties.

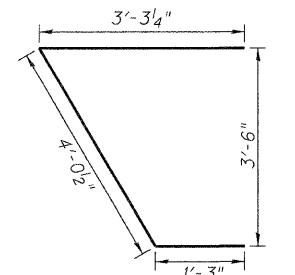
**MINIMUM BAR LAP**  
#4 bar = 2'-0"  
#5 bar = 2'-6"



**LIFTING LOOP DETAIL**



**BAR U(E)**



**BAR U1(E)**

**SUPERSTRUCTURE DETAILS - SPANS 1 & 3**  
**PIKE COUNTY**  
**SECTION 11-00089-00-BR**  
**C.H. 4 OVER NORTH FORK HADLEY CREEK**

SHEET NO. 3 17 SHEETS	ROUTE NO.	SECTION	COUNTY	TOTAL SHEETS	SHEET NO.
	CH 4	11-00089-00-BR	PIKE	28	10
	S.N. 075-3324		CONTRACT NO. 93564		
FED. ROAD DIST. NO. 7		ILLINOIS	FED. AID PROJECT BRS-0596(105)		