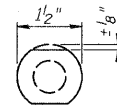
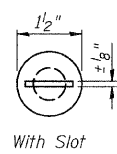
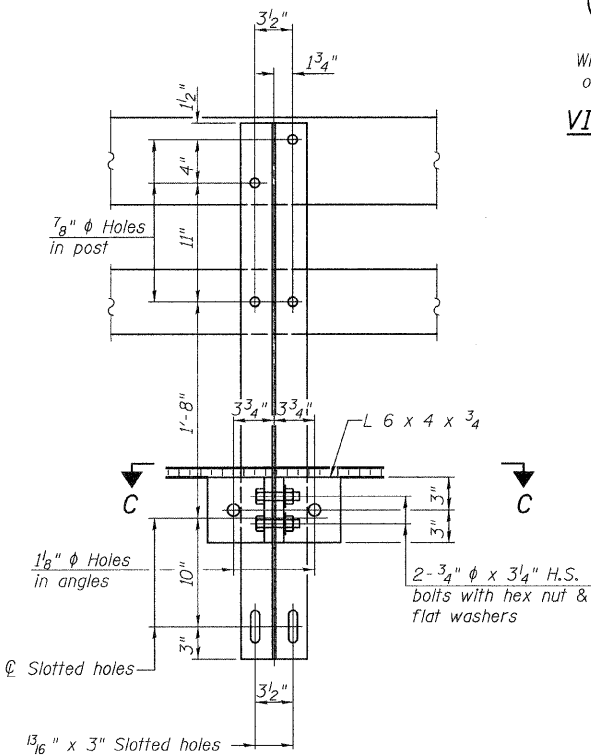


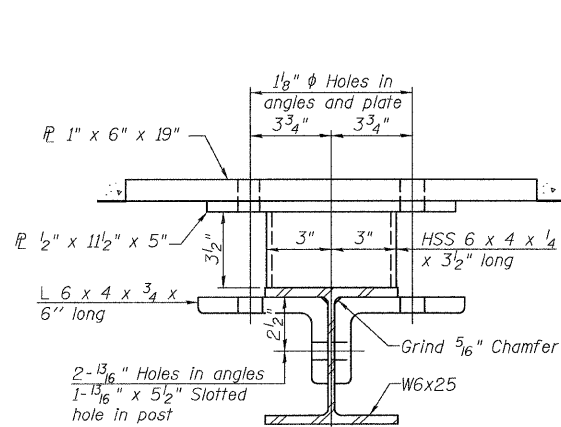
DETAIL OF 3/4"  $\phi$  ROUND HEAD BOLT



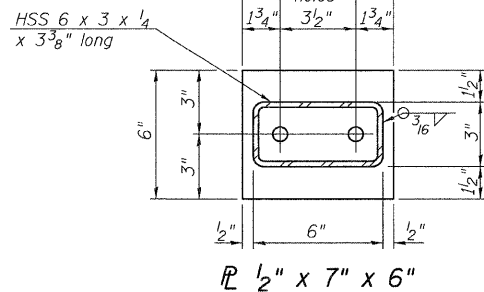
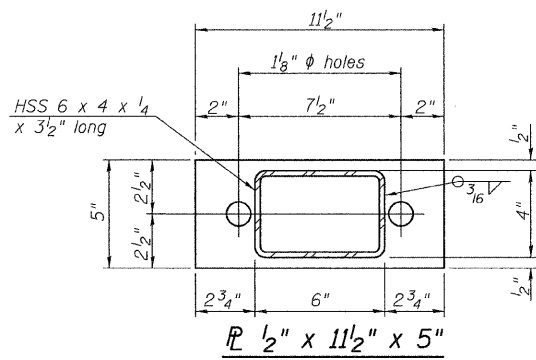
VIEW A-A  
Without Slot or Recess



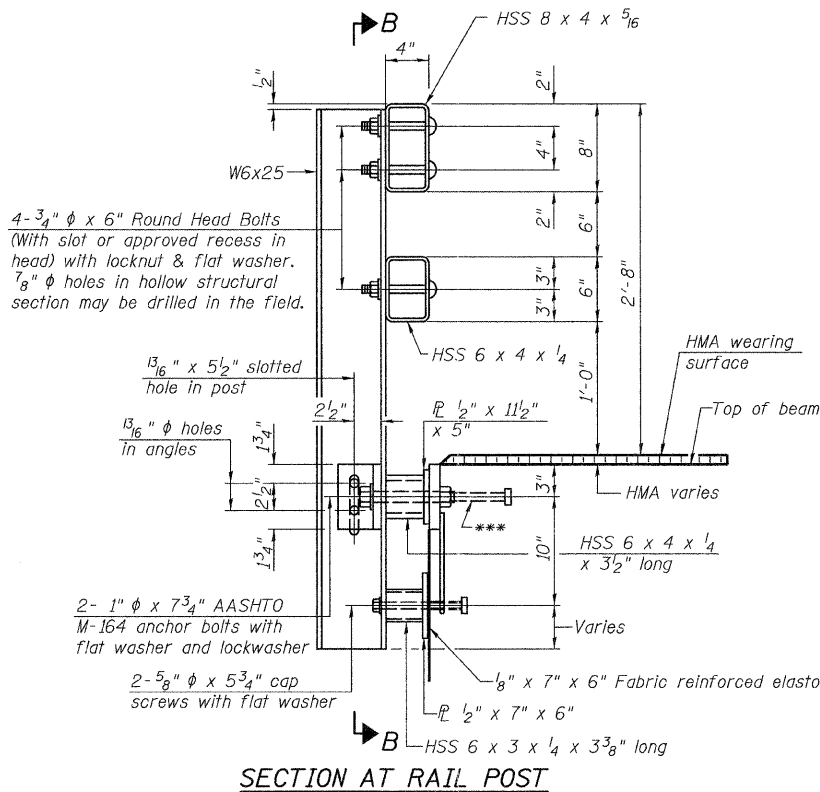
SECTION B-B



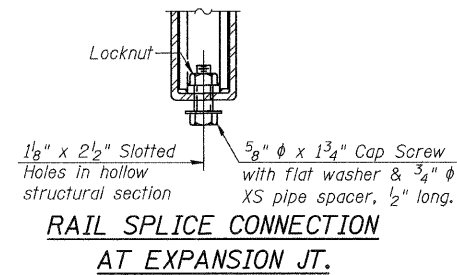
SECTION C-C



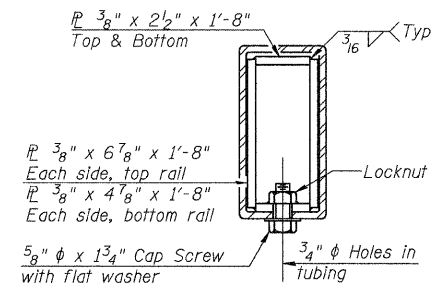
FOR RAIL POST SPACING SEE SH.#8 OF 11



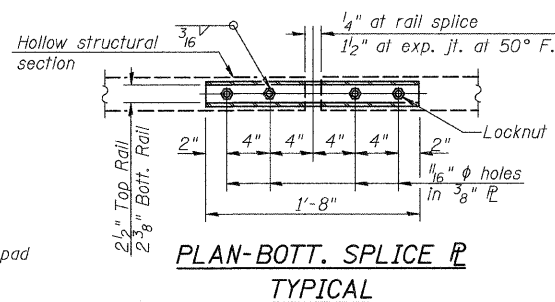
SECTION AT RAIL POST



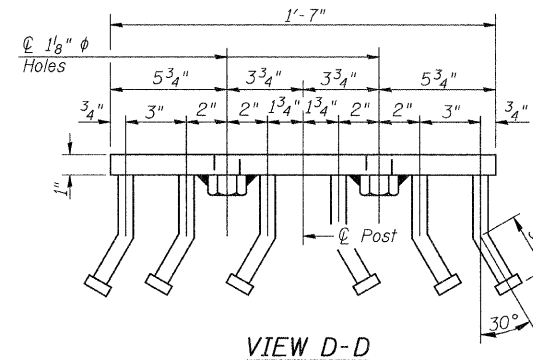
RAIL SPLICE CONNECTION AT EXPANSION JT.



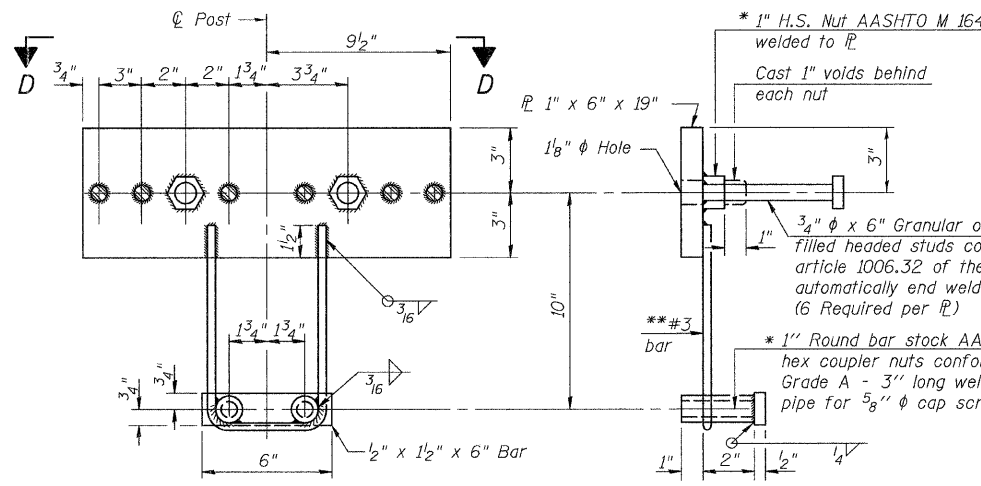
SECTION AT RAIL SPLICE



PLAN-BOTT. SPLICE R TYPICAL



VIEW D-D



ANCHOR DEVICE

Notes:  
All field drilled holes shall be coated with an approved zinc rich paint before erection.  
For multi-span bridges, sufficient 1/4" x 6" x 1'-2" galvanized steel shims shall be provided to align rail between adjacent spans. Cost included with Steel Bridge Rail, Type SM (Special).  
All steel rail members shall be galvanized according to Article 509.05 of the Standard Specifications.  
\*\*\* The studs of the anchor devices shall be placed below the top reinforcement bars and the outermost longitudinal reinforcement bar shall be placed directly above the studs of the rail post anchor device.

BILL OF MATERIAL

Item	Unit	Quantity
Steel Bridge Rail, Type SM (Special)	FOOT	210

STEEL BRIDGE RAIL, TYPE SM (SPECIAL)  
PIKE COUNTY  
SECTION 11-00089-00-BR  
C.H. 4 OVER NORTH FORK HADLEY CREEK

SHEET NO. 6 17 SHEETS	ROUTE NO.	SECTION	COUNTY	TOTAL SHEETS	SHEET NO.
	CH 4	11-00089-00-BR	PIKE	28	13
S.N. 075-3324			CONTRACT NO. 93564		
FED. ROAD DIST. NO. 7		ILLINOIS	FED. AID PROJECT BRS-0596(105)		

(Sheet 1 of 2)