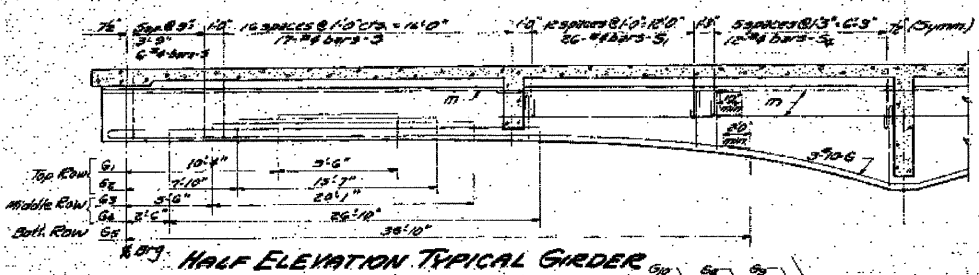
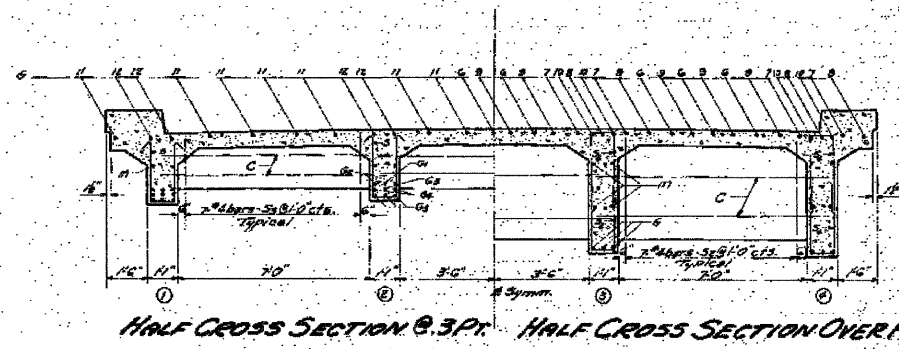


STATE OF ILLINOIS
DEPARTMENT OF PUBLIC WORKS & BUILDINGS
DIVISION OF HIGHWAYS

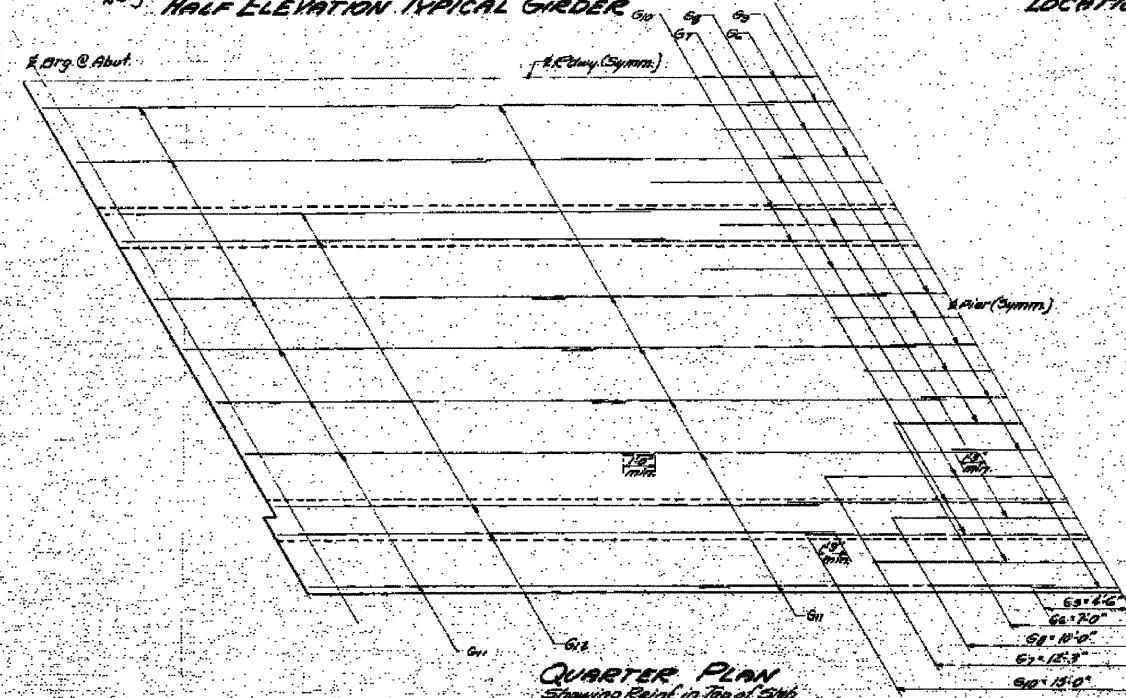
PROJECT NO.	SECTION	COUNTY	TOTAL SHEETS	SHEET NO.
1-596 RT. B	PIKE	14	10	
SHEET NO. 13		TOTAL SHEETS 57-117 (8)		



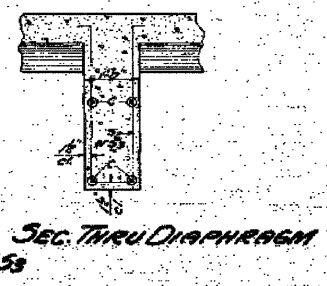
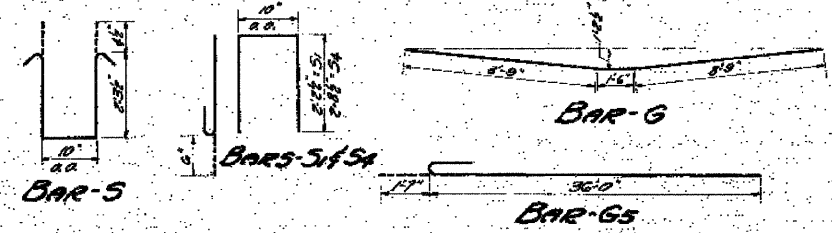
LOCATION OF 'G' BARS



HALF CROSS SECTION @ 3 Pt. HALF CROSS SECTION OVER PIER



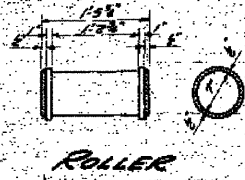
QUARTER PLAN
Showing Reinf. in Top of Girder



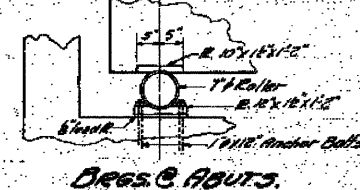
SECTION THRU DIAPHRAGM
Bars S1-S4

BAR LIST

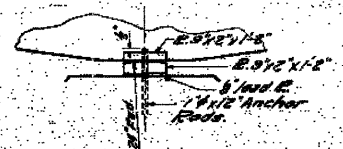
Bar	No.	Size	Length	Shape
G	12	#10	18'-0"	U
G	8	#8	8'-0"	U
G ₁	16	#10	13'-7"	U
G ₂	8	#7	60'-7"	U
G ₃	16	#7	25'-10"	U
G ₄	24	#7	37'-7"	U
G ₅	9	#6	14'-0"	U
G ₆	8	#7	28'-0"	U
G ₇	4	#7	20'-0"	U
G ₈	12	#7	9'-0"	U
G ₉	8	#7	30'-0"	U
G ₁₀	16	#8	24'-0"	U
G ₁₁	16	#8	30'-0"	U
S	184	#4	6'-0"	U
S	228	#4	6'-0"	U
S ₁	21	#4	8'-0"	U
S ₂	45	#4	11'-0"	U
S ₃	96	#4	7'-0"	U
M	48	#4	22'-0"	U
C	36	#4	9'-0"	U
Reinforcement Bars				280 #40
Structural Steel				120 #40



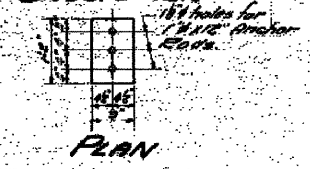
ROLLER



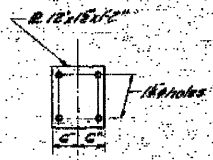
BEARINGS @ ABUTS.



BEARINGS @ PIER



PLAN



PLAN

DESIGNED	Robert R. Weber
CHECKED	Harry P. Buehler
DRAWN	W. J. G. G. G.
CHECKED	H. P. B.

MAR 25 1957
EXAMINED
PASSED
APPROVED

BEARINGS & GIRDER REINF.
F.A.S. RT. 596 SEC. 21 B
PIKE COUNTY
STA. 151+17

EXISTING STRUCTURE PLANS
PIKE COUNTY
SECTION 11-00089-00-BR
C.H. 4 OVER NORTH FORK HADLEY CREEK

SHEET NO. 13 17 SHEETS	ROUTE NO.	SECTION	COUNTY	TOTAL SHEETS	SHEET NO.
	CH 4	11-00089-00-BR	PIKE	28	20
	S.N. 075-3324		CONTRACT NO. 93564		
FED. ROAD DIST. NO. 7 ILLINOIS		FED. AID PROJECT BRS-0596(105)			