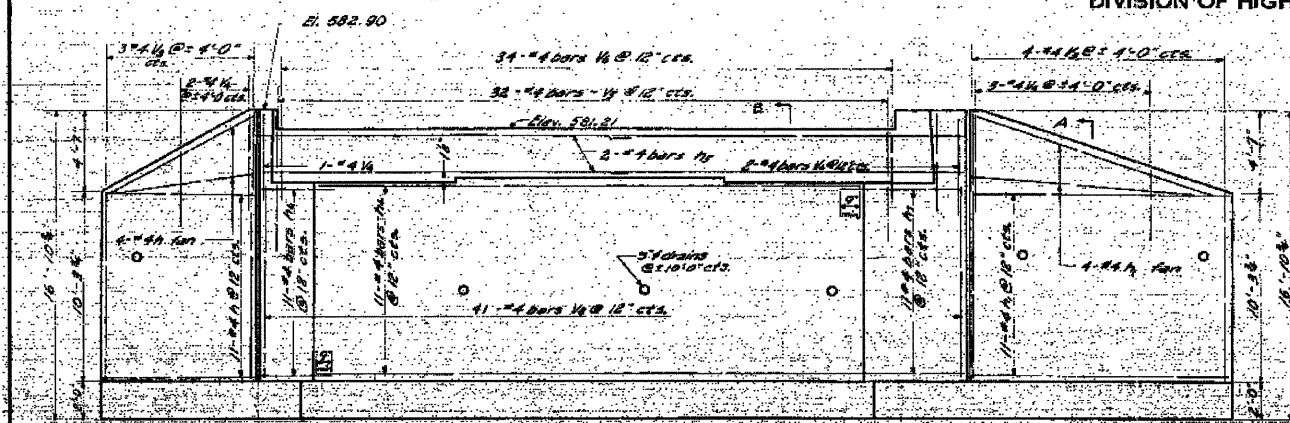
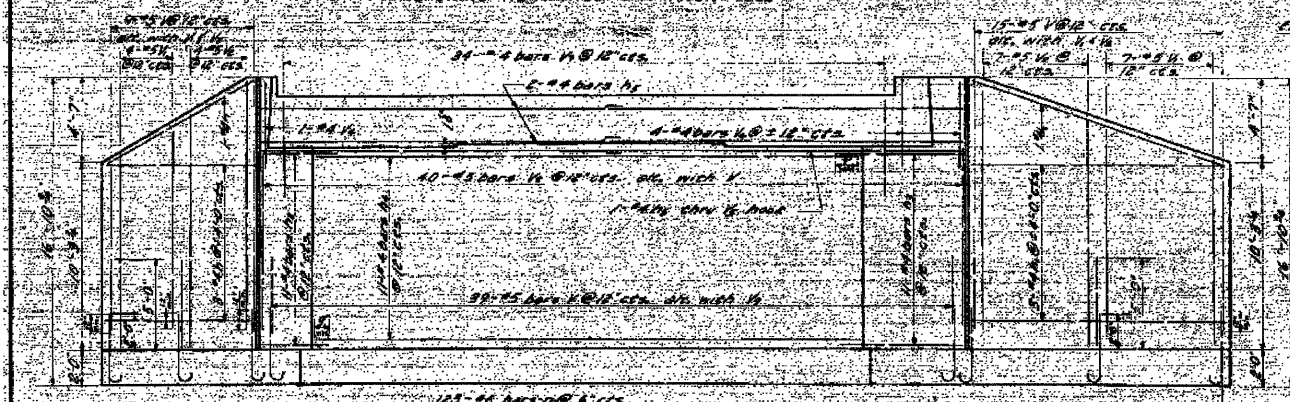


STATE OF ILLINOIS
DEPARTMENT OF PUBLIC WORKS & BUILDINGS
DIVISION OF HIGHWAYS

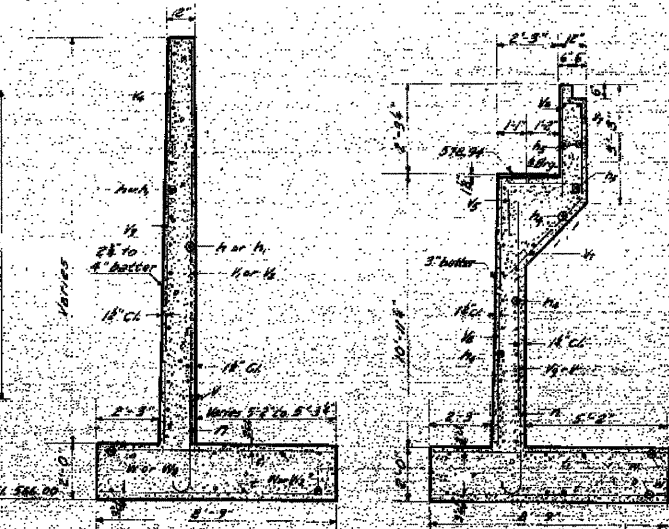
ROUTE NO.	SECTION	COUNTY	TOTAL SHEETS	SHEET NO.
157-11	PIKE	PIKE	28	23
FED. ROAD DIST. NO. 7		ILLINOIS		



ELEVATION
SHOWING REINFORCEMENT FRONT FACE

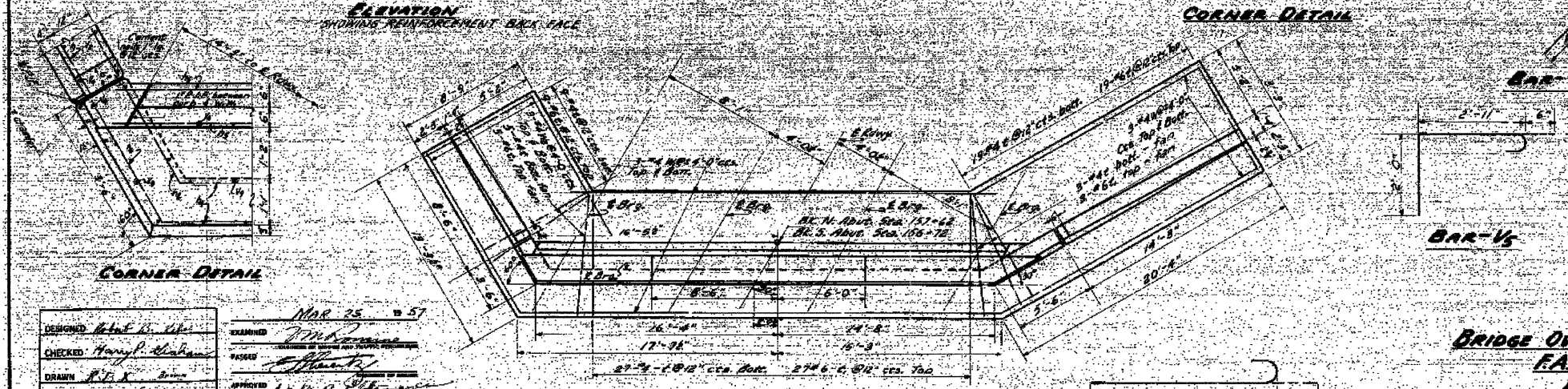


ELEVATION
SHOWING REINFORCEMENT BACK FACE



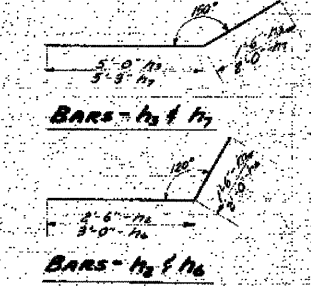
SECTION A-A
Taken @ Right Angles

SECTION B-B
Taken @ Right Angles



PLAN

BAR-D



BAR# 13 & 14

BAR# 13 & 14

BILL OF MATERIAL
TWO ABUTMENTS

Bar	No.	Size	Length	Shape
1	98	#4	8'-0"	
2	30	#4	12'-0"	
3	22	#4	14'-0"	
4	22	#4	6'-6"	
5	44	#4	25'-0"	
6	20	#4	10'-6"	
7	22	#4	5'-0"	
8	22	#4	7'-6"	
9	250	#4	1'-5"	
10	120	#4	8'-6"	
11	106	#4	8'-6"	
12	126	#4	5'-0"	
13	22	#4	10'-0"	
14	22	#4	12'-6"	
15	14	#4	10'-0"	
16	26	#4	5'-0"	
17	66	#4	5'-5"	
18	60	#4	5'-0"	
19	68	#4	10'-0"	
20	80	#4	8'-5"	
21	12	#4	20'-0"	
22	24	#4	17'-0"	
23	12	#4	18'-0"	

Class I Concrete Cu Yds. 560
Reinforcement Bars Tons 3050
Class A Facing for Structure Cu Yds. 270
Class B Facing for Structure Cu Yds. 230

DESIGNED: *W.H. G. Co.*
CHECKED: *Harry P. ...*
DRAWN: *R.D.S.*
CHECKED: *H.A.B.*

DATE: *NOV 25 1957*

ABUTMENTS
BRIDGE OVER NORTH FORK OF HADLEY CREEK
R.A.S. RT. 596 SEC. 21 B
PIKE COUNTY
STATION 157+17

EXISTING STRUCTURE PLANS
PIKE COUNTY
SECTION 11-00089-00-BR
C.H. 4 OVER NORTH FORK HADLEY CREEK

SHEET NO. 16 17 SHEETS	ROUTE NO.	SECTION	COUNTY	TOTAL SHEETS	SHEET NO.
	CH 4	11-00089-00-BR	PIKE	28	23
	S.N. 075-3324		CONTRACT NO. 93564		
FED. ROAD DIST. NO. 7 ILLINOIS		FED. AID PROJECT BRS-0596(105)			