

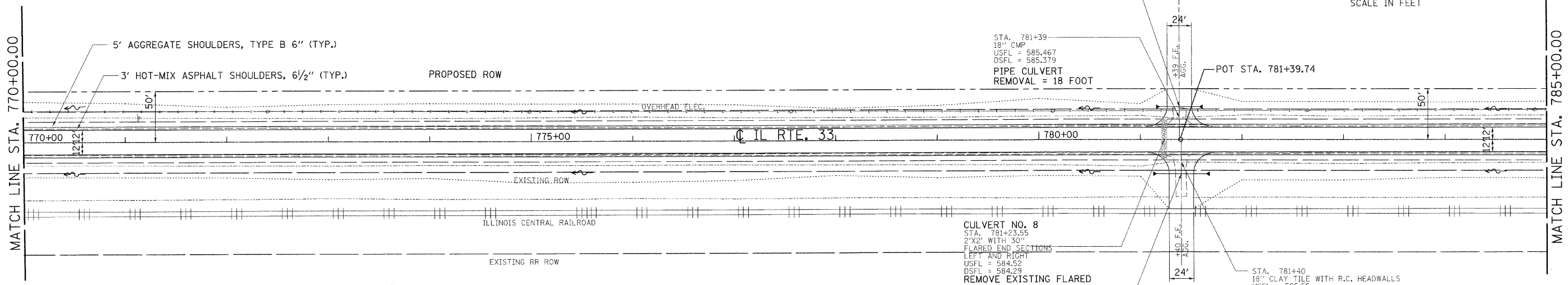
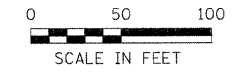
DESIGN		
INT.	DATE	REASON

F.A.P. RTE.	SECTION	COUNTY	TOTAL SHEETS	SHEET NO.
95		JASPER	546	36
STA. 770+00.00		TO STA. 785+00.00		
FED. ROAD DIST. NO.		ILLINOIS	FED. AID PROJECT	
*(5,6)Y,RS-2,6BR-7				
CONTRACT NO. 94437				

**LEGEND**

- PATCHING
- TRENCH BACKFILL
- CONSTRUCTION LIMITS
- TREE TO BE REMOVED
- HORIZONTAL CONTROL STATION

781+39, 32' LT.  
PIPE CULVERTS, CLASS D,  
TYPE 1 24" = 38 FOOT  
END SECTIONS 24" = 2 EACH  
USFL = 585.45  
DSFL = 585.37



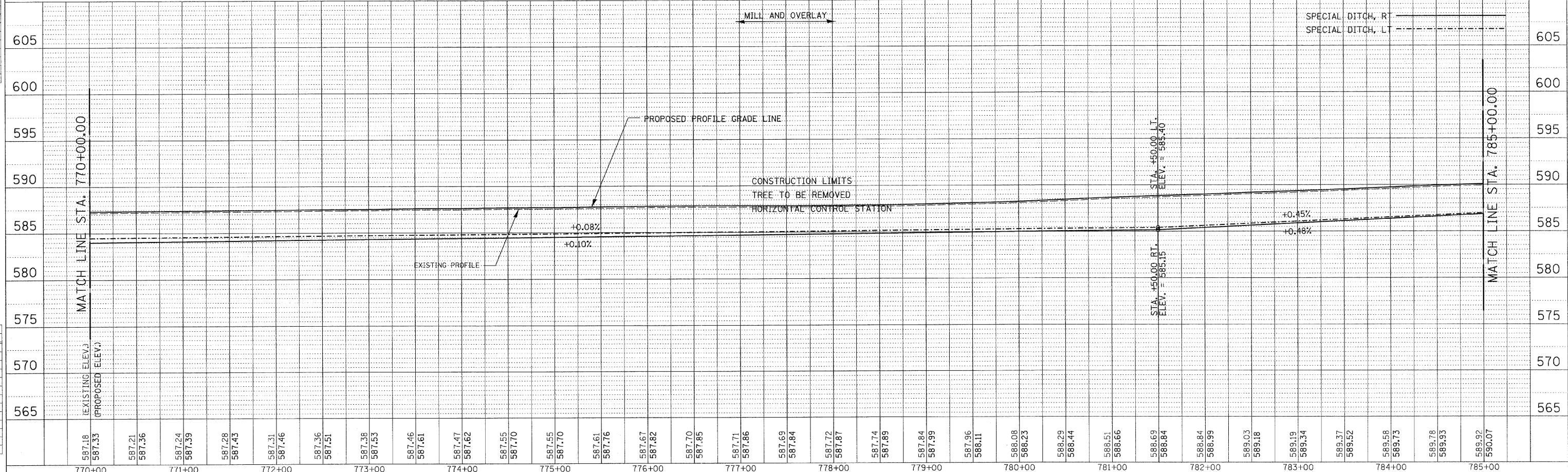
STA. 781+39  
18" CMP  
USFL = 585.467  
DSFL = 585.379  
PIPE CULVERT  
REMOVAL = 18 FOOT

CULVERT NO. 8  
STA. 781+23.55  
2'X2' WITH 30"  
FLARED END SECTIONS  
LEFT AND RIGHT  
USFL = 584.52  
DSFL = 584.29  
REMOVE EXISTING FLARED  
END SECTION = 2 EACH  
FILLING EXISTING  
CULVERTS = 1 EACH

STA. 781+40  
18" CLAY TILE WITH R.C. HEADWALLS  
USFL = 585.55  
DSFL = 585.48  
PIPE CULVERT  
REMOVAL = 18 FOOT

781+40, 33' RT.  
PIPE CULVERTS, CLASS D,  
TYPE 1 24" = 48 FOOT  
END SECTIONS 24" = 2 EACH  
USFL = 585.23  
DSFL = 585.11

REVISION	DATE	BY	COMPUTER FILE NO.
			PLAN3-3.DGN
			PROJECT: 01256
			2/26/10-FAV



PLAN	DATE	BY

PLOTS & CHECKS		
INT.	DATE	REASON

PR. FILE	DATE	BY

CHECKS		
INT.	DATE	REASON