

| DESIGN | DATE | REASON |
|--------|------|--------|
| | | |
| | | |
| | | |

| PLAN | DATE | BY |
|------|------|----|
| | | |
| | | |
| | | |

| PLOTS & CHECKS | DATE | NO. | REASON |
|----------------|------|-----|--------|
| | | | |
| | | | |
| | | | |

| PROJECT | DATE | BY |
|---------|------|----|
| | | |
| | | |
| | | |

| CHECKS | DATE | REASON |
|--------|------|--------|
| | | |
| | | |
| | | |

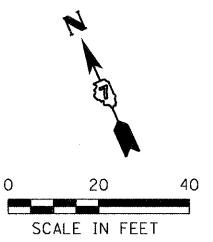
PROP. CURVE C05
 PI STA. 834+55.66
 $\Delta = 34^\circ 47' 49''$ (LT)
 $D = 4^\circ 31' 58''$
 $R = 1,264.04'$
 $T = 396.09'$
 $L = 767.68'$
 $E = 60.60'$
 PC STA. 830+59.57
 PT STA. 838+27.25
 EXIST. SE. = 4.1%

STA. 835+82.06
 TRIPLE 11"x5"
 R.C. BOX CULVERT
 SKEWED LT. AT 30°
 SN 040-2007
 YEAR 1993

STA. 838+98, 43' LT.
 PIPE CULVERTS, CLASS A,
 TYPE 1 24" = 52 FOOT
 PRC FLARED END
 SECTIONS 24" = 2 EACH
 USFL = 566.68 (45.6' LT.)
 DSFL = 566.44 (43.1' LT.)

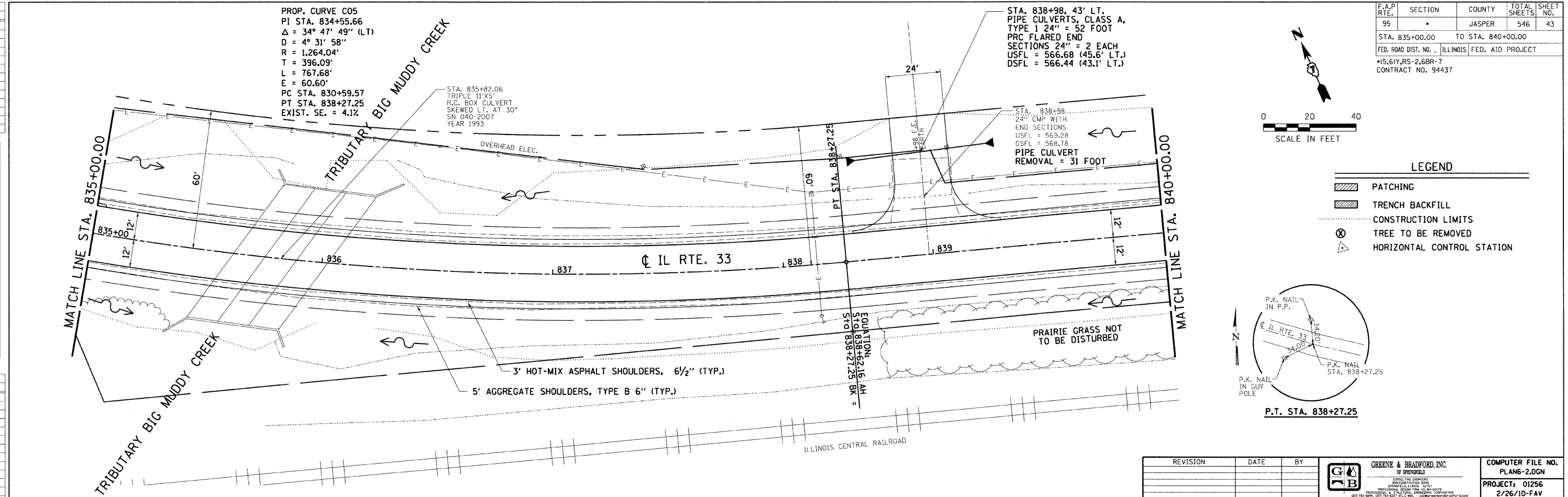
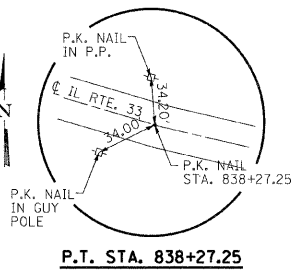
STA. 838+98...
 24" CMP WITH
 END SECTIONS
 USFL = 569.28
 DSFL = 568.78
 PIPE CULVERT
 REMOVAL = 31 FOOT

| F.A.P. RTE. | SECTION | COUNTY | TOTAL SHEETS | SHEET NO. |
|---|---------|-------------------|--------------|-----------|
| 95 | • | JASPER | 546 | 43 |
| STA. 835+00.00 | | TO STA. 840+00.00 | | |
| FED. ROAD DIST. NO. ILLINOIS FED. AID PROJECT | | | | |
| *15.61Y,RS-2.6BR-7 | | | | |
| CONTRACT NO. 94437 | | | | |



LEGEND

- PATCHING
- TRENCH BACKFILL
- CONSTRUCTION LIMITS
- TREE TO BE REMOVED
- HORIZONTAL CONTROL STATION



| REVISION | DATE | BY |
|----------|------|----|
| | | |
| | | |
| | | |

GREENE & BRADFORD, INC.
 OF SPRINGFIELD
 CONSULTING ENGINEERS
 1000 W. WASHINGTON ST., SUITE 100
 SPRINGFIELD, ILLINOIS 62761-1000
 PROFESSIONAL ENGINEERS LICENSE NO. 0019
 2021 783-8841, 2022 783-8227, 815 E. WASHINGTON ST., SPRINGFIELD, ILLINOIS 62761-1000

COMPUTER FILE NO. PLAN6-2.0GN
 PROJECT: 01256
 2/26/10-FAV

