

INT.	DATE	REASON

PLAN	DATE	BY	REASON

PLOTS & CHECKS	INT.	DATE	NO.	REASON

PROFILE	DATE	BY	REASON

CHECKS	INT.	DATE	REASON

PROP. CURVE C06
 PI STA. 868+34.65
 $\Delta = 13^\circ 53' 30''$ (RT)
 $D = 2^\circ 00' 00''$
 $R = 2,864.70'$
 $T = 348.99'$
 $L = 694.56'$
 $E = 21.18'$
 PC STA. 864+85.66
 PT STA. 871+80.22
 EXIST. SE. = 3.7%

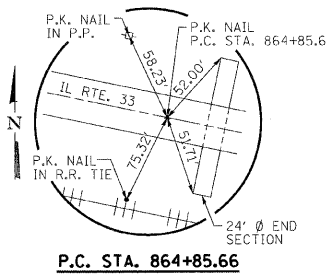
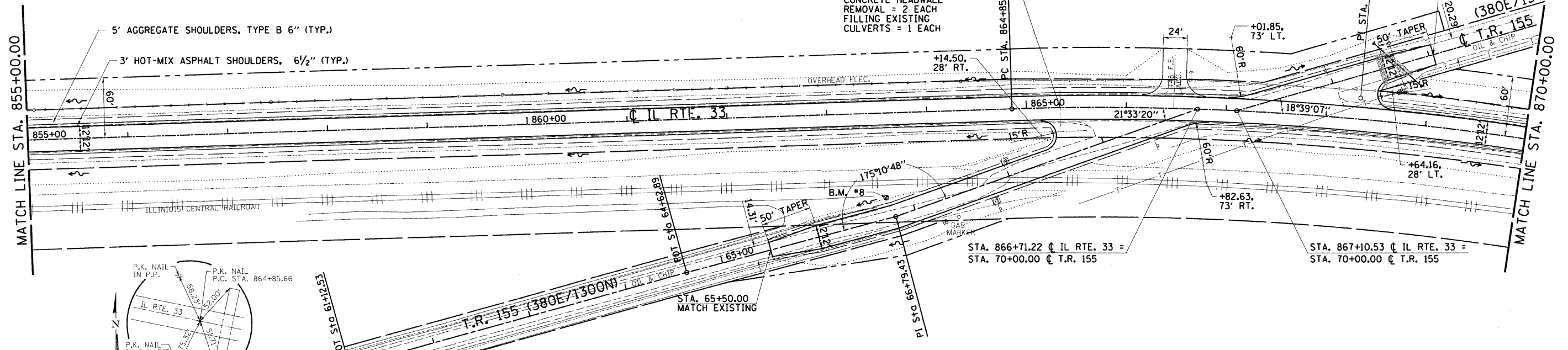
CULVERT NO. 10
 STA. 865+33.60
 $2' \times 1.5'$ WITH 24"
 PRC FLARED
 END SECTIONS
 LEFT AND RIGHT
 USFL = 575.11
 DSFL = 577.70
 REMOVE EXISTING FLARED
 END SECTION = 2 EACH
 CONCRETE HEADWALL
 REMOVAL = 2 EACH
 FILLING EXISTING
 CULVERTS = 1 EACH

LEGEND

- PATCHING
- TRENCH BACKFILL
- CONSTRUCTION LIMITS
- TREE TO BE REMOVED
- HORIZONTAL CONTROL STATION

0 50 100
SCALE IN FEET

F.A.P. RTE.	SECTION	COUNTY	TOTAL SHEETS	SHEET NO.
95		JASPER	546	45
STA. 855+00.00 TO STA. 870+00.00				
FED. ROAD DIST. NO. ILLINOIS TO STA. 870+00.00				
FED. AID PROJECT				
*15.61YRS-2.6BR-7				
CONTRACT NO. 94437				



B.M. #8 : STA. 863+57.85' RT.
 SURVEY MONUMENT
 ELEV. 580.61

REVISION	DATE	BY

GREENE & BRADFORD, INC.
 ENGINEERS

COMPUTER FILE NO. PLAN8-1.DGN
 PROJECT: 01256
 2/26/10-FAV

