

DESIGN		
INT.	DATE	REASON

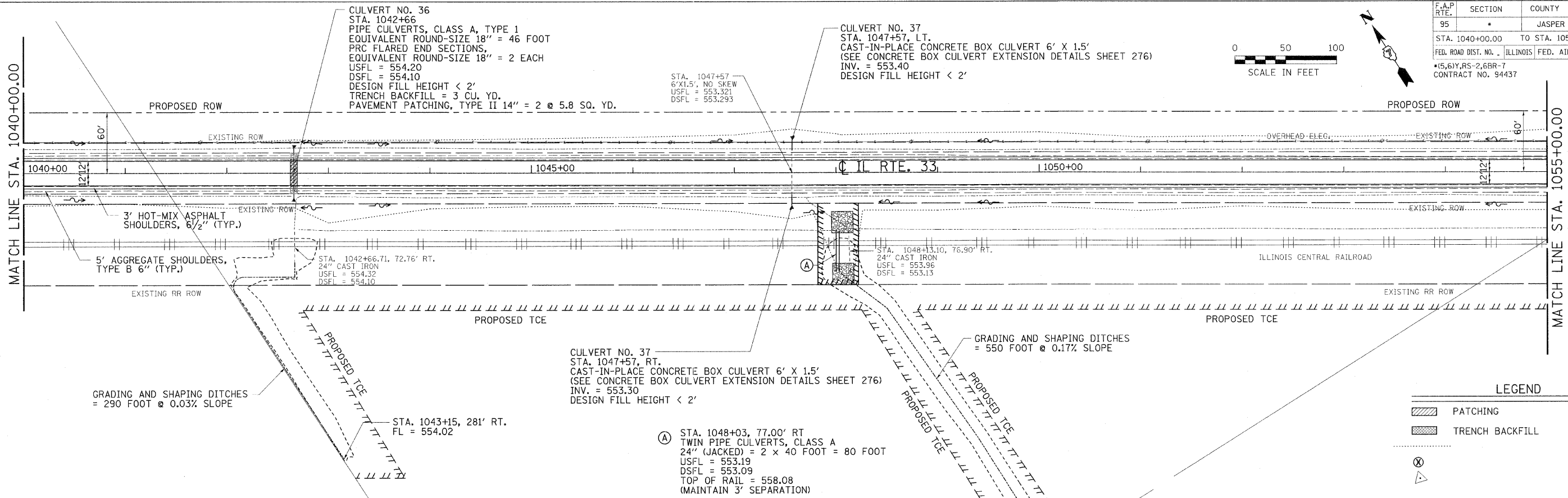
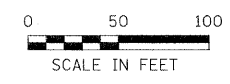
PLAN		
NO.	DATE	BY

PLOTS & CHECKS		
INT.	DATE	NO.

PROFILE		
NO.	DATE	BY

CHECKS		
INT.	DATE	REASON

F.A.P. RTE.	SECTION	COUNTY	TOTAL SHEETS	SHEET NO.
95	*	JASPER	546	58
STA. 1040+00.00 TO STA. 1055+00.00		ILLINOIS FED. AID PROJECT		
FED. ROAD DIST. NO. 1		CONTRACT NO. 94437		



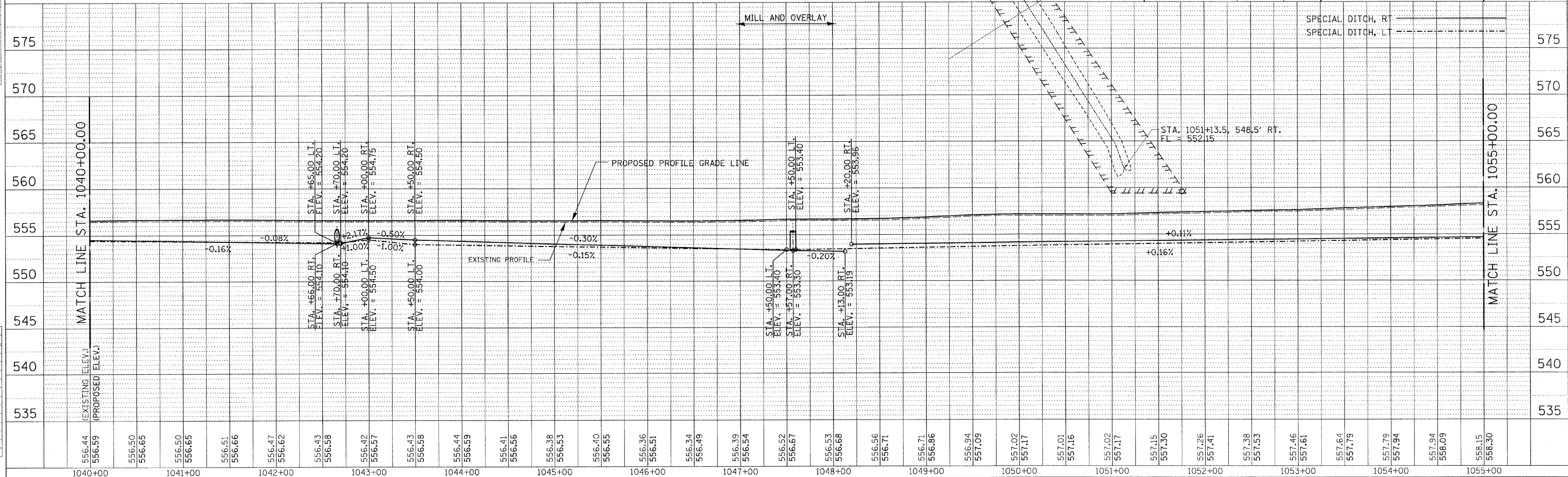
**LEGEND**

- [Hatched Box] PATCHING
- [Cross-hatched Box] TRENCH BACKFILL
- [Circle with X] SPECIAL DITCH, RT
- [Circle with X] SPECIAL DITCH, LT

REVISION	DATE	BY

**GREENE & BRADFORD, INC.**  
 CONSULTING ENGINEERS  
 1000 N. WASHINGTON ST.  
 SPRINGFIELD, ILLINOIS 62761  
 PROFESSIONAL ENGINEER REG. NO. 01256  
 PROFESSIONAL SEAL AND SIGNATURE REQUIRED

**COMPUTER FILE NO.**  
 PLAN12-2.DGN  
 PROJECT: 01256  
 2/26/10-FAV



IDOTPP-50 - 1:50 8/07/00