

F.A.P. RTE.	SECTION	COUNTY	TOTAL SHEETS	SHEET NO.
95		JASPER	546	60

STA.	TO STA.	FED. ROAD DIST. NO.	ILLINOIS	FED. AID PROJECT
1070+00.00	1085+00.00			

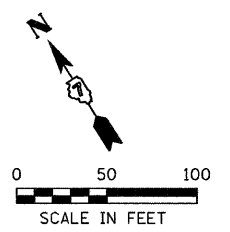
*5.61Y,RS-2.6BR-7
CONTRACT NO. 94437

CULVERT NO. 42
STA. 1082+76, 31' LT.
PIPE CULVERT REMOVAL = 7 FOOT
PIPE CULVERTS, CLASS A,
TYPE 1 24" = 12 FOOT
PRC FLARED END SECTIONS
24" = 1 EACH
INV. = 554.00
TRENCH BACKFILL = 2 CU. YD.
(SEE CONCRETE COLLAR DETAILS SHEET 236)

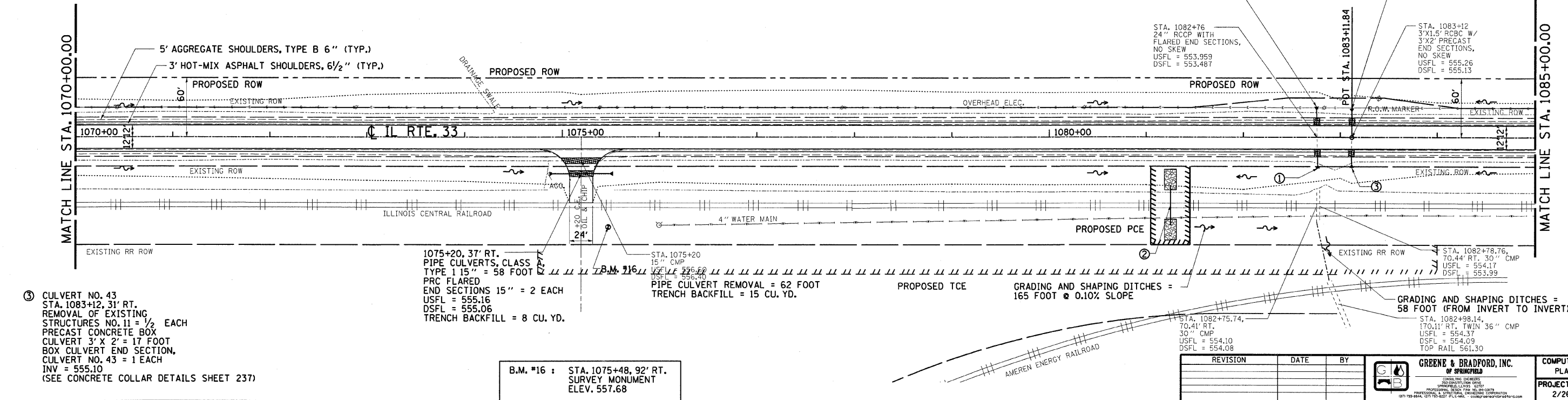
CULVERT NO. 43
STA. 1083+12, 30' LT.
REMOVAL OF EXISTING
STRUCTURES NO. 11 = 1/2 EACH
PRECAST CONCRETE BOX
CULVERT 3' X 2' = 18 FOOT
BOX CULVERT END SECTION,
CULVERT NO. 43 = 1 EACH
INV. = 555.35
(SEE CONCRETE COLLAR DETAILS SHEET 237)

LEGEND

- PATCHING
- TRENCH BACKFILL
- CONSTRUCTION LIMITS
- TREE TO BE REMOVED
- HORIZONTAL CONTROL STATION



- ① **CULVERT NO. 42**
STA. 1082+76, 32' RT.
PIPE CULVERT REMOVAL = 7 FOOT
PIPE CULVERTS, CLASS A,
TYPE 1 24" = 14 FOOT
PRC FLARED END SECTIONS
24" = 1 EACH
INV. = 553.40
TRENCH BACKFILL = 2 CU. YD.
(SEE CONCRETE COLLAR DETAILS SHEET 236)
- ② **STA. 1081+25, 70' RT.**
PIPE CULVERTS, CLASS A,
24" (JACKED) = 40 FOOT
USFL = 554.17
DSFL = 553.99
TOP OF RAIL = 560.05



- ③ **CULVERT NO. 43**
STA. 1083+12, 31' RT.
REMOVAL OF EXISTING
STRUCTURES NO. 11 = 1/2 EACH
PRECAST CONCRETE BOX
CULVERT 3' X 2' = 17 FOOT
BOX CULVERT END SECTION,
CULVERT NO. 43 = 1 EACH
INV. = 555.10
(SEE CONCRETE COLLAR DETAILS SHEET 237)

B.M. #16 : STA. 1075+48, 92' RT.
SURVEY MONUMENT
ELEV. 557.68

REVISION	DATE	BY

GREENE & BRADFORD, INC.
CONSULTING ENGINEERS
1000 S. WASHINGTON ST., SUITE 200
JASPER, ILLINOIS 61753
TEL: 309.438.1111 FAX: 309.438.1112
WWW.GREENEANDBRADFORD.COM

COMPUTER FILE NO.
PLAN13-1.DGN
PROJECT: 01256
2/26/10-FAV

