

DESIGN	INT.	DATE	REASON

PLAN	BY	DATE

PLOTS & CHECKS	INT.	DATE	NO.	REASON

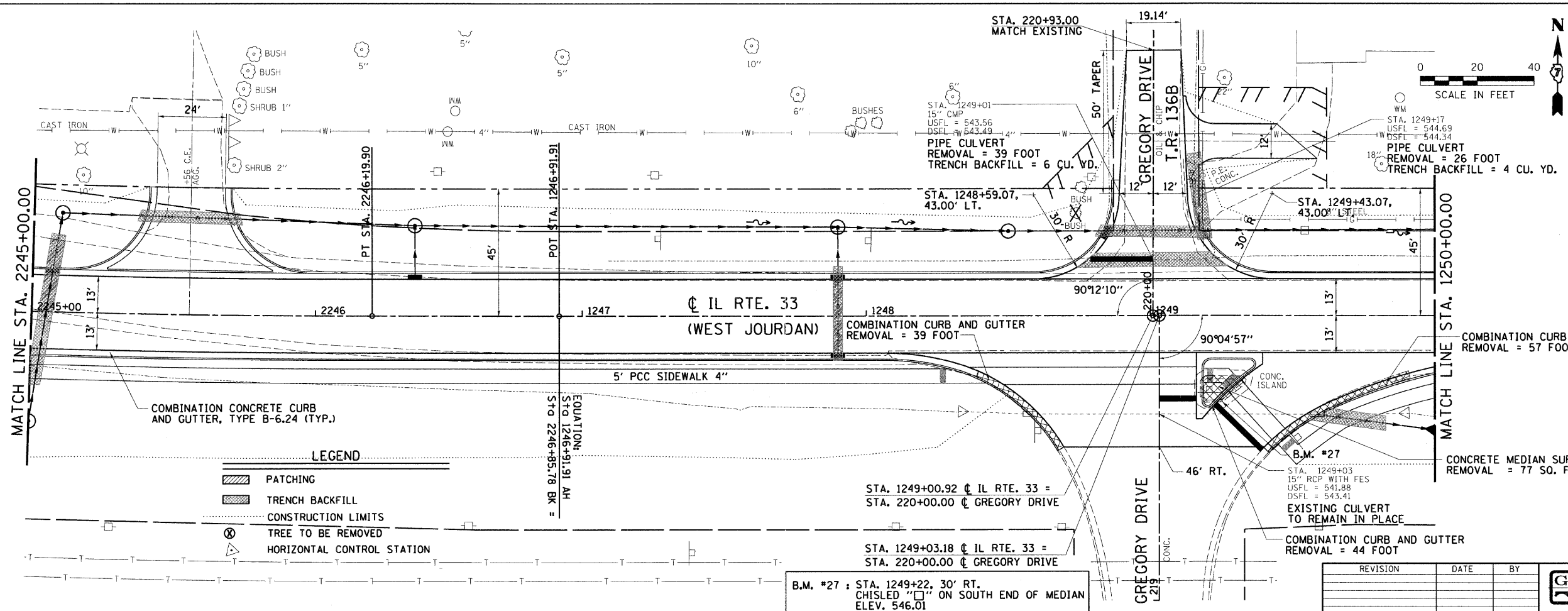
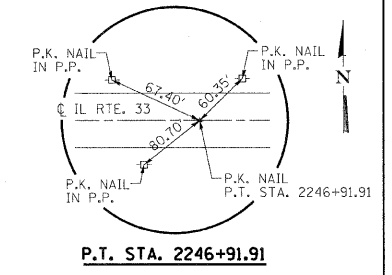
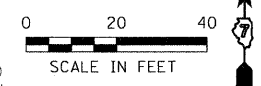
PROFILE	BY	DATE

CHECKS	INT.	DATE	REASON

F.A.P. RTE.	SECTION	COUNTY	TOTAL SHEETS	SHEET NO.
95		JASPER	546	75

STA. 2245+00.00 TO STA. 1250+00.00  
 FED. ROAD DIST. NO. ILLINOIS FED. AID PROJECT  
 \*15.61Y.RS-2.6BR-7  
 CONTRACT NO. 94437

PROP. CURVE REL2  
 PI STA. 2244+20.15  
 $\Delta = 5^{\circ} 59' 53''$  (LT)  
 $D = 1^{\circ} 30' 00''$   
 $R = 3,819.72'$   
 $T = 200.12'$   
 $L = 399.87'$   
 $E = 5.24'$   
 TRANSITION LENGTH = 186'  
 BEGIN SE. TRANSITION AT STA. 2240+83  
 BEGIN FULL SE. AT STA. 2242+69  
 END FULL SE. AT STA. 2245+71  
 END SE TRANSITION AT STA. 2247+57  
 SE. = 0.028'/FT.  
 PC STA. 2242+20.03  
 PT STA. 2246+19.90



**LEGEND**

- PATCHING
- TRENCH BACKFILL
- CONSTRUCTION LIMITS
- TREE TO BE REMOVED
- HORIZONTAL CONTROL STATION

REVISION	DATE	BY

**GREENE & BRADFORD, INC.**  
 OF SPRINGFIELD  
 CONSULTING ENGINEERS  
 1000 N. WASHINGTON ST., SUITE 200  
 SPRINGFIELD, ILLINOIS 62761  
 (618) 266-1111 FAX (618) 266-1112  
 WWW.GREENE-AND-BRADFORD.COM

COMPUTER FILE NO. PLAN19-1.DGN  
 PROJECT: 01256  
 2/26/10-FAV

