

| DESIGN | INT. | DATE | REASON |
|--------|------|------|--------|
|        |      |      |        |

| PLAN | DATE | BY |
|------|------|----|
|      |      |    |

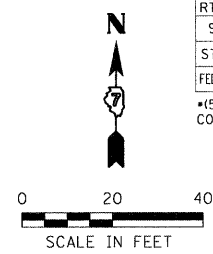
| PLOTS & CHECKS | INT. | DATE | NO. | REASON |
|----------------|------|------|-----|--------|
|                |      |      |     |        |

| PROFILE | DATE | BY |
|---------|------|----|
|         |      |    |

| CHECKS | INT. | DATE | REASON |
|--------|------|------|--------|
|        |      |      |        |

| F.A.P. RTE. | SECTION | COUNTY | TOTAL SHEETS | SHEET NO. |
|-------------|---------|--------|--------------|-----------|
| 95          |         | JASPER | 546          | 78        |

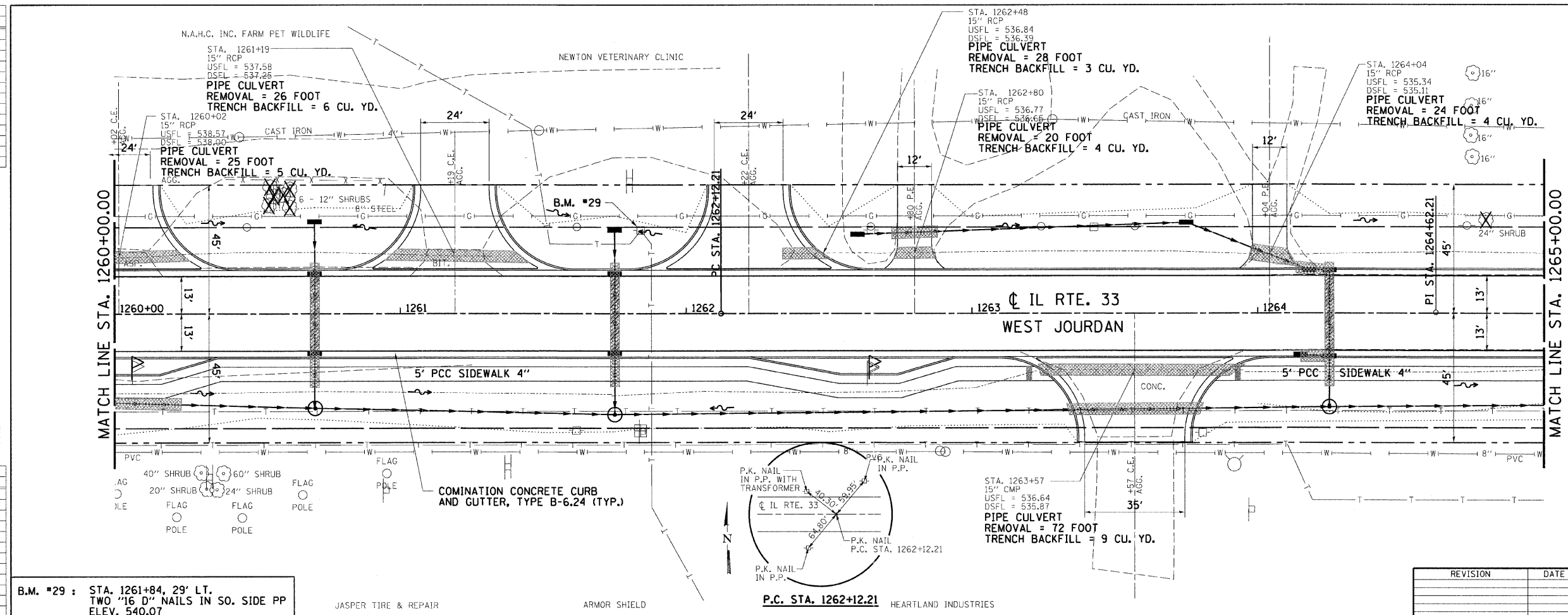
STA. 1260+00.00 TO STA. 1265+00.00  
 FED. ROAD DIST. NO. ILLINOIS FED. AID PROJECT  
 \*15,61Y,RS-2,6BR-7  
 CONTRACT NO. 94437



**LEGEND**

- PATCHING
- TRENCH BACKFILL
- CONSTRUCTION LIMITS
- TREE TO BE REMOVED
- HORIZONTAL CONTROL STATION

PROP. CURVE C10  
 PI STA. 1264+62.21  
 $\Delta = 0^\circ 15' 46''$  (RT)  
 $D = 0^\circ 03' 09''$   
 $R = 108,968.13'$   
 $T = 250.00'$   
 $L = 500.00'$   
 $E = 0.29'$   
 PC STA. 1262+12.21  
 PT STA. 1267+12.21  
 SE. = N.C.



B.M. #29 : STA. 1261+84, 29' LT.  
 TWO "16 D" NAILS IN SO. SIDE PP  
 ELEV. 540.07

JASPER TIRE & REPAIR ARMOR SHIELD  
 P.C. STA. 1262+12.21 HEARTLAND INDUSTRIES

| REVISION | DATE | BY |
|----------|------|----|
|          |      |    |

GREENE & BRADFORD, INC.  
 CONSULTING ENGINEERS  
 OF SPRINGFIELD  
 PROFESSIONAL ENGINEERING CORPORATION  
 600 N. 11TH ST. SPRINGFIELD, ILL. 62761  
 PHONE: 217-223-1111 FAX: 217-223-1112

COMPUTER FILE NO. PLAN20-1.DGN  
 PROJECT: 01256  
 2/26/10-FAV

