

INT.	DATE	REASON

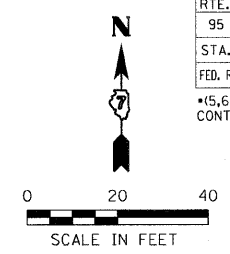
PROP. CURVE C10
 PI STA. 1264+62.21
 $\Delta = 0^\circ 15' 46''$ (RT)
 $D = 0^\circ 03' 09''$
 $R = 108,968.13'$
 $T = 250.00'$
 $L = 500.00'$
 $E = 0.29'$
 PC STA. 1262+12.21
 PT STA. 1267+12.21
 SE. = N.C.

STA. 1267+22
 15" RCP
 USFL = 529.79
 DSFL = 529.26
 PIPE CULVERT
 REMOVAL = 40 FOOT
 TRENCH BACKFILL = 6 CU. YD.

STA. 1266+84
 15" RCP
 USFL = 529.52
 DSFL = 528.34
 PIPE CULVERT
 REMOVAL = 93 FOOT
 TRENCH BACKFILL = 19 CU. YD.

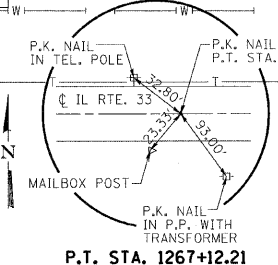
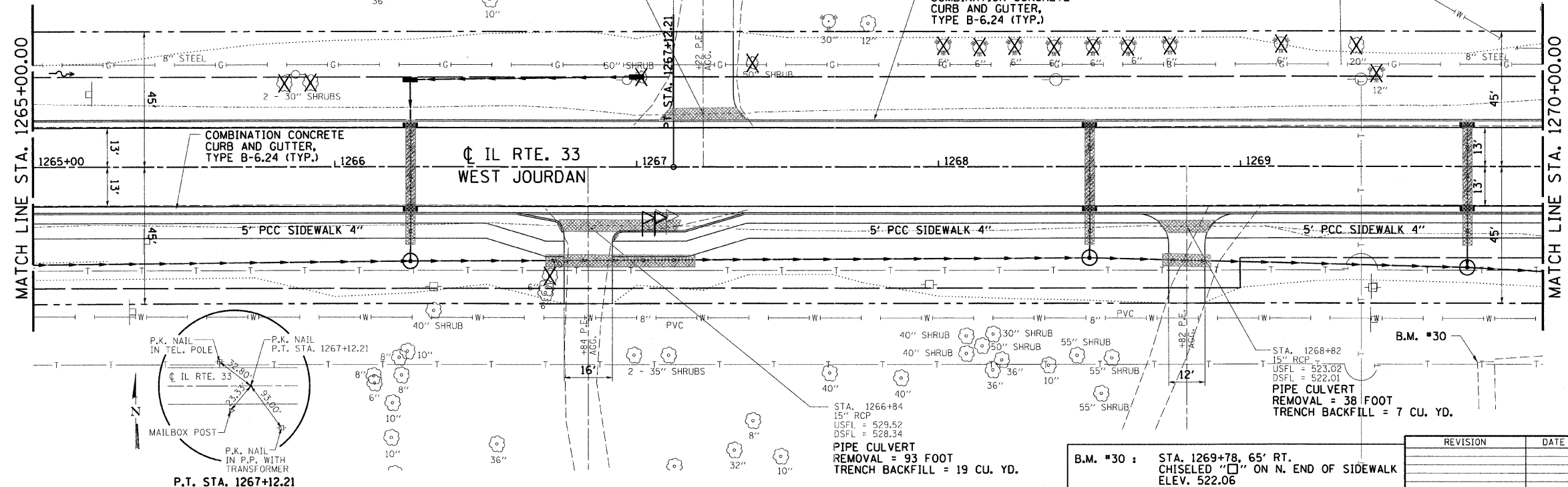
B.M. #30 : STA. 1269+78, 65' RT.
 CHISELED "□" ON N. END OF SIDEWALK
 ELEV. 522.06

F.A.P. RTE.	SECTION	COUNTY	TOTAL SHEETS	SHEET NO.
95		JASPER	546	79
STA. 1265+00.00		TO STA. 1270+00.00		
FED. ROAD DIST. NO.		ILLINOIS	FED. AID PROJECT	
*15.61Y.RS-2.6BR-7 CONTRACT NO. 94437				



LEGEND

- PATCHING
- TRENCH BACKFILL
- CONSTRUCTION LIMITS
- TREE TO BE REMOVED
- HORIZONTAL CONTROL STATION



REVISION	DATE	BY

GREENE & BRADFORD, INC.
 OF SPRINGFIELD

REGISTERED PROFESSIONAL ENGINEER
 STATE OF ILLINOIS
 LICENSE NO. 021-00000000

COMPUTER FILE NO.
 PLAN20-2.DGN
 PROJECT: 01256
 2/26/10-FAV

PLAN	DATE	BY

PLOTS & CHECKS	INT.	DATE	NO.	REASON

PROFILE	DATE	BY

CHECKS	INT.	DATE	REASON

