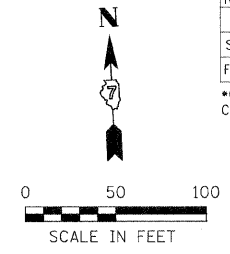
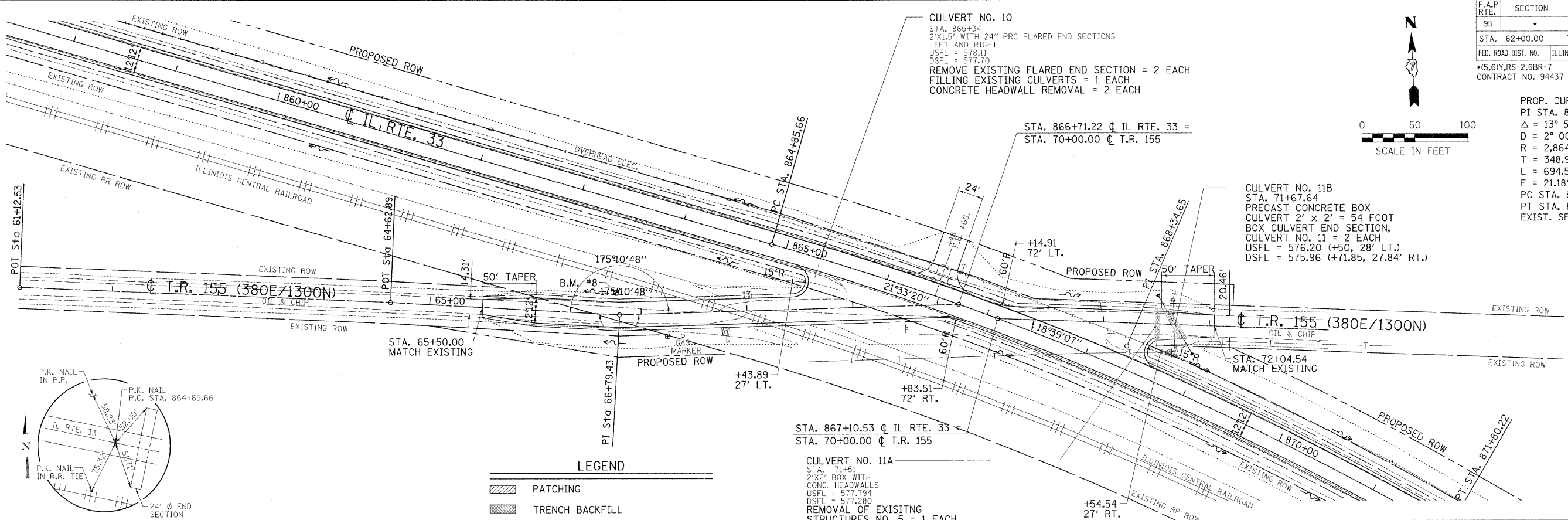


F.A.P. RTE.	SECTION	COUNTY	TOTAL SHEETS	SHEET NO.
95	*	JASPER	546	84
STA. 62+00.00 TO STA. 72+00.00		ILLINOIS FED. AID PROJECT		
FED. ROAD DIST. NO.		CONTRACT NO. 94437		



PROP. CURVE C06  
 PI STA. 868+34.65  
 $\Delta = 13^\circ 53' 30''$  (RT)  
 $D = 2^\circ 00' 00''$   
 $R = 2,864.70'$   
 $T = 348.99'$   
 $L = 694.56'$   
 $E = 21.18'$   
 PC STA. 864+85.66  
 PT STA. 871+80.22  
 EXIST. SE. = 3.7%

DATE	
BY	
REVISION	
NO. 1	
NO. 2	
NO. 3	
NO. 4	
NO. 5	
NO. 6	
NO. 7	
NO. 8	
NO. 9	
NO. 10	



**LEGEND**

	PATCHING
	TRENCH BACKFILL
	CONSTRUCTION LIMITS
	TREE TO BE REMOVED
	HORIZONTAL CONTROL STATION

B.M. #8 : STA. 863+57, 85' RT.  
 SURVEY MONUMENT  
 ELEV. 580.61

REVISION	DATE	BY

**GREENE & BRADFORD, INC.**  
 OF SPRINGFIELD  
 CIVIL ENGINEERS  
 PROFESSIONAL ENGINEERS  
 LICENSE NO. 12122  
 REGISTERED PROFESSIONAL ENGINEERS  
 STATE OF ILLINOIS  
 1000 N. WASHINGTON ST., SPRINGFIELD, ILL. 62760  
 TEL: (217) 522-1111 FAX: (217) 522-1112

**COMPUTER FILE NO.**  
 PLAN25-2.DGN  
**PROJECT:** 01256  
 2/26/10-FAV

DATE	
BY	
REVISION	
NO. 1	
NO. 2	
NO. 3	
NO. 4	
NO. 5	
NO. 6	
NO. 7	
NO. 8	
NO. 9	
NO. 10	

