

DESIGN	DATE	REASON
INT.		

Prop. Curve CIPS1
 PI Sta. 88+00.89
 $\Delta = 28^\circ 14' 59''$ (RT)
 $D = 19^\circ 05' 55''$
 $R = 300.00'$
 $T = 75.49'$
 $L = 147.92'$
 $E = 9.35'$
 TRANSITION LENGTH = 128'
 BEGIN SE. TRANSITION AT STA. 86+30
 BEGIN FULL SE. AT STA. 87+58
 END FULL SE. AT STA. 88+21
 END SE TRANSITION AT STA. 89+21**
 PC Sta. 87+25.40
 PT Sta. 88+73.31
 SE. = 0.04'/FT.

STA. 88+49
 24" CMP
 USFL = -
 DSFL = -
 REMOVE EXISTING
 CULVERTS = 25 FOOT

CULVERT NO. 22
 STA. 946+13, 53' LT.
 PIPE CULVERTS, CLASS A,
 TYPE 1 24" = 60 FOOT
 PRC FLARED END SECTIONS
 24" = 2 EACH
 USFL = 566.04 (+77)
 DSFL = 565.94 (+49)
 TRENCH BACKFILL = 12 CU. YD.

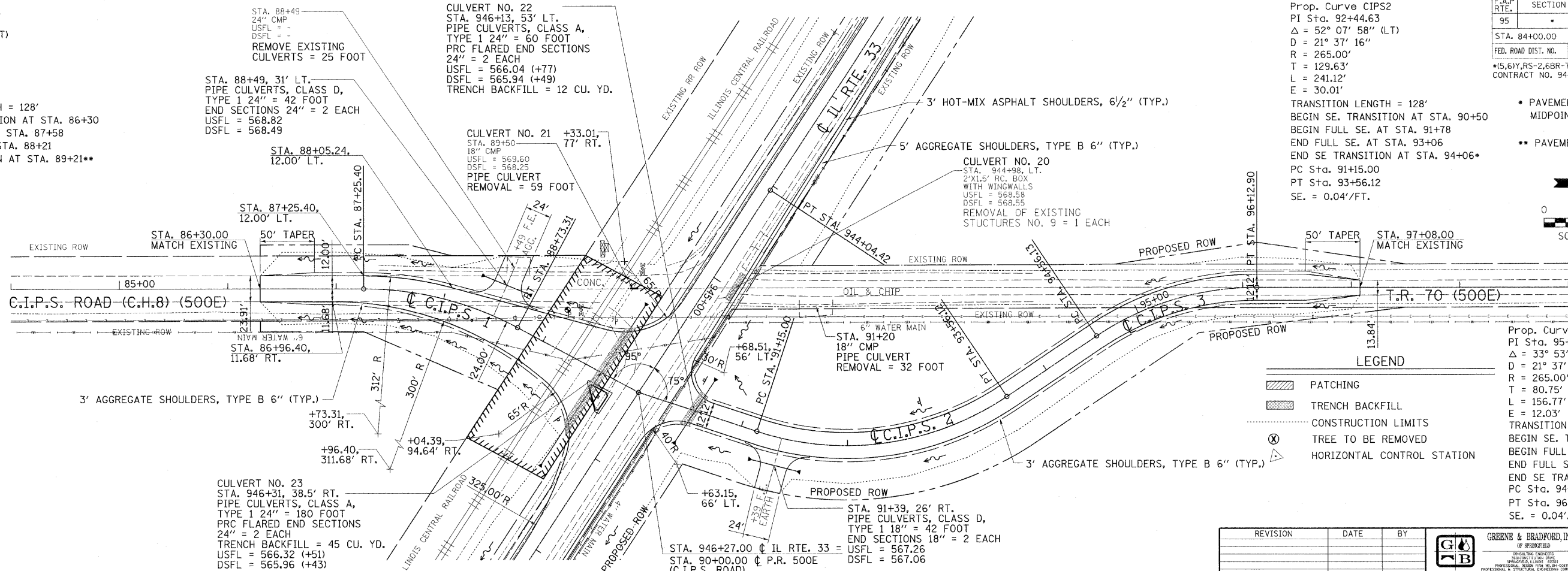
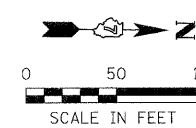
CULVERT NO. 21 +33.01,
 77' RT.
 STA. 89+50
 18" CMP
 USFL = 569.60
 DSFL = 568.25
 PIPE CULVERT
 REMOVAL = 59 FOOT

CULVERT NO. 20
 STA. 944+96, 18" LT.
 24"x15" RC BOX
 WITH WINGWALLS
 USFL = 568.58
 DSFL = 568.55
 REMOVAL OF EXISTING
 STRUCTURES NO. 9 = 1 EACH

Prop. Curve CIPS2
 PI Sta. 92+44.63
 $\Delta = 52^\circ 07' 58''$ (LT)
 $D = 21^\circ 37' 16''$
 $R = 265.00'$
 $T = 129.63'$
 $L = 241.12'$
 $E = 30.01'$
 TRANSITION LENGTH = 128'
 BEGIN SE. TRANSITION AT STA. 90+50
 BEGIN FULL SE. AT STA. 91+78
 END FULL SE. AT STA. 93+06
 END SE TRANSITION AT STA. 94+06*
 PC Sta. 91+15.00
 PT Sta. 93+56.12
 SE. = 0.04'/FT.

F.A.P. RTE.	SECTION	COUNTY	TOTAL SHEETS	SHEET NO.
95	*	JASPER	546	86
STA. 84+00.00		TO STA. 99+00.00		
FED. ROAD DIST. NO.		ILLINOIS FED. AID PROJECT		
*(5,6)Y,RS-2,6BR-7				
CONTRACT NO. 94437				

PAVEMENT SLOPE = 0.00% AT
 MIDPOINT OF REVERSE CURVES
 ** PAVEMENT SLOPE = 0.00%



LEGEND

[Hatched Box]	PATCHING
[Dotted Box]	TRENCH BACKFILL
[Dashed Line]	CONSTRUCTION LIMITS
[Circle with X]	TREE TO BE REMOVED
[Triangle]	HORIZONTAL CONTROL STATION

Prop. Curve CIPS3
 PI Sta. 95+36.88
 $\Delta = 33^\circ 53' 43''$ (RT)
 $D = 21^\circ 37' 16''$
 $R = 265.00'$
 $T = 80.75'$
 $L = 156.77'$
 $E = 12.03'$
 TRANSITION LENGTH = 128'
 BEGIN SE. TRANSITION AT STA. 94+06*
 BEGIN FULL SE. AT STA. 95+06
 END FULL SE. AT STA. 95+80
 END SE TRANSITION AT STA. 97+08
 PC Sta. 94+56.13
 PT Sta. 96+12.90
 SE. = 0.04'/FT.

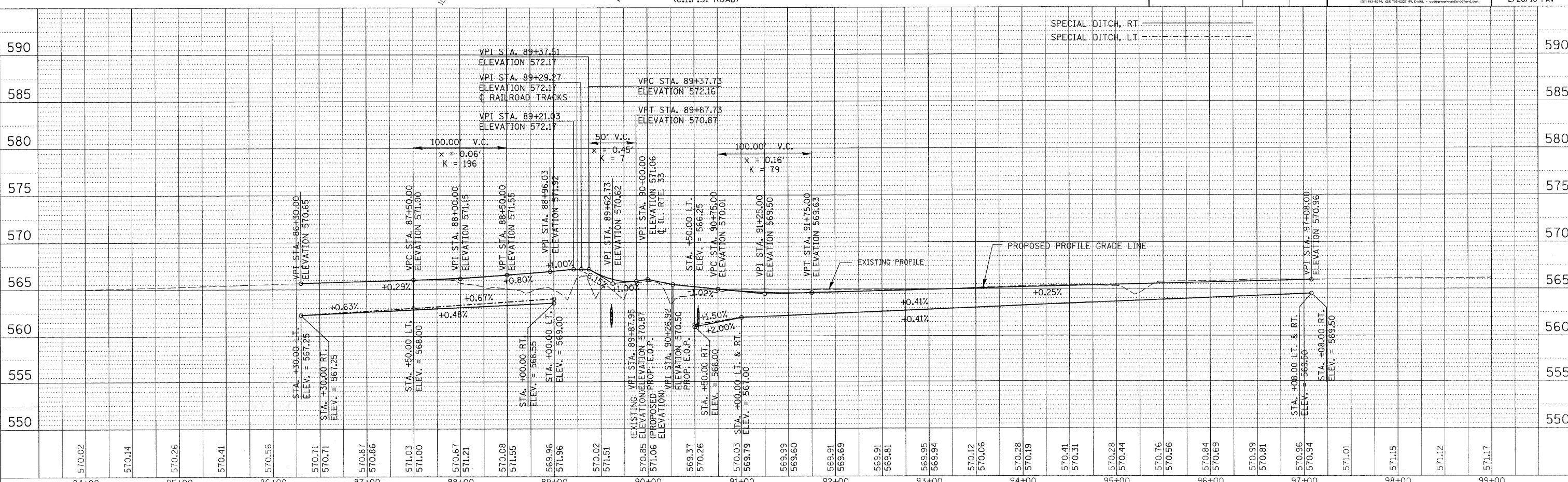
REVISION	DATE	BY

GREENE & BRADFORD, INC.
 OF SPRINGFIELD
 CIVIL ENGINEERS
 REGISTERED PROFESSIONAL ENGINEERS
 PROFESSIONAL REGISTER FILE NO. 04-04518
 PROFESSIONAL SEAL NO. 04-04518
 101-4014, 601-754-2227, 91, E. 4th St., Springfield, IL 62761

COMPUTER FILE NO.
 PLAN22-1.DGN
 PROJECT: 01256
 2/26/10-FAV

DATE	BY

FILE NAME = I:\MCD\2010\JASPER\PLAN22-1.DGN
 PLOT SCALE = 50.0000' / 1" (PLOT DRW = VBI.PDF.dwg)
 PLOT DATE = 8/22/2011
 PLOT TIME = 7:22:50 PM
 OPERATOR = amrncgh



CHECKS	DATE	REASON
INT.		