

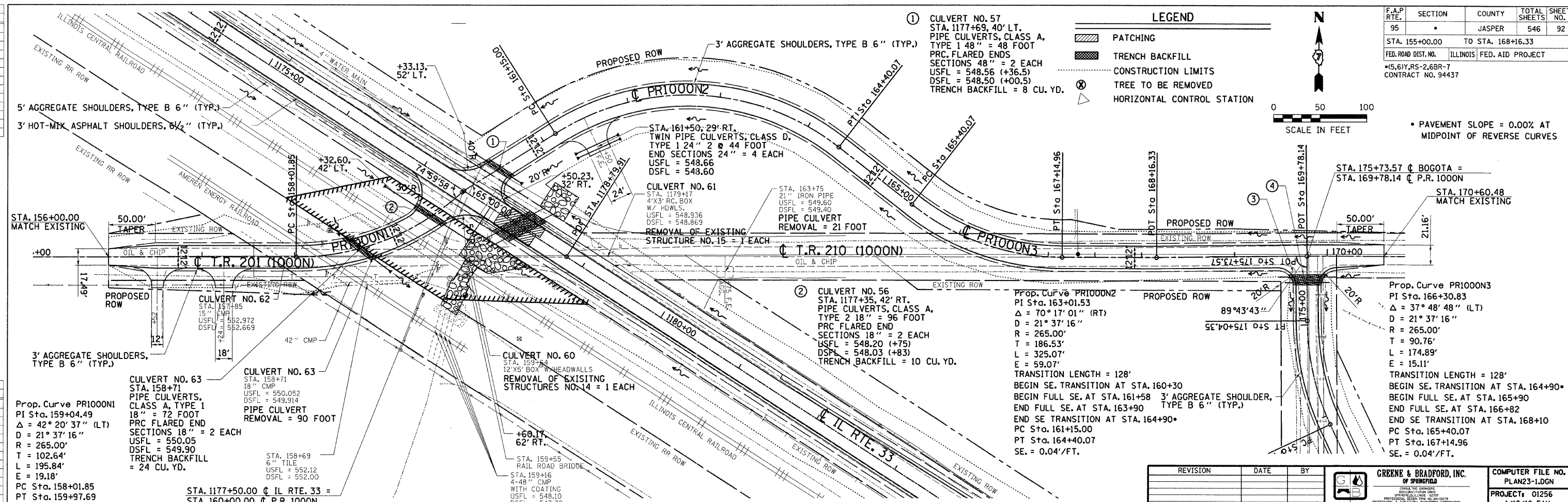
DESIGN	INT.	DATE	REASON

PLAN	NO.	DATE	BY

PLOTS & CHECKS	INT.	DATE	NO.	REASON

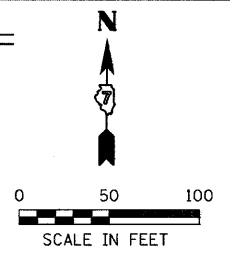
PROF	NO.	DATE	BY

CHECKS	INT.	DATE	REASON



① CULVERT NO. 57
 STA. 1177+69, 40' LT.
 PIPE CULVERTS, CLASS A,
 TYPE 1 48" = 48 FOOT
 PRC. FLARED ENDS
 SECTIONS 48" = 2 EACH
 USFL = 548.56 (+36.5)
 DSFL = 548.50 (+00.5)
 TRENCH BACKFILL = 8 CU. YD.

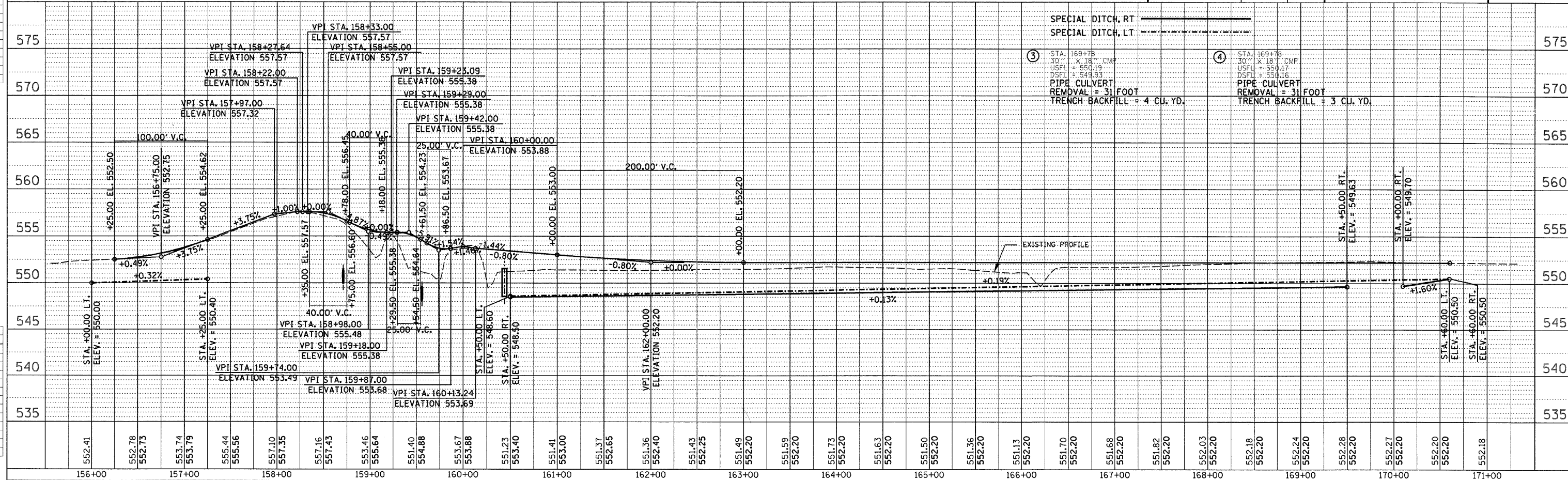
LEGEND	
	PATCHING
	TRENCH BACKFILL
	CONSTRUCTION LIMITS
	TREE TO BE REMOVED
	HORIZONTAL CONTROL STATION



F.A.P. RTE.	SECTION	COUNTY	TOTAL SHEETS	SHEET NO.
95	•	JASPER	546	92

STA. 155+00.00 TO STA. 168+16.33
 FED. ROAD DIST. NO. ILLINOIS FED. AID PROJECT
 *I5,61,RS-2,6BR-7
 CONTRACT NO. 94437

• PAVEMENT SLOPE = 0.00% AT MIDPOINT OF REVERSE CURVES



③ STA. 169+78
 30" X 18" CMP
 USFL = 549.93
 DSFL = 549.16
 PIPE CULVERT
 REMOVAL = 31 FOOT
 TRENCH BACKFILL = 4 CU. YD.

④ STA. 169+78
 30" X 18" CMP
 USFL = 549.17
 DSFL = 550.16
 PIPE CULVERT
 REMOVAL = 31 FOOT
 TRENCH BACKFILL = 3 CU. YD.

REVISION	DATE	BY	COMPUTER FILE NO.
			PLAN23-1.DGN

PROJECT: 01256
 1/18/10-FAV