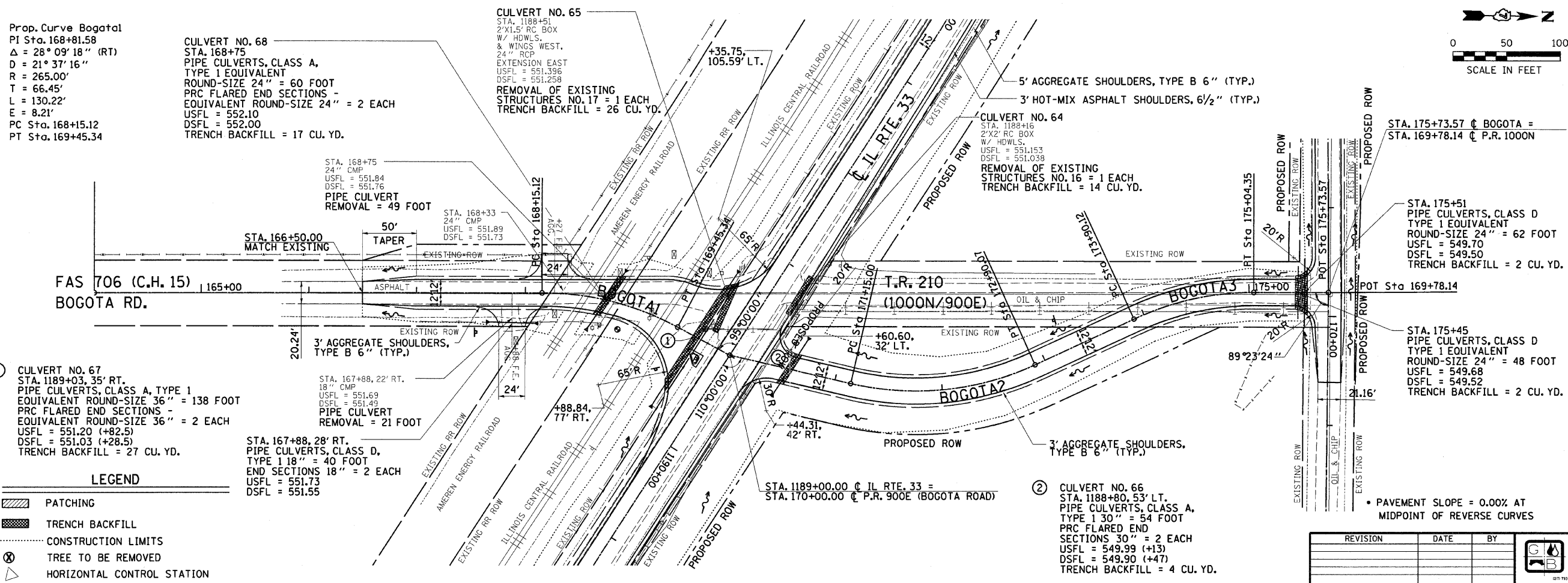
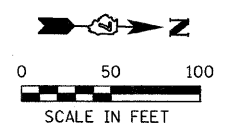


F.A.P. RTE.	SECTION	COUNTY	TOTAL SHEETS	SHEET NO.
95	0	JASPER	546	93

STA. 165+00.00 TO STA. 175+73.57
 FED. ROAD DIST. NO. ILLINOIS FED. AID PROJECT
 *15.6Y,RS-2,6BR-7
 CONTRACT NO. 94437

Prop. Curve Bogota2
 PI Sta. 172+05.86
 $\Delta = 37^\circ 51' 03''$ (LT)
 $D = 21^\circ 37' 16''$
 $R = 265.00'$
 $T = 90.86'$
 $L = 175.07'$
 $E = 15.14'$
 TRANSITION LENGTH = 105'
 BEGIN SE. TRANSITION AT STA. 170+50
 BEGIN FULL SE. AT STA. 171+55
 END FULL SE. AT STA. 172+35
 END SE TRANSITION AT STA. 173+40
 PC Sta. 171+15.00
 PT Sta. 172+90.07
 SE. = 4.0% /FT.

Prop. Curve Bogota3
 PI Sta. 174+48.14
 $\Delta = 24^\circ 41' 46''$ (RT)
 $D = 21^\circ 37' 16''$
 $R = 265.00'$
 $T = 58.01'$
 $L = 114.22'$
 $E = 6.28'$
 TRANSITION LENGTH = 100'
 BEGIN SE. TRANSITION AT STA. 173+40
 BEGIN FULL SE. AT STA. 174+40
 END FULL SE. AT STA. 174+40
 END SE TRANSITION AT STA. 175+40
 PC Sta. 173+90.12
 PT Sta. 175+04.35
 SE. = 4.0% /FT.



- 1 CULVERT NO. 67
 STA. 1189+03.35' RT.
 PIPE CULVERTS, CLASS A, TYPE 1
 EQUIVALENT ROUND-SIZE 36" = 138 FOOT
 PRC FLARED END SECTIONS -
 EQUIVALENT ROUND-SIZE 36" = 2 EACH
 USFL = 551.20 (+82.5)
 DSFL = 551.03 (+28.5)
 TRENCH BACKFILL = 27 CU. YD.
- 2 CULVERT NO. 66
 STA. 1188+80, 53' LT.
 PIPE CULVERTS, CLASS A,
 TYPE 1 30" = 54 FOOT
 PRC FLARED END
 SECTIONS 30" = 2 EACH
 USFL = 549.99 (+13)
 DSFL = 549.90 (+47)
 TRENCH BACKFILL = 4 CU. YD.

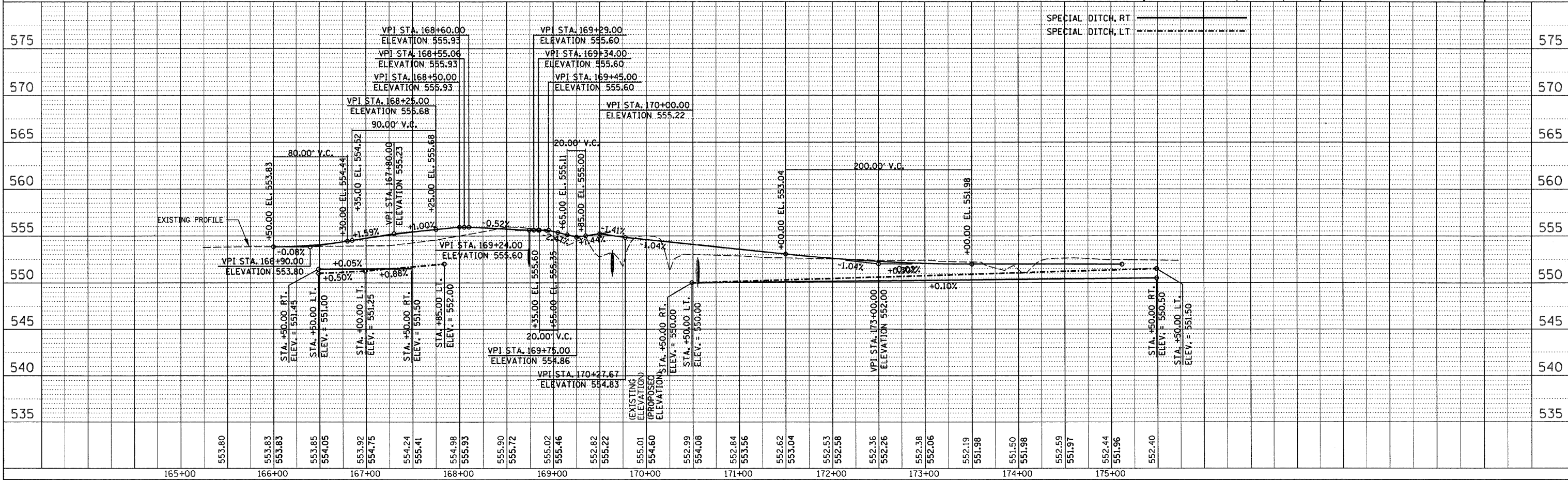
LEGEND

	PATCHING
	TRENCH BACKFILL
	CONSTRUCTION LIMITS
	TREE TO BE REMOVED
	HORIZONTAL CONTROL STATION

REVISION	DATE	BY

GREENE & BRADFORD, INC.
 QUALITY DESIGN
 PROFESSIONAL ENGINEERING
 1575 102nd St., Jasper, IL 62538
 (618) 782-8844

COMPUTER FILE NO. PLAN24-1.DGN
 PROJECT: 01256
 2/26/10-FAV



DESIGN	INT.	DATE	REASON

PLAN	DATE	BY

PLOTS & CHECKS	INT.	DATE	NO.	REASON

PROFILE	DATE	BY

CHECKS	INT.	DATE	REASON