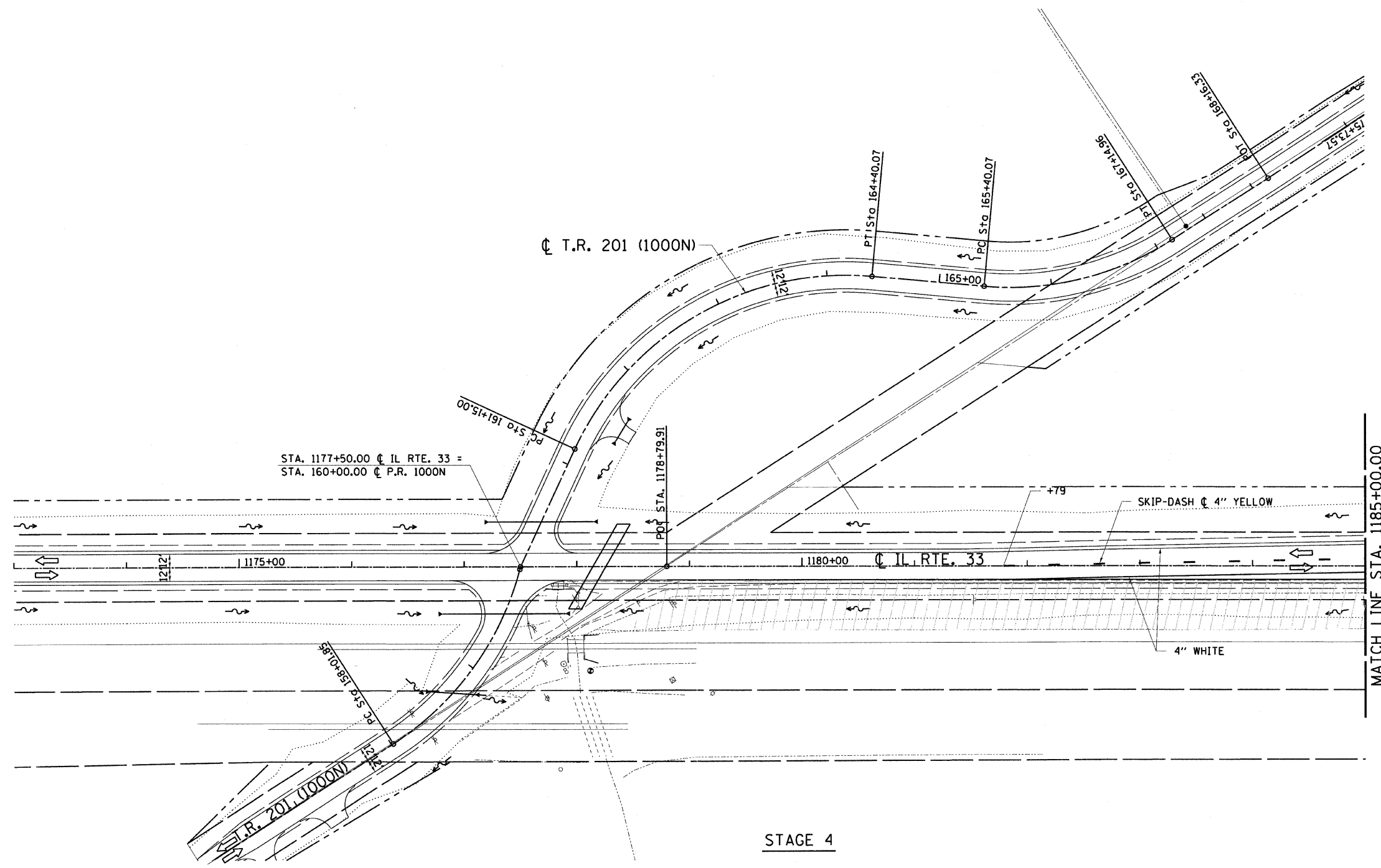
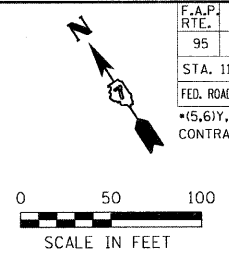


DESIGN		
INT.	DATE	REASON

PLOTS & CHECKS		
INT.	DATE	REASON

CHECKS		
INT.	DATE	REASON

F.A.P. RTE.	SECTION	COUNTY	TOTAL SHEETS	SHEET NO.
95		JASPER	546	123
STA. 1172+50		TO STA. 1185+00.00		
FED. ROAD DIST. NO.		ILLINOIS	FED. AID PROJECT	
*(5,6)Y,RS-2,6BR-7		CONTRACT NO. 94437		



**LEGEND**

WORK ZONE	
DIRECTION OF TRAFFIC	
TYPE III BARRICADE	

ILLINOIS DEPARTMENT OF TRANSPORTATION  
**STAGE 4 CONSTRUCTION PLAN**  
**BOGOTA ROAD CONSTRUCTION**  
 FAP ROUTE 95 (IL RTE. 33)  
 SECTION (5,6)Y,RS-2,6BR-7  
 JASPER COUNTY

SCALE: VERT. \_\_\_\_\_  
 HORIZ. \_\_\_\_\_  
 DATE: 04/15/03

DRAWN BY: BISHOP  
 DESIGNED BY: COLBROOK  
 CHECKED BY: COLBROOK

**COMPUTER FILE NO.**  
 STAGE-17 - 50  
**PROJECT** 01256  
 2/26/10-FAV

GREENE & BRADFORD, INC.  
 OF SPRINGFIELD  
 CIVIL ENGINEERS  
 1001 N. UNIVERSITY AVENUE  
 SPRINGFIELD, ILLINOIS 62761  
 (217) 522-1100 FAX (217) 522-1101  
 WWW.GREENE-AND-BRADFORD.COM

REVISIONS	
NAME	DATE