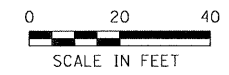
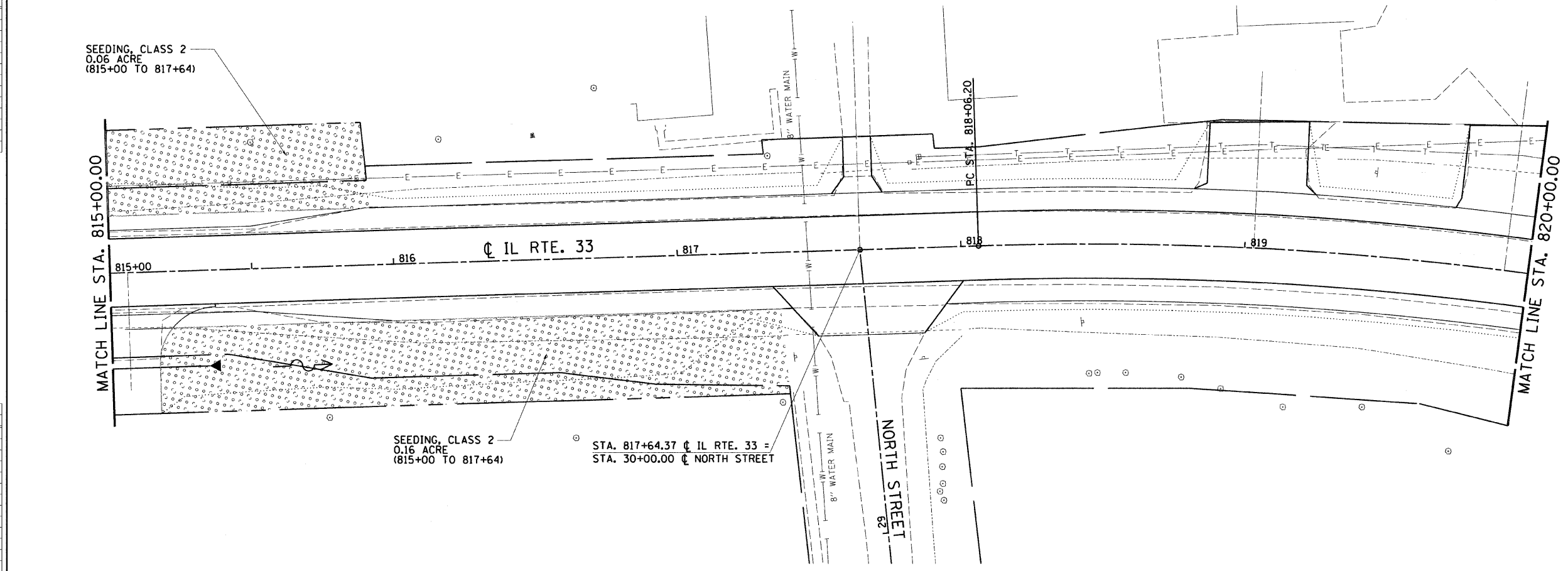


DESIGN		
INT.	DATE	REASON

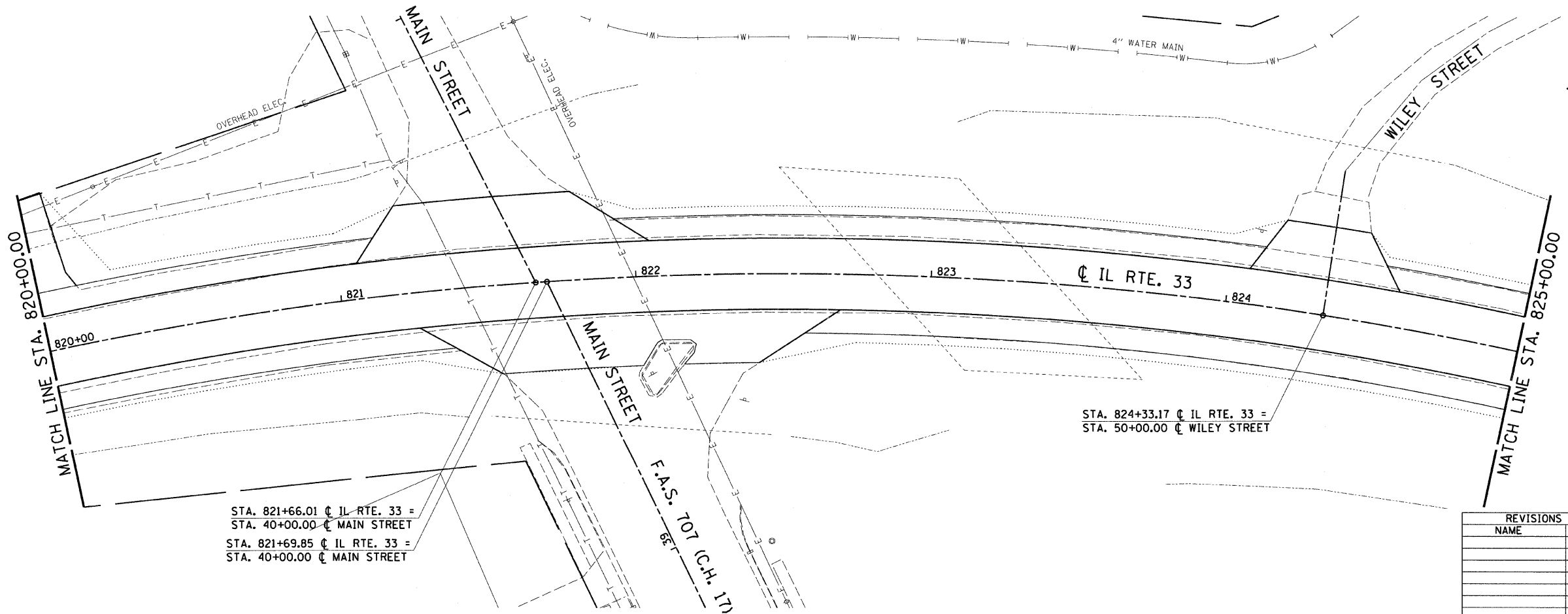
F.A.P. RTE.	SECTION	COUNTY	TOTAL SHEETS	SHEET NO.
95	.	JASPER	546	144
STA. 815+00.00 TO STA. 825+00.00				
FED. ROAD DIST. NO. ILLINOIS FED. AID PROJECT				
*(5,6)Y,RS-2,6BR-7				
CONTRACT NO. 94437				



- LEGEND**
- INLET AND PIPE PROTECTION
  - TEMPORARY DITCH CHECK
  - PERIMETER EROSION BARRIER
  - SEEDING, CLASS 1
  - SEEDING, CLASS 2
  - EROSION CONTROL BLANKET
  - TURF REINFORCEMENT MAT



PLOTS & CHECKS		
INT.	DATE	REASON



CHECKS		
INT.	DATE	REASON

REVISIONS	
NAME	DATE

ILLINOIS DEPARTMENT OF TRANSPORTATION  
**EROSION AND SEDIMENT CONTROL PLANS**  
 FAP ROUTE 95 (IL RTE. 33)  
 SECTION (5,6)Y,RS-2,6BR-7  
 JASPER COUNTY

SCALE: VERT. \_\_\_\_\_  
 HORIZ. \_\_\_\_\_  
 DATE: 09/16/02

	GREENE & BRADFORD, INC. ENGINEERS & SURVEYORS 1000 1/2 NORTH WASHINGTON STREET SPRINGFIELD, ILLINOIS 62761 PHONE: 217-265-5557 FAX: 217-265-5558	DRAWN BY: BISHOP DESIGNED BY: COLBROOK CHECKED BY: COLBROOK
	COMPUTER FILE NO. EC-06 - 20	PROJECT 01256 2/26/10-FAV