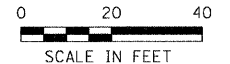
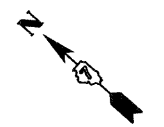


DESIGN		
INT.	DATE	REASON

PLOTS & CHECKS		
INT.	DATE	REASON

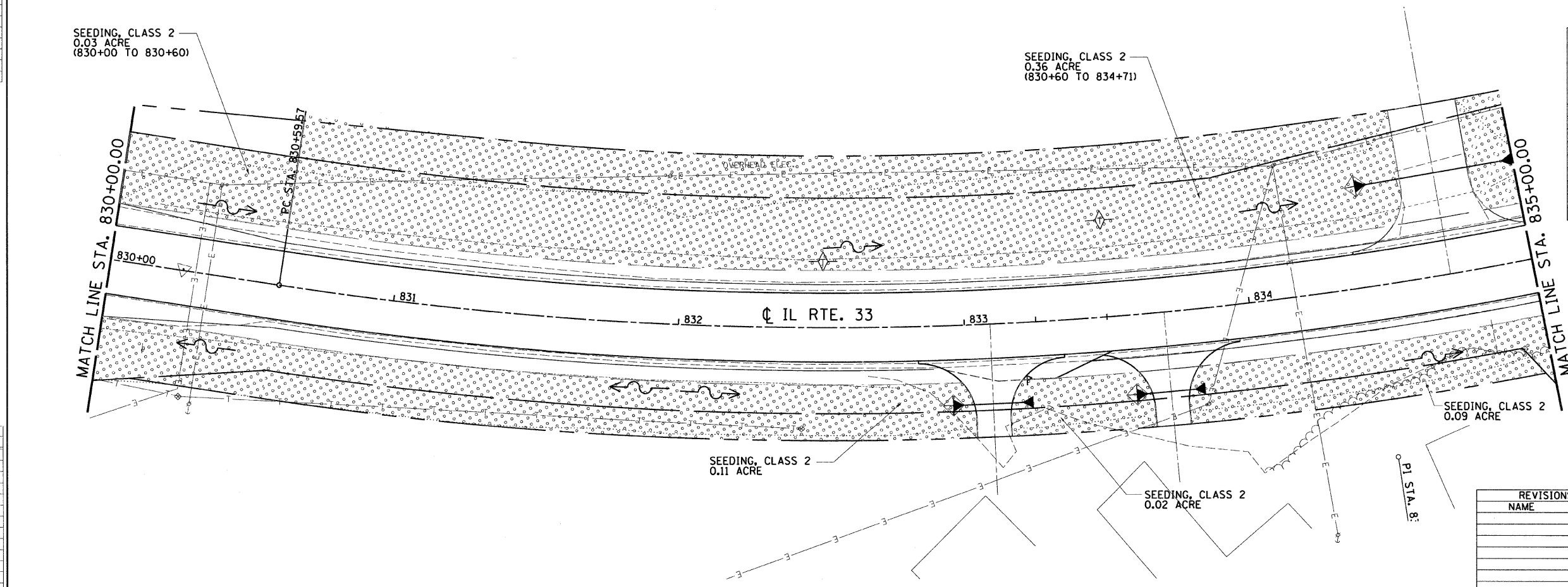
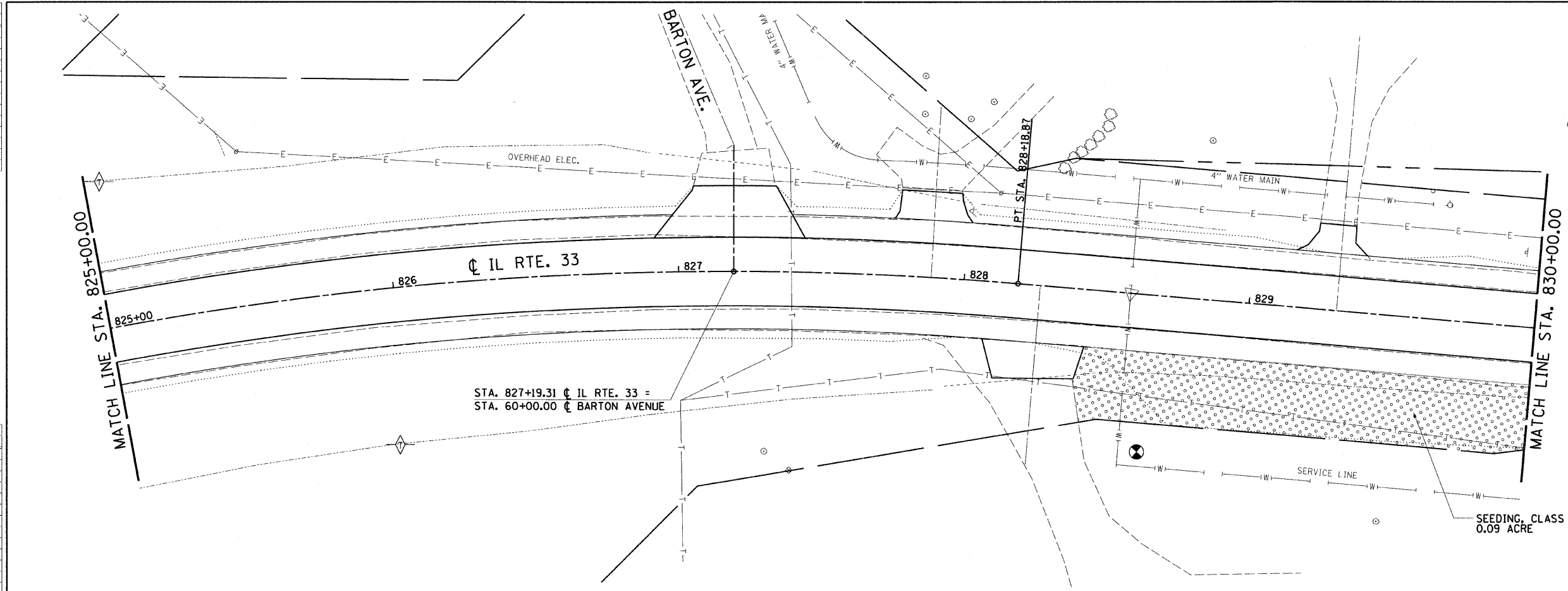
CHECKS		
INT.	DATE	REASON

F.A.P. RTE.	SECTION	COUNTY	TOTAL SHEETS	SHEET NO.
95	*	JASPER	546	145
STA. 825+00.00 TO STA. 835+00.00				
FED. ROAD DIST. NO. ILLINOIS FED. AID PROJECT				
*15,61Y,RS-2,6BR-7				
CONTRACT NO. 94437				



LEGEND

- INLET AND PIPE PROTECTION
- TEMPORARY DITCH CHECK
- PERIMETER EROSION BARRIER
- SEEDING, CLASS 1
- SEEDING, CLASS 2
- EROSION CONTROL BLANKET
- TURF REINFORCEMENT MAT



EROSION CONTROL		
LOCATION	TEMPORARY DITCH CHECKS	INLET AND PIPE PROTECTION
	FOOT	EACH
STA. 825+06, LT.	10	
STA. 826+00, RT.	10	
STA. 832+50, LT.	10	
STA. 832+95, RT.		1
STA. 833+50, LT.	10	
STA. 833+58, RT.		1
STA. 834+44, LT.		1
TOTALS	40	3

ILLINOIS DEPARTMENT OF TRANSPORTATION
EROSION AND SEDIMENT CONTROL PLANS
 FAP ROUTE 95 (IL RTE. 33)
 SECTION (5,6)Y,RS-2,6BR-7
 JASPER COUNTY

SCALE: VERT. _____
 HORIZ. _____
 DATE: 09/16/02

DRAWN BY: BISHOP
 DESIGNED BY: COLBROOK
 CHECKED BY: COLBROOK

GREENE & BRADFORD, INC.
 OF SPRINGFIELD

COMPUTER FILE NO.
 EC-07 - 20

PROJECT 01256
 2/26/10-FAV

REVISIONS	
NAME	DATE