

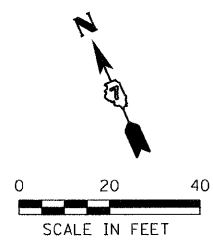
DESIGN		
INT.	DATE	REASON

PLOTS & CHECKS		
INT.	DATE	REASON

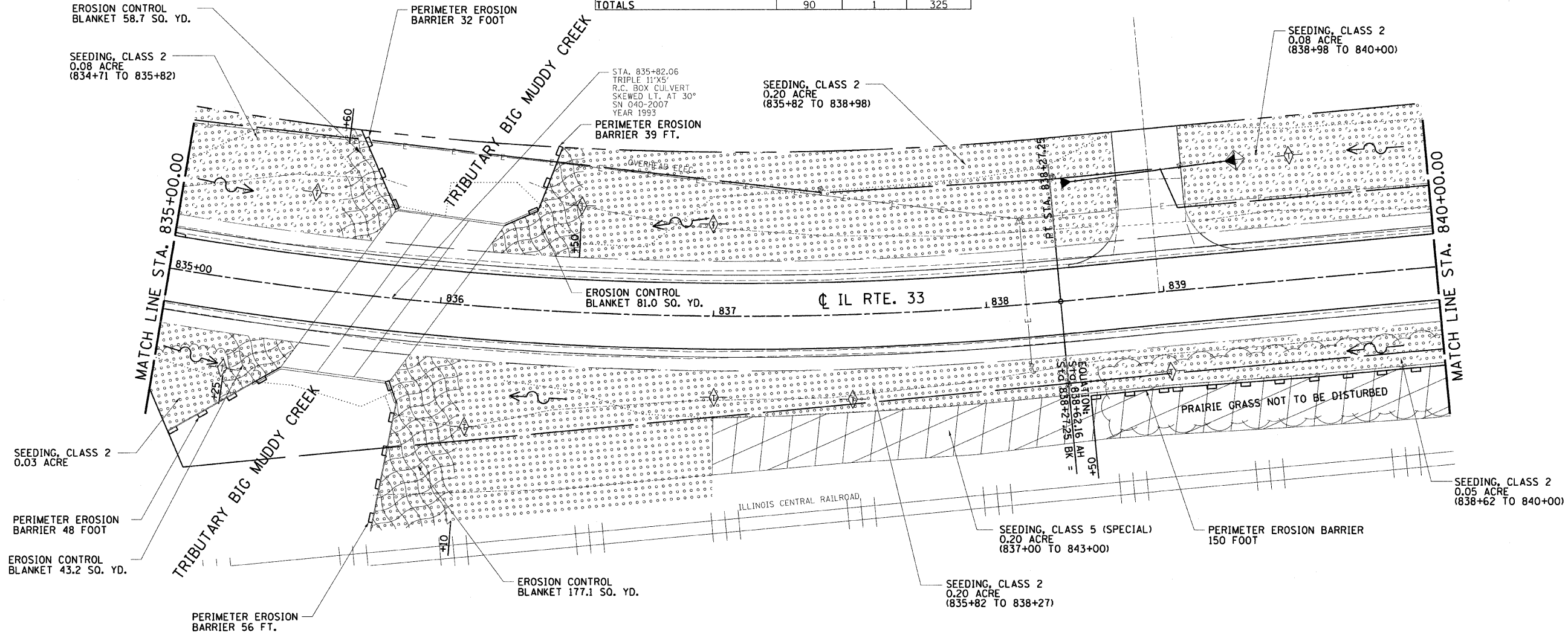
CHECKS		
INT.	DATE	REASON

LOCATION	EROSION CONTROL		
	TEMPORARY DITCH CHECKS	INLET AND PIPE PROTECTION	PERIMETER EROSION BARRIER
	FOOT	EACH	FOOT
STA. 835+25, RT.	10		
STA. 835+50, LT.	10		
STA. 836+10, RT.	10		
STA. 836+50, LT.	10		
STA. 837+00, LT.	10		
STA. 837+00, RT.	10		
STA. 837+50, RT.	10		
STA. 839+00, RT.	10		
STA. 839+30, LT.		1	
STA. 839+50, LT.	10		
STA. 835+82.06 (SN 040-2007)			175
STA. 838+70, RT. TO			150
STA. 840+00, RT.			
TOTALS	90	1	325

- LEGEND**
- INLET AND PIPE PROTECTION
 - TEMPORARY DITCH CHECK
 - PERIMETER EROSION BARRIER
 - SEEDING, CLASS 1
 - SEEDING, CLASS 2
 - SEEDING, CLASS 5 (SPECIAL)
 - EROSION CONTROL BLANKET
 - TURF REINFORCEMENT MAT



F.A.P. RTE.	SECTION	COUNTY	TOTAL SHEETS	SHEET NO.
95		JASPER	546	146
STA. 835+00.00 TO STA. 840+00.00				
FED. ROAD DIST. NO. ILLINOIS FED. AID PROJECT				
*15,61Y,RS-2,6BR-7				
CONTRACT NO. 94437				



ILLINOIS DEPARTMENT OF TRANSPORTATION
EROSION AND SEDIMENT CONTROL PLANS
 FAP ROUTE 95 (IL RTE. 33)
 SECTION (5,6)Y,RS-2,6BR-7
 JASPER COUNTY

SCALE: VERT. _____
 HORIZ. _____
 DATE: 09/16/02

DESIGNED BY: BISHOP
 CHECKED BY: COLBROOK

COMPUTER FILE NO.
 EC-08 - 20
 PROJECT 01256
 2/26/10-FAV

GREENE & BRADFORD, INC.
 OF SPRINGFIELD
 REGISTERED PROFESSIONAL ENGINEERS
 STATE OF ILLINOIS
 LICENSE NO. 1201-0001

REVISIONS	
NAME	DATE
MDS	9/3/09
ADD SEED, CL 5	