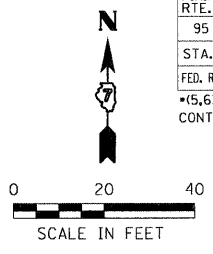


DESIGN		
INT.	DATE	REASON

PLOTS & CHECKS		
INT.	DATE	REASON

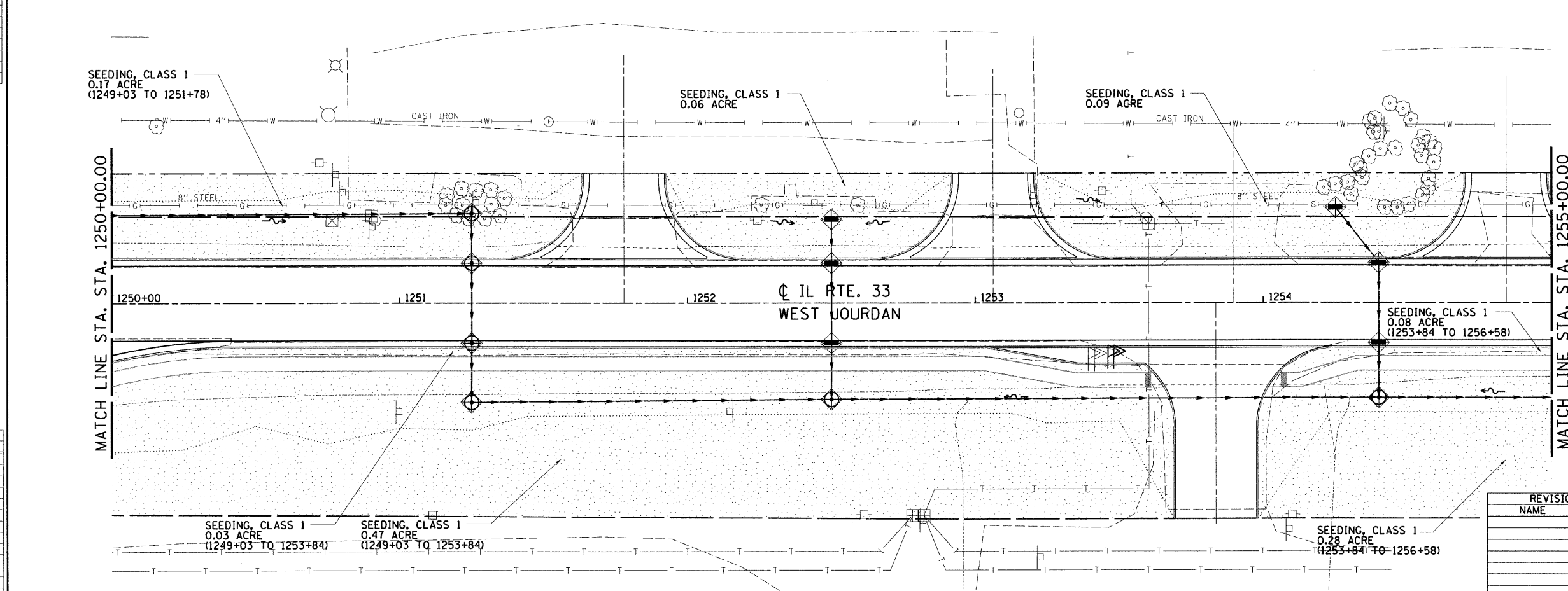
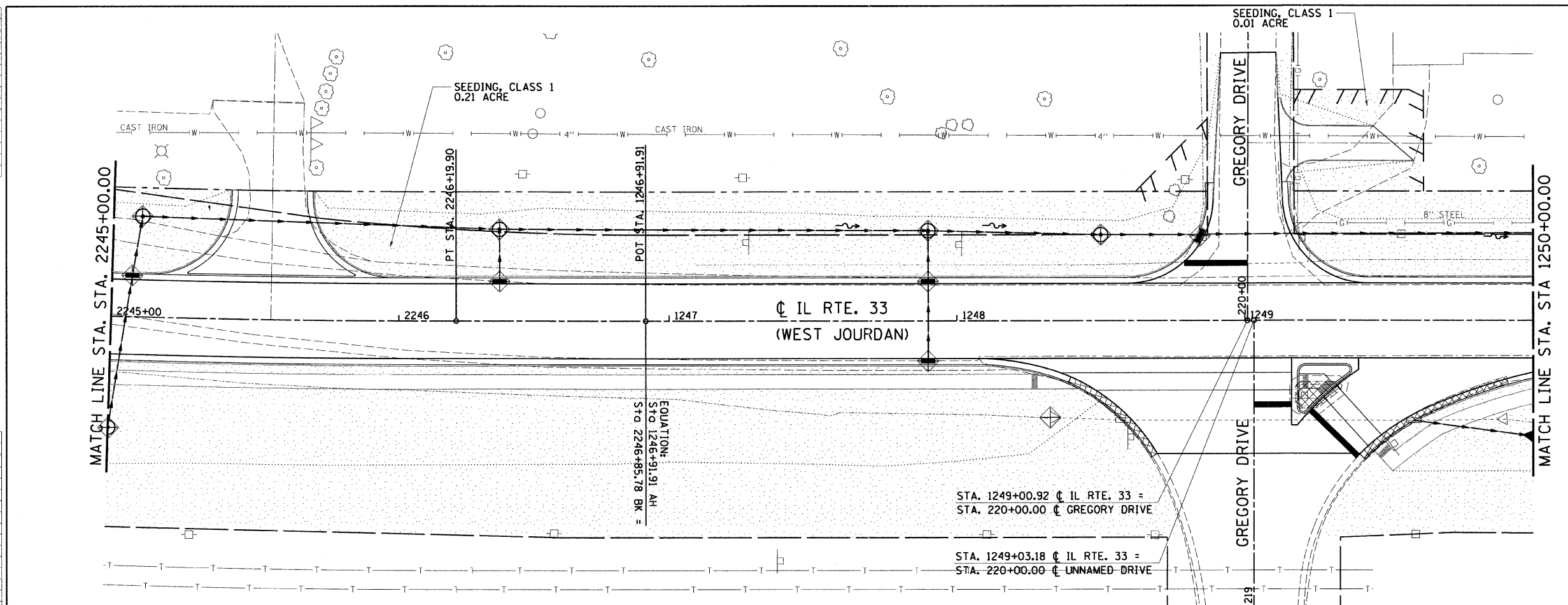
CHECKS		
INT.	DATE	REASON

F.A.P. RTE.	SECTION	COUNTY	TOTAL SHEETS	SHEET NO.
95		JASPER	546	166
STA. 2245+00.00 TO STA. 1255+00.00				
FED. ROAD DIST. NO. ILLINOIS FED. AID PROJECT				
*15,61Y,RS-2,6BR-7				
CONTRACT NO. 94437				



**LEGEND**

- INLET AND PIPE PROTECTION
- TEMPORARY DITCH CHECK
- PERIMETER EROSION BARRIER
- SEEDING, CLASS 1
- SEEDING, CLASS 2



EROSION CONTROL	
LOCATION	INLET AND PIPE PROTECTION EACH
STA. 2245+05, 14' LT.	1
STA. 2245+10, LT.	1
STA. 2246+35, LT.	1
STA. 2246+35, 14' LT.	1
STA. 1247+90, 14' LT.	1
STA. 1247+90, LT.	1
STA. 1247+90, 14' RT.	1
STA. 1248+32, RT.	1
STA. 1248+50, LT.	1
STA. 1248+83.20, 30.1' LT.	1
STA. 1251+25, 14' LT.	1
STA. 1251+25, LT.	1
STA. 1251+25, RT.	1
STA. 1251+25, 14' RT.	1
STA. 1252+50, 14' LT.	1
STA. 1252+50, LT.	1
STA. 1252+50, RT.	1
STA. 1252+50, 14' RT.	1
STA. 1254+25, LT.	1
STA. 1254+40, 14' RT.	1
STA. 1254+40, RT.	1
STA. 1254+40, 14' RT.	1
<b>TOTALS</b>	<b>22</b>

ILLINOIS DEPARTMENT OF TRANSPORTATION  
**EROSION AND SEDIMENT CONTROL PLANS**  
 FAP ROUTE 95 (IL RTE. 33)  
 SECTION (5,6)Y,RS-2,6BR-7  
 JASPER COUNTY

SCALE: VERT. \_\_\_\_\_  
 HORIZ. \_\_\_\_\_  
 DATE: 09/16/02

DRAWN BY: BISHOP  
 DESIGNED BY: COLBROOK  
 CHECKED BY: COLBROOK

GREENE & BRADFORD, INC.  
 OF SPRINGFIELD

COMPUTER FILE NO.  
 EC-25 - 20  
 PROJECT 01256  
 2/26/10-FAV

REVISIONS	
NAME	DATE