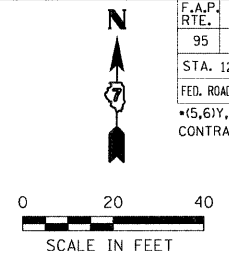


DESIGN		
INT.	DATE	REASON

PLOTS & CHECKS			
INT.	DATE	NO.	REASON

CHECKS		
INT.	DATE	REASON

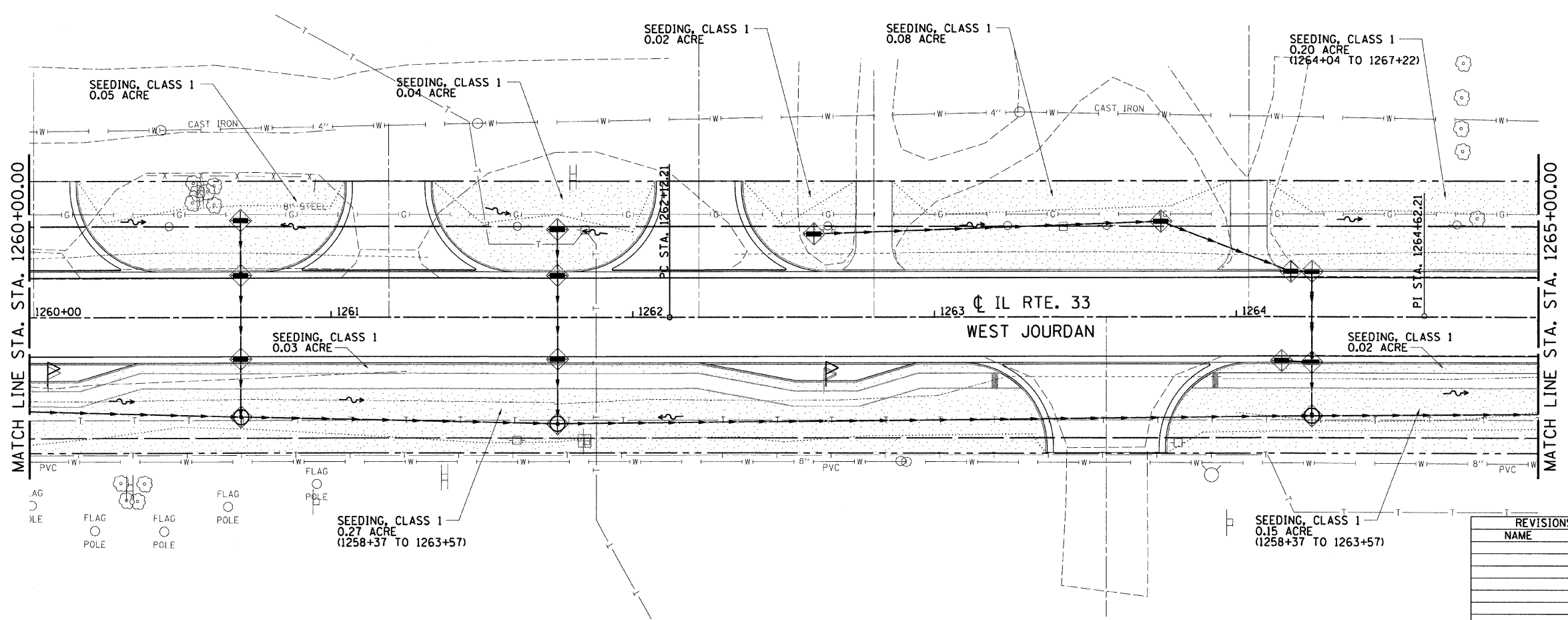
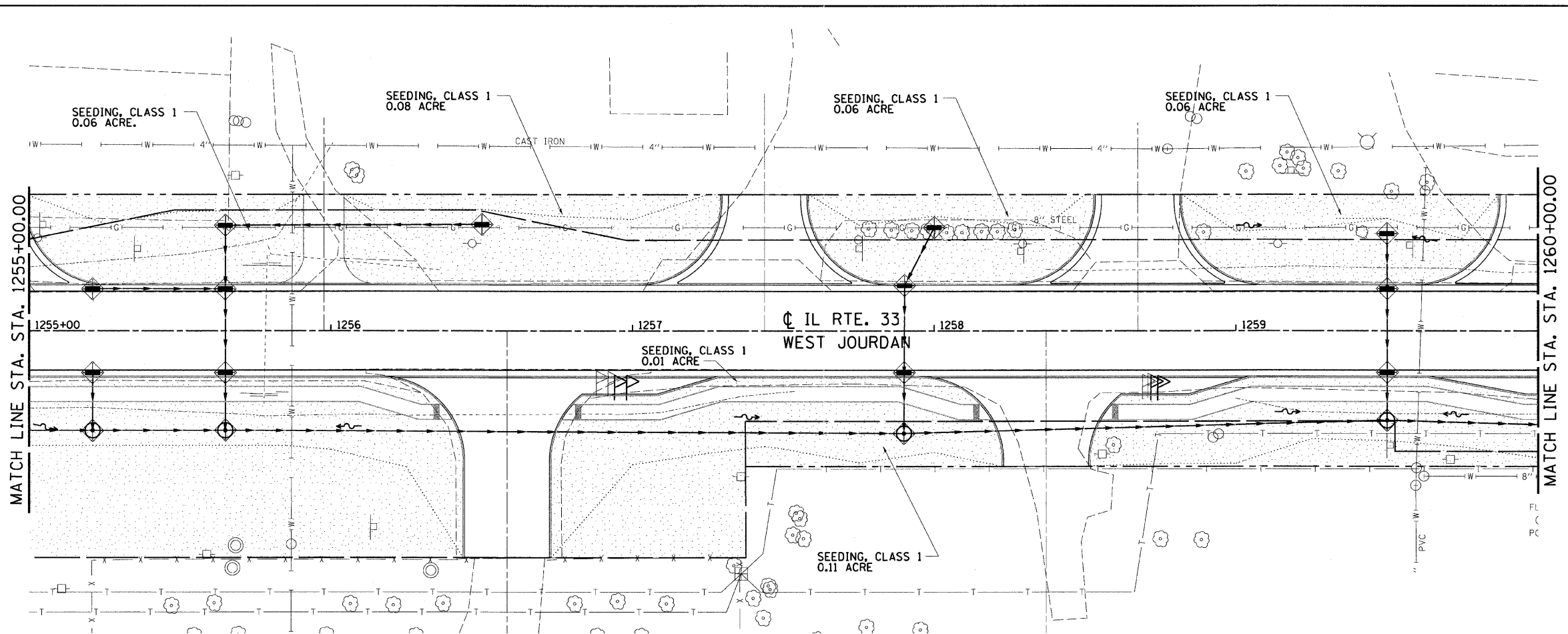
F.A.P. RTE.	SECTION	COUNTY	TOTAL SHEETS	SHEET NO.
95		JASPER	546	167
STA. 1255+00.00 TO STA. 1265+00.00				
FED. ROAD DIST. NO. ILLINOIS FED. AID PROJECT				
*15.61Y.RS-2.6BR-7				
CONTRACT NO. 94437				



**LEGEND**

- INLET AND PIPE PROTECTION
- TEMPORARY DITCH CHECK
- PERIMETER EROSION BARRIER
- SEEDING, CLASS 1
- SEEDING, CLASS 2

EROSION CONTROL	
LOCATION	INLET AND PIPE PROTECTION EACH
STA. 1255+21, 14' LT.	1
STA. 1255+21, 14' RT.	1
STA. 1255+65, 14' RT.	1
STA. 1255+65, 14' LT.	1
STA. 1255+65, RT.	1
STA. 1255+65, 14' RT.	1
STA. 1256+50, LT.	1
STA. 1257+90, 14' LT.	1
STA. 1257+90, RT.	1
STA. 1257+90, 14' RT.	1
STA. 1258+00, LT.	1
STA. 1259+50, 14' LT.	1
STA. 1259+50, LT.	1
STA. 1259+50, RT.	1
STA. 1259+50, 14' RT.	1
STA. 1260+70, 14' LT.	1
STA. 1260+70, LT.	1
STA. 1260+70, 14' RT.	1
STA. 1261+75, 14' LT.	1
STA. 1261+75, LT.	1
STA. 1261+75, RT.	1
STA. 1261+75, 14' RT.	1
STA. 1262+60, LT.	1
STA. 1263+75, LT.	1
STA. 1264+15, 14' RT.	1
STA. 1264+18, 14' LT.	1
STA. 1264+25, 14' LT.	1
STA. 1264+25, RT.	1
STA. 1264+25, 14' RT.	1
<b>TOTALS</b>	<b>31</b>



REVISIONS	
NAME	DATE

ILLINOIS DEPARTMENT OF TRANSPORTATION  
**EROSION AND SEDIMENT CONTROL PLANS**  
 FAP ROUTE 95 (IL RTE. 33)  
 SECTION (5.61Y,RS-2.6BR-7)  
 JASPER COUNTY

SCALE: VERT. \_\_\_\_\_  
 HORIZ. \_\_\_\_\_  
 DATE: 09/16/02

DRAWN BY: BISHOP  
 DESIGNED BY: COLBROOK  
 CHECKED BY: COLBROOK

COMPUTER FILE NO.  
 EC-26 - 20  
 PROJECT 01256  
 2/26/10-FAV

GREENE & BRADFORD, INC.  
 OF SPRINGFIELD  
 REGISTERED PROFESSIONAL ENGINEERS  
 LICENSE NO. 12121  
 PROFESSIONAL SEALING FIRM NO. 44-0018  
 PROFESSIONAL LAND SURVEYING CORPORATION  
 LICENSE NO. 12121, 12122, 12123, 12124, 12125, 12126, 12127, 12128, 12129, 12130, 12131, 12132, 12133, 12134, 12135, 12136, 12137, 12138, 12139, 12140, 12141, 12142, 12143, 12144, 12145, 12146, 12147, 12148, 12149, 12150, 12151, 12152, 12153, 12154, 12155, 12156, 12157, 12158, 12159, 12160, 12161, 12162, 12163, 12164, 12165, 12166, 12167, 12168, 12169, 12170, 12171, 12172, 12173, 12174, 12175, 12176, 12177, 12178, 12179, 12180, 12181, 12182, 12183, 12184, 12185, 12186, 12187, 12188, 12189, 12190, 12191, 12192, 12193, 12194, 12195, 12196, 12197, 12198, 12199, 12200