

| DESIGN | INT. | DATE | REASON |
|--------|------|------|--------|
| | | | |

| PLAN | DATE | BY | DATE |
|------|------|----|------|
| | | | |

| PLOTS & CHECKS | INT. | DATE | NO. | REASON |
|----------------|------|------|-----|--------|
| | | | | |

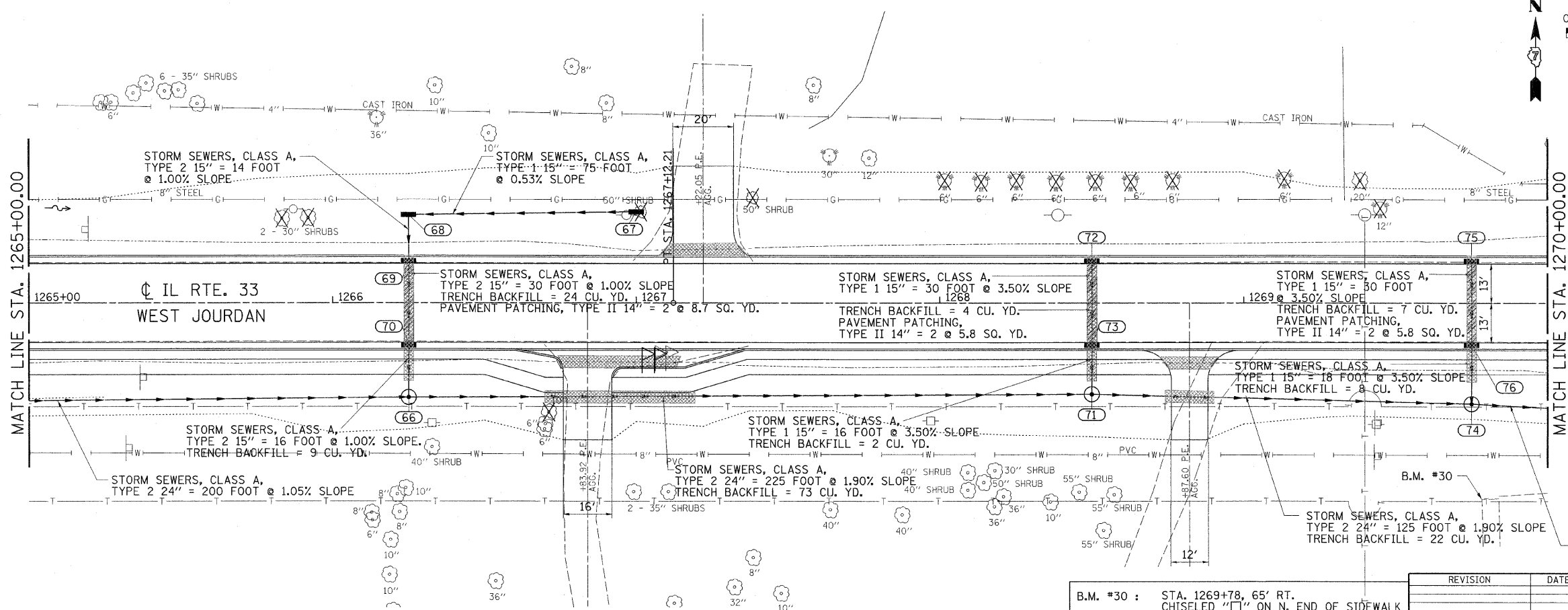
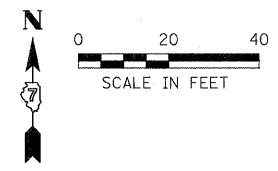
| PROFILE | DATE | BY | DATE |
|---------|------|----|------|
| | | | |

| CHECKS | INT. | DATE | REASON |
|--------|------|------|--------|
| | | | |

| F.A.P. RTE. | SECTION | COUNTY | TOTAL SHEETS | SHEET NO. |
|-------------|---------|--------|--------------|-----------|
| 95 | | JASPER | 546 | 176 |

STA. 1260+00.00 TO STA. 1270+00.00
 FED. ROAD DIST. NO. 1 ILLINOIS FED. AID PROJECT
 CONTRACT NO. 94437

- (66) STA. 1266+25, 31' RT. MANHOLES, TYPE A, 5'-DIAMETER, TYPE 8 GRATE
RIM = 533.50
INV. (E-W) = 526.12
INV. (N) = 528.36
- (67) STA. 1267+00, 30' LT. INLETS, TYPE A, TYPE 8 GRATE
RIM = 531.40
INV. = 529.40
- (68) STA. 1266+25, 29' LT. MANHOLES, TYPE A, 4'-DIAMETER, TYPE 8 GRATE
RIM = 533.80
INV. (E) = 529.00
INV. (S) = 528.96
- (69) STA. 1266+25, 15' LT. INLETS, TYPE B, TYPE 3 FRAME AND GRATE
RIM = 534.63
INV. (N-S) = 528.82
- (70) STA. 1266+25, 15' RT. INLETS, TYPE B, TYPE 3 FRAME AND GRATE
RIM = 534.63
INV. (N-S) = 528.52
- (71) STA. 1268+50, 30' RT. MANHOLES, TYPE A, 5'-DIAMETER, TYPE 8 GRATE
RIM = 526.00
INV. (W) = 521.85
INV. (E) = 518.52
INV. (N) = 522.31

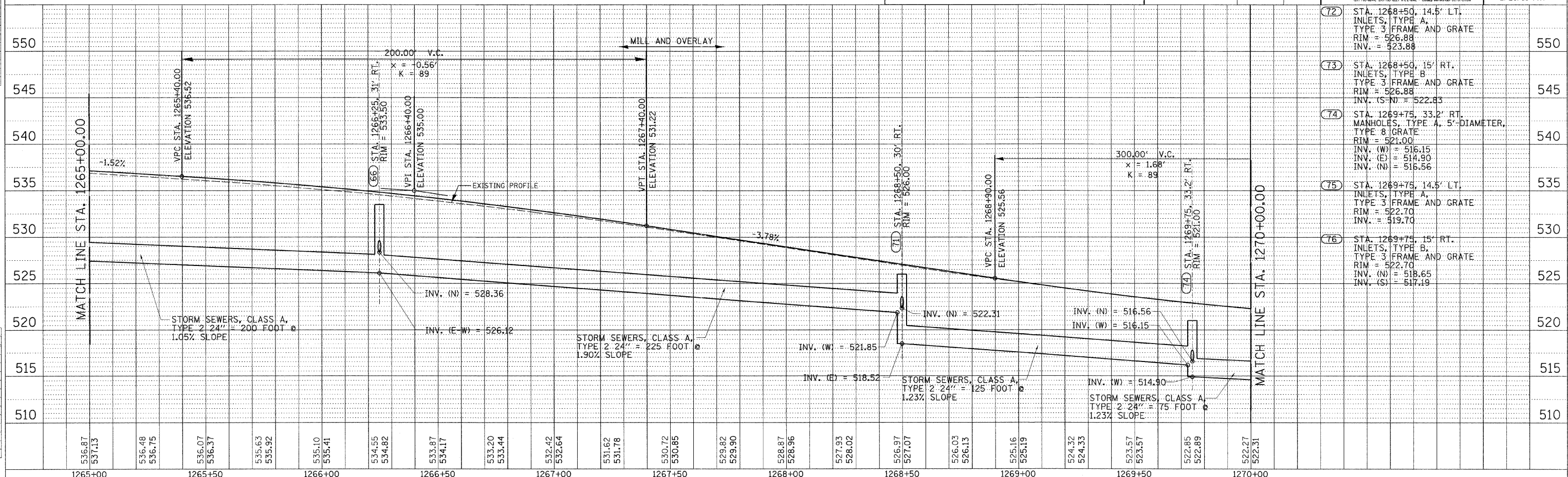


B.M. #30 : STA. 1269+78, 65' RT. CHISELED "□" ON N. END OF SIDEWALK ELEV. 522.06

| REVISION | DATE | BY |
|----------|------|----|
| | | |



COMPUTER FILE NO. DRAINAGE20-2.DGN
 PROJECT: 01256
 2/26/10-FAV



| STATION | ELEVATION | STATION | ELEVATION | STATION | ELEVATION | STATION | ELEVATION | STATION | ELEVATION | STATION | ELEVATION | STATION | ELEVATION | STATION | ELEVATION | STATION | ELEVATION | STATION | ELEVATION | | |
|---------|-----------|---------|-----------|---------|-----------|---------|-----------|---------|-----------|---------|-----------|---------|-----------|---------|-----------|---------|-----------|---------|-----------|---------|--------|
| 1265+00 | 536.87 | 1265+50 | 536.07 | 1266+00 | 535.10 | 1266+50 | 534.17 | 1267+00 | 532.42 | 1267+50 | 530.85 | 1268+00 | 528.87 | 1268+50 | 527.93 | 1269+00 | 525.16 | 1269+50 | 523.57 | 1270+00 | 522.27 |

100TPP-20 - 1:20 8/07/00