

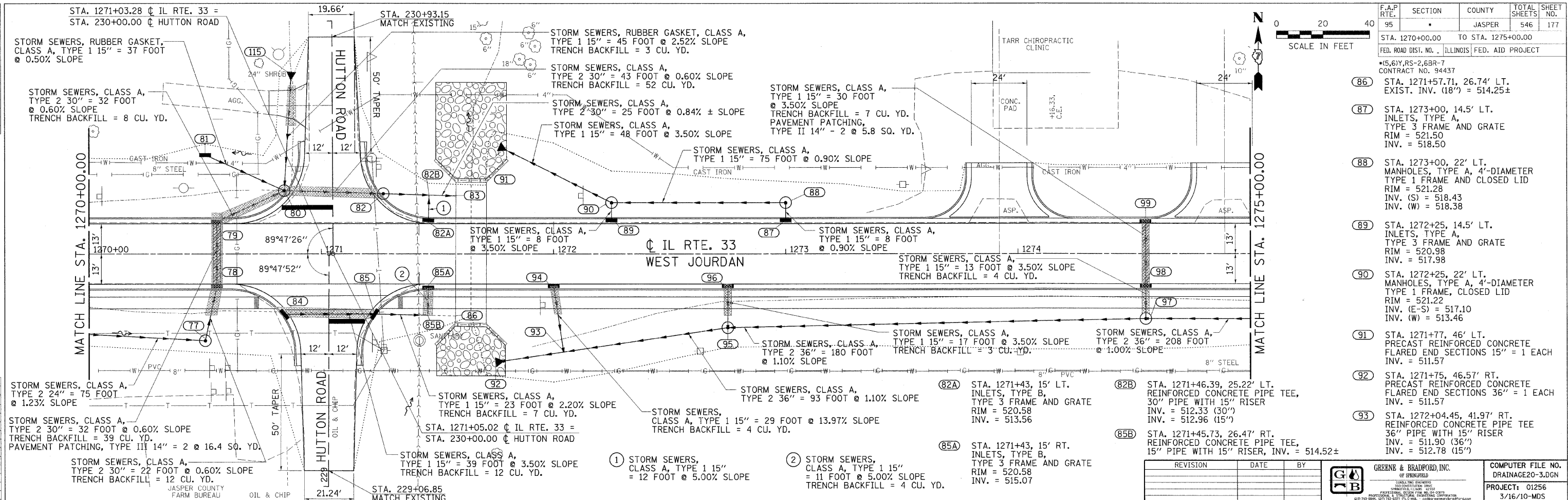
DESIGN	
INT.	REASON

PLAN	

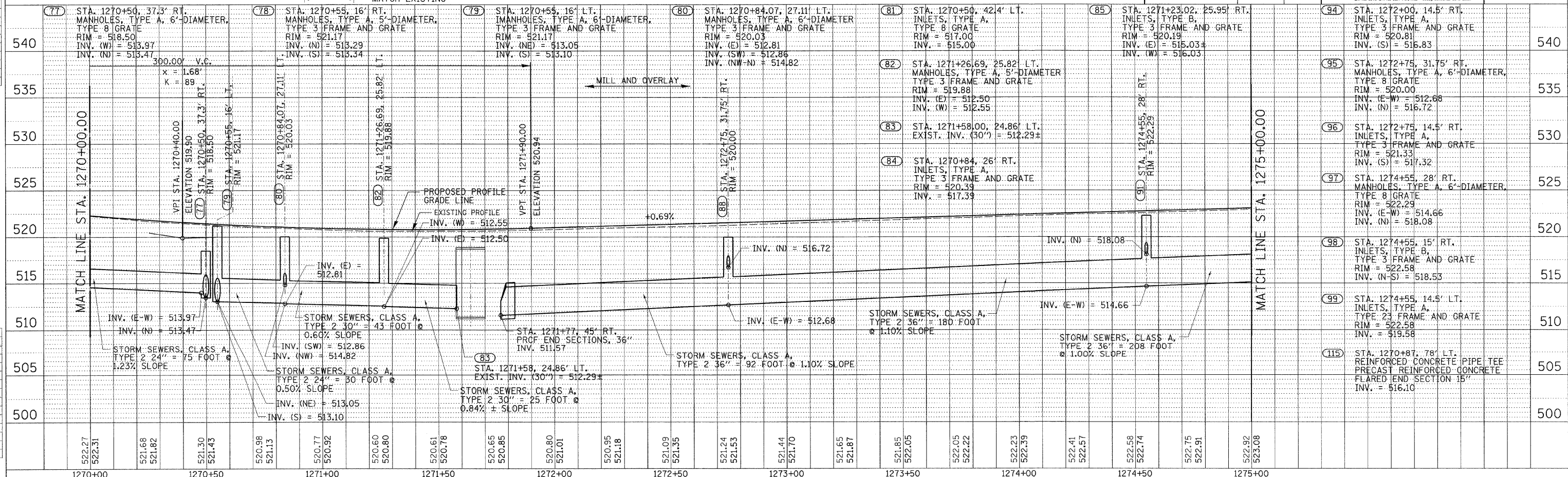
CHECKS	
INT.	REASON

PROFILE	

CHECKS	
INT.	REASON



F.A.P. RTE.	SECTION	COUNTY	TOTAL SHEETS	SHEET NO.
95		JASPER	546	177
STA. 1270+00.00 TO STA. 1275+00.00				
FED. ROAD DIST. NO. - ILLINOIS FED. AID PROJECT				
*15,617,RS-2,6BR-7 CONTRACT NO. 94437				
(86)	STA. 1271+57.71, 26.74' LT. EXIST. INV. (18") = 514.25±			
(87)	STA. 1273+00, 14.5' LT. INLETS, TYPE A, TYPE 3 FRAME AND GRATE RIM = 521.50 INV. = 518.50			
(88)	STA. 1273+00, 22' LT. MANHOLES, TYPE A, 4'-DIAMETER TYPE 1 FRAME AND CLOSED LID RIM = 521.28 INV. (S) = 518.43 INV. (W) = 518.38			
(89)	STA. 1272+25, 14.5' LT. INLETS, TYPE A, TYPE 3 FRAME AND GRATE RIM = 520.98 INV. = 517.98			
(90)	STA. 1272+25, 22' LT. MANHOLES, TYPE A, 4'-DIAMETER TYPE 1 FRAME, CLOSED LID RIM = 521.22 INV. (E-S) = 517.10 INV. (W) = 513.46			
(91)	STA. 1271+77, 46' LT. PRECAST REINFORCED CONCRETE FLARED END SECTIONS 15" = 1 EACH INV. = 511.57			
(92)	STA. 1271+75, 46.57' RT. PRECAST REINFORCED CONCRETE FLARED END SECTIONS 36" = 1 EACH INV. = 511.57			
(93)	STA. 1272+04.45, 41.97' RT. REINFORCED CONCRETE PIPE TEE 36" PIPE WITH 15" RISER INV. = 511.90 (36") INV. = 512.78 (15")			



1270+00	1270+50	1271+00	1271+50	1272+00	1272+50	1273+00	1273+50	1274+00	1274+50	1275+00
---------	---------	---------	---------	---------	---------	---------	---------	---------	---------	---------

100TPP-20 - 1:20 8/07/00