

DESIGN		
INT.	DATE	REASON

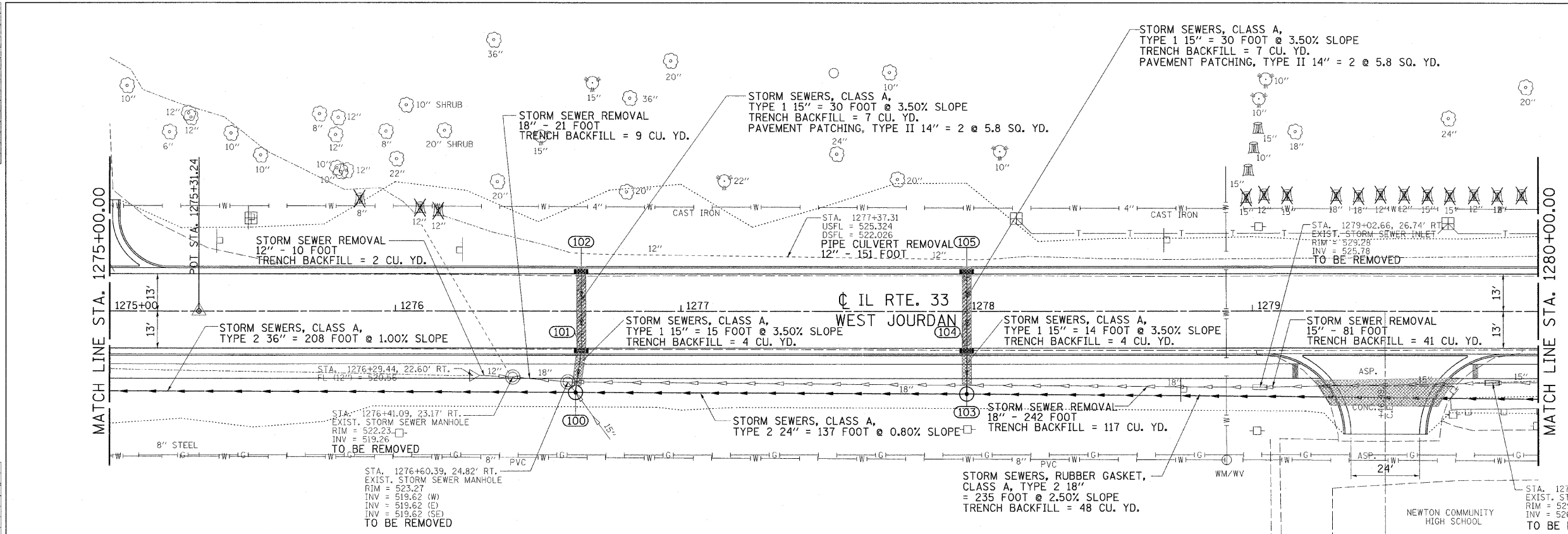
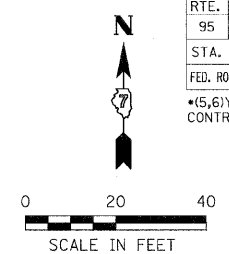
PLAN		
NO.	DATE	BY

CHECKS		
INT.	DATE	REASON

PROFILE		
NO.	DATE	BY

CHECKS		
INT.	DATE	REASON

F.A.P. RTE.	SECTION	COUNTY	TOTAL SHEETS	SHEET NO.
95	*	JASPER	546	178
STA. 1275+00.00 TO STA. 1280+00.00				
FED. ROAD DIST. NO. 1 ILLINOIS FED. AID PROJECT				
*15,61Y.RS-2,6BR-7 CONTRACT NO. 94437				



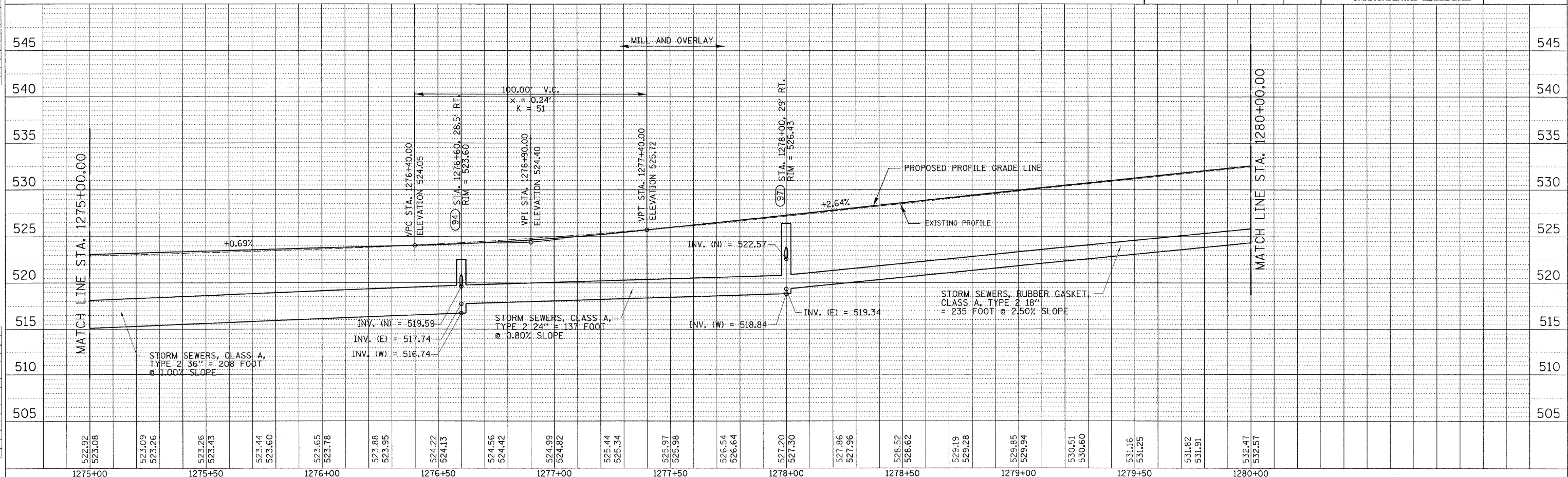
- 102 STA. 1276+65, 14.5' LT. INLETS, TYPE A, TYPE 3 FRAME AND GRATE RIM = 524.09 INV. = 521.09
- 101 STA. 1276+65, 15' RT. INLETS, TYPE B, TYPE 3 FRAME AND GRATE RIM = 524.09 INV. = 520.04
- 100 STA. 1276+63, 28.5' RT. MANHOLES, TYPE A, 6\"/>
- 105 STA. 1278+00, 14.5' LT. INLETS, TYPE A, TYPE 3 FRAME AND GRATE RIM = 527.11 INV. = 524.11
- 104 STA. 1278+00, 15' RT. INLETS, TYPE B, TYPE 3 FRAME AND GRATE RIM = 527.11 INV. = 523.06
- 103 STA. 1278+00, 29' RT. MANHOLES, TYPE A, 5\"/>

REVISION	DATE	BY

GREENE & BRADFORD, INC.
CONSULTING ENGINEERS
SPRINGFIELD, ILLINOIS 62761
PROFESSIONAL ENGINEER LICENSE NO. 121279
OFFICE: 1017 SOUTH STATE STREET, SPRINGFIELD, ILLINOIS 62761
PHONE: (217) 223-1111 FAX: (217) 223-1112

COMPUTER FILE NO.
DRAINAGE21-1.DGN

PROJECT: 01256
2/26/10-FAV



1275+00	1275+05	1276+00	1276+05	1277+00	1277+05	1278+00	1278+05	1279+00	1279+05	1280+00
---------	---------	---------	---------	---------	---------	---------	---------	---------	---------	---------