

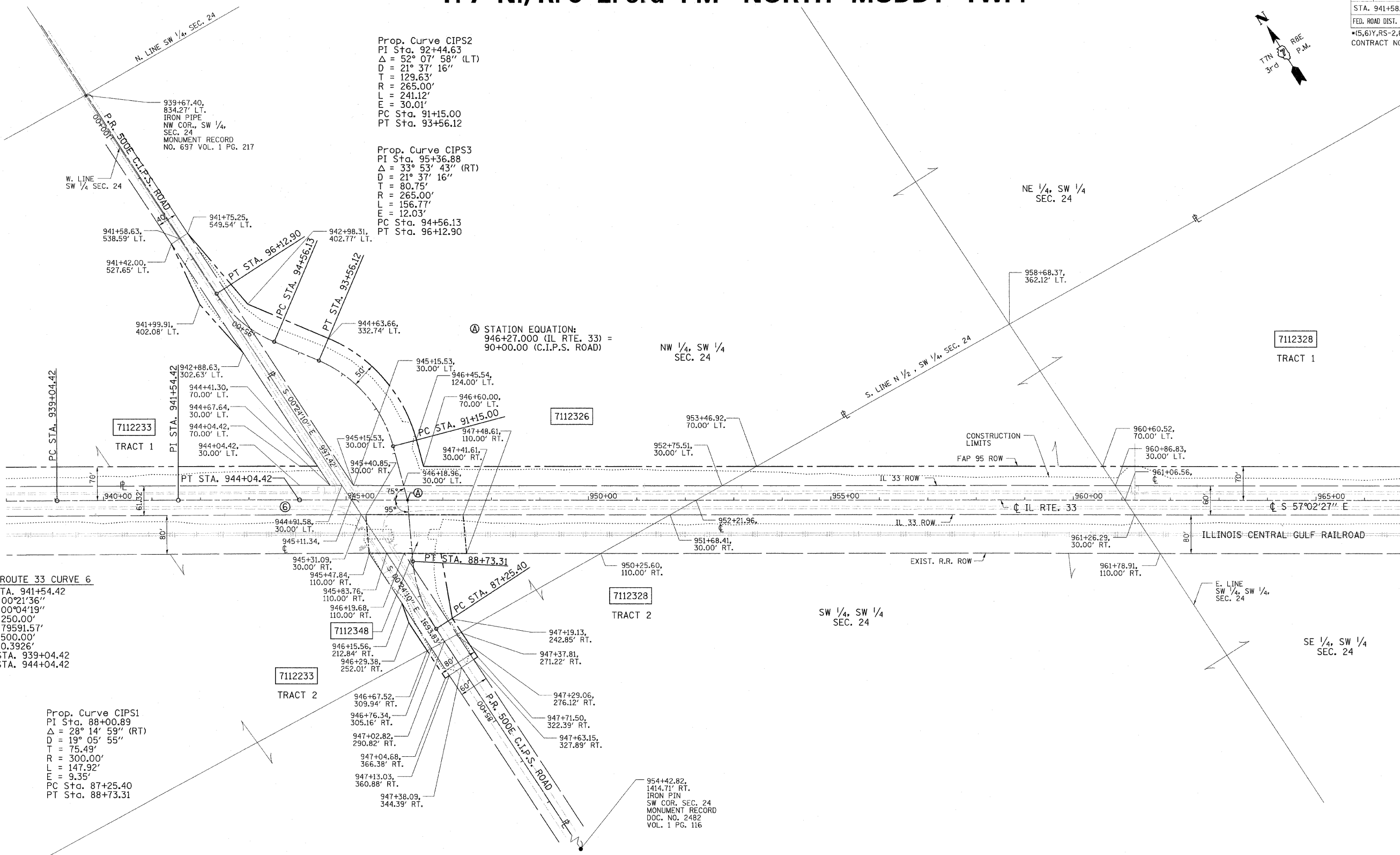
# T. 7 N., R. 8 E. 3rd PM NORTH MUDDY TWP.

F.A.P. RTE.	SECTION	COUNTY	TOTAL SHEETS	SHEET NO.
95		JASPER	546	192
STA. 941+58.63		TO STA. 953+46.92		
FED. ROAD DIST. NO.		ILLINOIS	FED. AID PROJECT	
*(5,6)Y, RS-2, 6BR-7		CONTRACT NO. 94437		



REVISION	DATE	NAME
PRELIMINARY SUBMITTAL	06/15/05	BISHOP
PER IDOT COMMENTS	12/01/05	BISHOP
PER IDOT COMMENTS	08/18/06	JAMESON
PER IDOT COMMENTS	02/01/08	BOTT

FILENAME: J:\01256.DRAWINGS\ACTIVE R.O.W\ROWPLAN12r-bv.dgn  
 PLOT DATE: 8/23/2010 15:42:02 PM



**SBI ROUTE 33 CURVE 6**  
 PI STA. 941+54.42  
 $\Delta = 00^{\circ}21'36''$   
 $D = 00^{\circ}04'19''$   
 $T = 250.00'$   
 $R = 79591.57'$   
 $L = 500.00'$   
 $E = 0.3926'$   
 PT STA. 939+04.42  
 PC STA. 944+04.42

**Prop. Curve CIPS1**  
 PI Sta. 88+00.89  
 $\Delta = 28^{\circ}14'59''$  (RT)  
 $D = 19^{\circ}05'55''$   
 $T = 75.49'$   
 $R = 300.00'$   
 $L = 147.92'$   
 $E = 9.35'$   
 PC Sta. 87+25.40  
 PT Sta. 88+73.31

**Prop. Curve CIPS2**  
 PI Sta. 92+44.63  
 $\Delta = 52^{\circ}07'58''$  (LT)  
 $D = 21^{\circ}37'16''$   
 $T = 129.63'$   
 $R = 265.00'$   
 $L = 241.12'$   
 $E = 30.01'$   
 PC Sta. 91+15.00  
 PT Sta. 93+56.12

**Prop. Curve CIPS3**  
 PI Sta. 95+36.88  
 $\Delta = 33^{\circ}53'43''$  (RT)  
 $D = 21^{\circ}37'16''$   
 $T = 80.75'$   
 $R = 265.00'$   
 $L = 156.77'$   
 $E = 12.03'$   
 PC Sta. 94+56.13  
 PT Sta. 96+12.90

STATION EQUATION:  
 $946+27.000$  (IL RTE. 33) =  
 $90+00.000$  (C.I.P.S. ROAD)

CONTRACT NO. 94437

- FIELD BOOK NO. ----  
 (R) RECORDED DISTANCE
- - IRON PIN
  - - BRASS MONUMENT
  - - ROW MARKER
  - ▣ - CONCRETE MONUMENT
  - - STEEL POST
  - - IRON PIPE
  - - CONCRETE POST
  - ▲ - RAILROAD SPIKE
  - ▲ - NAIL
  - - TEMP. CONST. EASEMENT
  - - PERM. EASEMENT

**UTILITIES:**  
 TELEPHONE - MONTROSE MUTUAL TELEPHONE  
 VERIZON NORTH, INC.  
 GAS - AMEREN CIPS  
 ELECTRICITY - AMEREN CIPS  
 WATER - EJ WATER CORPORATION  
 T.V. CABLE -

PARCEL	OWNER	AREA TAKEN		EASEMENT	REM. AREA	INST	RECORDED				EXCESS	
		ADD	EXIST.				MICRO FILM NO.	DATE	BOOK	PAGE	AREA	SOLD
7112326	PEOPLES STATE BANK OF NEWTON, ILLINOIS TRUSTEE TRUST #92-2	2.1050 AC	1.2612 AC	-	74.63 AC	-	-	-	-	-	-	-
7112328	HETZER FARMS, INC.	2.2391 AC	3.3228 AC	-	75.08 AC	-	-	-	-	-	-	-
	TRACT 1	2.0820 AC	3.1363 AC	-		-	-	-	-	-	-	-
	TRACT 2	0.1571 AC	0.1865 AC	-		-	-	-	-	-	-	-

NOTE: BEARINGS ARE REFERENCED TO THE ILLINOIS STATE PLANE COORDINATE SYSTEM EAST ZONE DATUM OF 1983.

ILLINOIS DEPARTMENT OF TRANSPORTATION  
**RIGHT OF WAY PLAN**  
 FAP ROUTE 95 (IL RTE. 33)  
 SECTION (5,6)Y, RS-2, 6BR-7  
 JASPER COUNTY  
 JOB NO. R-97-012-01  
 STA. 941+58.63 TO STA. 953+46.92

SCALE: 1" = 100'

ILLINOIS DEPARTMENT OF TRANSPORTATION  
 DIVISION OF HIGHWAYS/DISTRICT 7

JOB NO. R-97-012-01