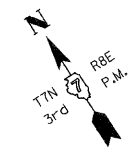
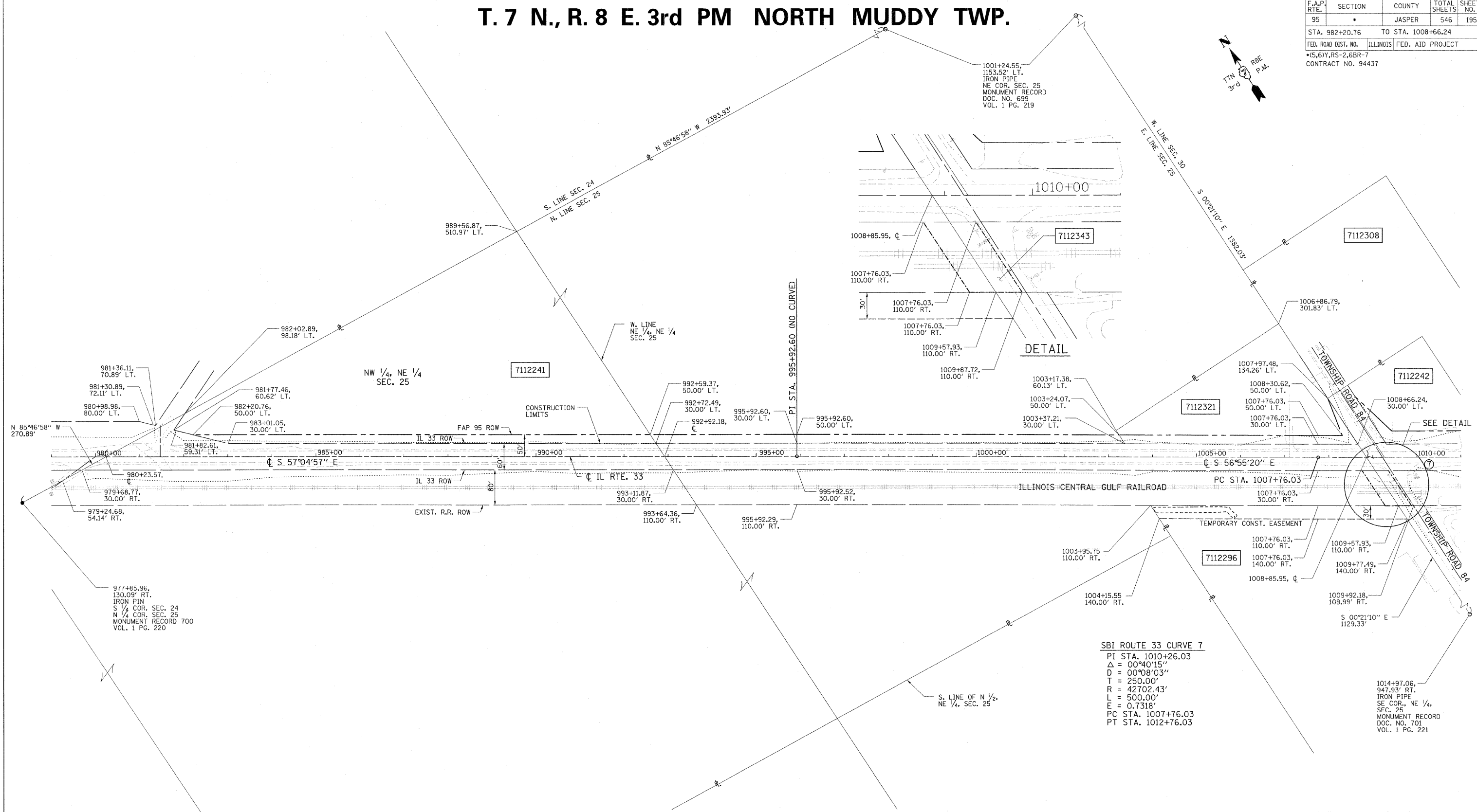


T. 7 N., R. 8 E. 3rd PM NORTH MUDDY TWP.

F.A.P. RTE.	SECTION	COUNTY	TOTAL SHEETS	SHEET NO.
95	*	JASPER	546	195
STA. 982+20.76		TO STA. 1008+66.24		
FED. ROAD DIST. NO.		ILLINOIS FED. AID PROJECT		
*5,61Y,RS-2,6BR-7		CONTRACT NO. 94437		



NAME	DATE	REVISION
BISHOP	06/15/05	PRELIMINARY SUBMITTAL
BISHOP	12/01/05	PER IDOT COMMENTS
JAMESON	08/18/06	PER IDOT COMMENTS
BOTT	02/01/08	PER IDOT COMMENTS
SUTHEARD	06/22/09	PER IDOT COMMENTS



DETAIL

SBI ROUTE 33 CURVE 7
 PI STA. 1010+26.03
 Δ = 00°40'15"
 D = 00°08'03"
 T = 250.00'
 R = 42702.43'
 L = 500.00'
 E = 0.7318'
 PC STA. 1007+76.03
 PT STA. 1012+76.03

FILENAME: J:\01256\DRAWINGS\ACTIVE R.O.W\ROWPLANS\rev.dgn
 PLOT DATE: 8/23/2011 15:54:55 PM

CONTRACT NO. 94437
 FIELD BOOK NO. ----
 (R) RECORDED DISTANCE

- - IRON PIN
- - BRASS MONUMENT
- ⊠ - ROW MARKER
- - CONCRETE MONUMENT
- ⊙ - STEEL POST
- - IRON PIPE
- ⊖ - CONCRETE POST
- ▲ - RAILROAD SPIKE
- △ - NAIL
- - TEMP. CONST. EASEMENT
- - - - PERM. EASEMENT

UTILITIES:
 TELEPHONE - MONTROSE MUTUAL TELEPHONE
 VERIZON NORTH, INC.
 GAS - AMEREN CIPS
 ELECTRICITY - AMEREN CIPS
 WATER - EJ WATER CORPORATION
 T.V. CABLE -

PARCEL	OWNER	AREA TAKEN		EASEMENT	REM. AREA	INST	RECORDED				EXCESS		
		ADD	EXIST.				MICRO FILM NO.	DATE	BOOK	PAGE	AREA	SOLD	
7112241	ROSCOE L. TREXLER, TRUSTEE	0.9504 AC	0.0000 AC	-	32.95 AC	-	-	-	-	-	-	-	-
7112296	WILLOW HILL GRAIN, INC.			0.3875 AC (TE)									
7112321	LEXIE E. KENNEDY, TRUSTEE	0.2645 AC	0.0000 AC	-	1.62 AC	-	-	-	-	-	-	-	-
7112343	ILLINOIS CENTRAL GULF RAILROAD			0.1098 AC (PE)									

NOTE: TEMPORARY EASEMENTS ARE NEEDED AS A WORK AREA.
 NOTE: BEARINGS ARE REFERENCED TO THE ILLINOIS STATE PLANE COORDINATE SYSTEM EAST ZONE DATUM OF 1983.

ILLINOIS DEPARTMENT OF TRANSPORTATION
RIGHT OF WAY PLAN
 FAP ROUTE 95 (IL RTE. 33)
 SECTION (5,6)Y, RS-2, 6BR-7
 JASPER COUNTY
 JOB NO. R-97-012-01
 STA. 982+20.76 TO STA. 1008+66.24

SCALE: 1" = 100'

SHEET 17 OF 33

ILLINOIS DEPARTMENT OF TRANSPORTATION
 DIVISION OF HIGHWAYS/DISTRICT 7

JOB NO. R-97-012-01