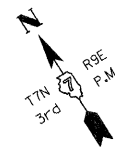


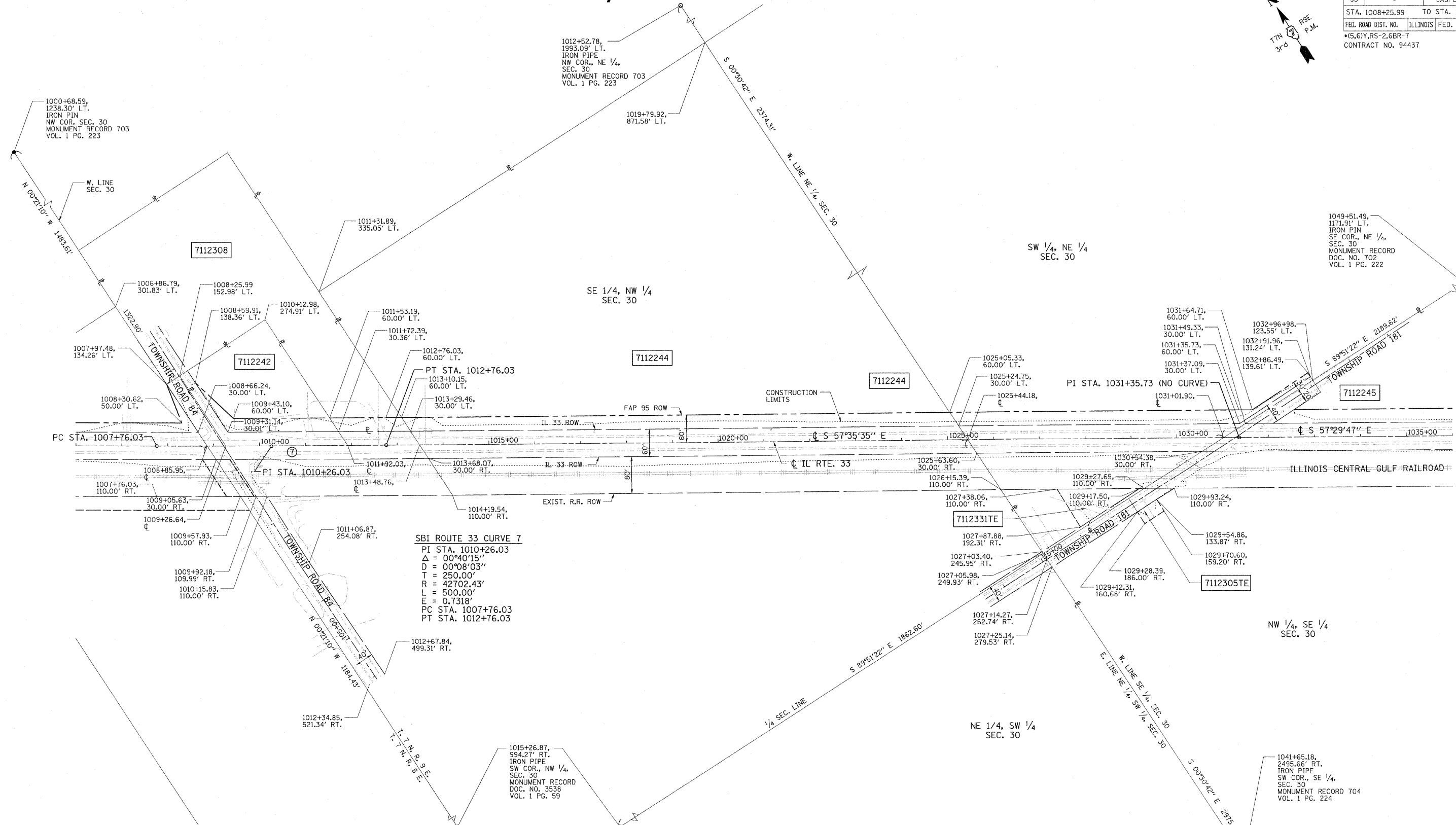
T. 7 N., R. 9 E. 3rd PM WADE TWP.

F.A.P. RTE.	SECTION	COUNTY	TOTAL SHEETS	SHEET NO.
95	*	JASPER	546	196
STA. 1008+25.99 TO STA. 1032+91.96		ILLINOIS FED. AID PROJECT		
FED. ROAD DIST. NO. (5,6)Y, RS-2, 6BR-7		CONTRACT NO. 94437		



NAME	DATE	REVISION
BISHOP	06/15/05	PRELIMINARY SUBMITTAL
BOTT	12/01/05	PER IDOT COMMENTS
BOTT	02/01/08	PER IDOT COMMENTS
SUTHEARD	06/22/09	PER IDOT COMMENTS
BOTT	11/01/10	PER IDOT COMMENTS

FILENAME: J:\0266\DRAWINGS\ACTIVE R.O.W\ROWPLAN196rev.dgn
 PLOT DATE: 8/23/2011 15:43 PM



CONTRACT NO. 94437
 FIELD BOOK NO. ----
 (R) RECORDED DISTANCE

- - IRON PIN
- - BRASS MONUMENT
- ⊞ - ROW MARKER
- - CONCRETE MONUMENT
- - STEEL POST
- - IRON PIPE
- - CONCRETE POST
- ▲ - RAILROAD SPIKE
- ▲ - NAIL
- - TEMP. CONST. EASEMENT
- - PERM. EASEMENT

UTILITIES:
 TELEPHONE - MONTROSE MUTUAL TELEPHONE
 VERIZON NORTH, INC.
 GAS - AMEREN CIPS
 ELECTRICITY - AMEREN CIPS
 WATER - EJ WATER CORPORATION
 T.V. CABLE -

PARCEL	OWNER	AREA TAKEN		EASEMENT	REM. AREA	INST	RECORDED				EXCESS	
		ADD	EXIST.				MICRO FILM NO.	DATE	BOOK	PAGE	AREA	SOLD
7112242	HAROLD D. LEWIS	0.1930 AC	0.2415 AC	-	0.84 AC	-	-	-	-	-	-	-
7112308	DONALD E. LEWIS	0.1072 AC	0.0000 AC	-	2.54 AC	-	-	-	-	-	-	-
7112305TE	FOLA R. BLACKMER, TRUSTEE	-	-	0.0346 AC	-	-	-	-	-	-	-	-
7112244	PEOPLE'S STATE BANK OF NEWTON, TRUSTEE	1.2991 AC	2.4474 AC	-	96.81 AC	-	-	-	-	-	-	-
7112331TE	WILLOW HILL GRAIN, INC.	-	-	0.1695 AC	-	-	-	-	-	-	-	-

NOTE: TEMPORARY EASEMENTS ARE NEEDED AS A WORK AREA.
 NOTE: BEARINGS ARE REFERENCED TO THE ILLINOIS STATE PLANE COORDINATE SYSTEM EAST ZONE DATUM OF 1983.

ILLINOIS DEPARTMENT OF TRANSPORTATION
RIGHT OF WAY PLAN
 FAP ROUTE 95 (IL RTE. 33)
 SECTION (5,6)Y, RS-2, 6BR-7
 JASPER COUNTY
 JOB NO. R-97-012-01
 STA. 1008+25.99 TO STA. 1032+91.96

SCALE: 1" = 100'
 SHEET 18 OF 33

ILLINOIS DEPARTMENT OF TRANSPORTATION
 DIVISION OF HIGHWAYS/DISTRICT 7

JOB NO. R-97-012-01