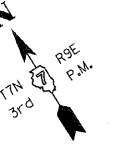
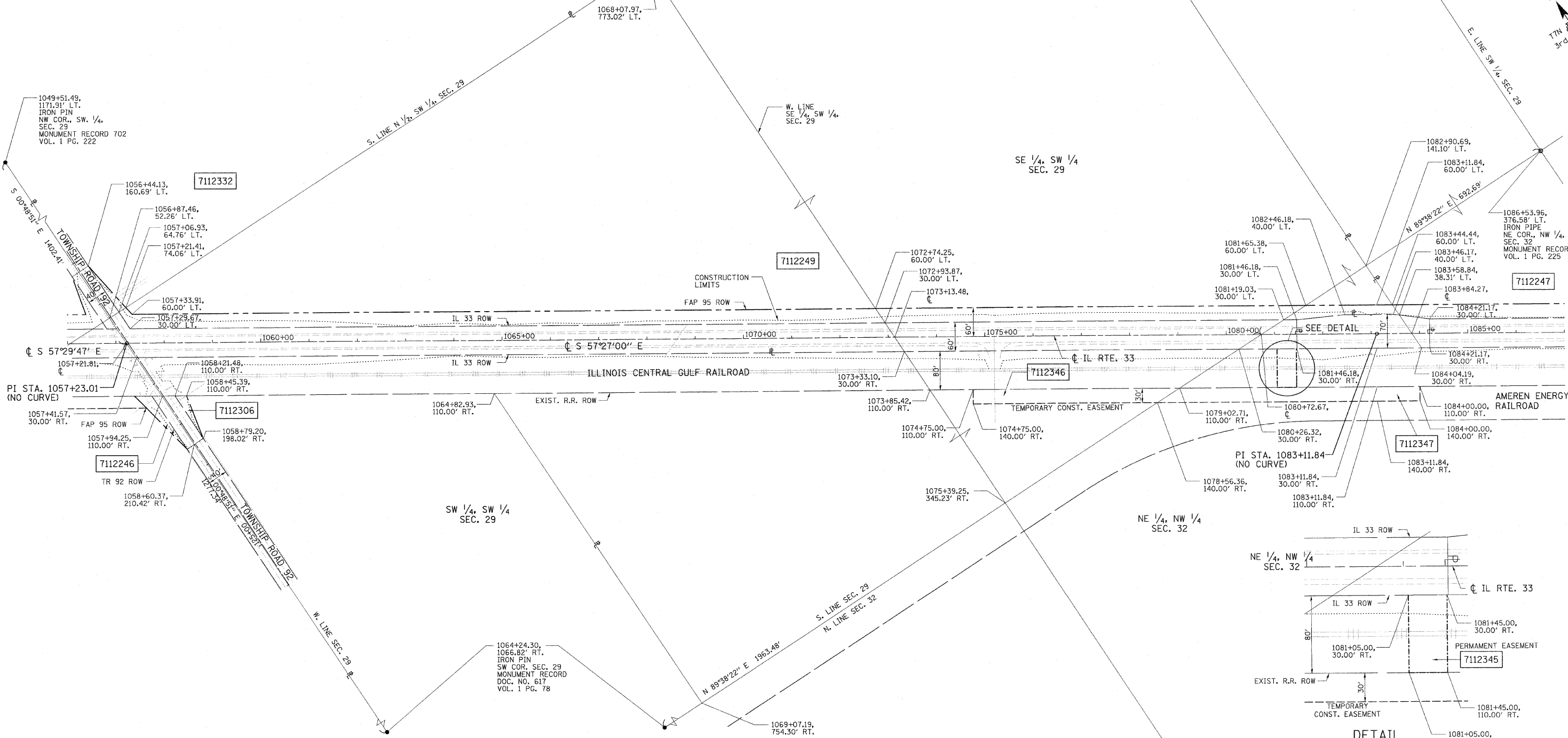


# T. 7 N., R. 9 E. 3rd PM WADE TWP.

F.A.P. RTE.	SECTION	COUNTY	TOTAL SHEETS	SHEET NO.
95		JASPER	546	198
STA. 1056+87.46 TO STA. 1084+04.19		ILLINOIS FED. AID PROJECT		
*(5,6)Y, RS-2, 6BR-7		CONTRACT NO. 94437		



REVISION	DATE	NAME
PRELIMINARY SUBMITTAL	06/15/05	BISHOP
PER IDOT COMMENTS	12/01/05	BOTT
PER IDOT COMMENTS	02/01/08	BOTT
PER IDOT COMMENTS	11/01/10	BOTT



FILENAME: J:\0256\DRAWINGS\ACTIVE R.O.W\ROWPLAN8r-ev.dgn  
 PLOT DATE: 8/23/2011 15:25 PM

DRAWN BY: BISHOP  
 WRITTEN BY: EMIRICK  
 CHECKED BY: BOTT  
 INSPECTED BY:

CONTRACT NO. 94437  
 FIELD BOOK NO. ----  
 (R) RECORDED DISTANCE  
 ● IRON PIN  
 ■ BRASS MONUMENT  
 □ ROW MARKER  
 ○ CONCRETE MONUMENT  
 ○ STEEL POST  
 ○ IRON PIPE  
 ○ CONCRETE POST  
 ○ RAILROAD SPIKE  
 △ NAIL  
 --- TEMP. CONST. EASEMENT  
 - - - PERM. EASEMENT

**UTILITIES:**  
 TELEPHONE - CHARTER COMMUNICATIONS  
 VERIZON NORTH, INC. MCI  
 GAS - AMEREN CIPS  
 ELECTRICITY - AMEREN CIPS  
 NORRIS ELECTRIC COOP  
 WATER - CITY OF NEWTON

PARCEL	OWNER	AREA TAKEN		EASEMENT	REM. AREA	INST	RECORDED				EXCESS	
		ADD	EXIST.				MICRO	FILM NO.	DATE	BOOK	PAGE	AREA
7112306	GLEN T. BRITTON AND GLENDA L. WAKEFIELD, CO-TRUSTEES	0.0242 AC	0.0586 AC	-	12.57 AC	-	-	-	-	-	-	-
7112249	GORDON O. WARFEL	1.7818 AC	3.3574 AC	-	35.96 AC	-	-	-	-	-	-	-
7112345	ILLINOIS CENTRAL GULF RAILROAD			0.0735 AC (PE)		-	-	-	-	-	-	-
7112346	ROYSTER - CLARK, INC., A KENTUCKY CORPORATION			0.2786 AC (TE)		-	-	-	-	-	-	-
7112347	AMEREN ENERGY RAILROAD			0.3584 AC (TE)		-	-	-	-	-	-	-

NOTE: BEARINGS ARE REFERENCED TO THE ILLINOIS STATE PLANE COORDINATE SYSTEM EAST ZONE DATUM OF 1983.

ILLINOIS DEPARTMENT OF TRANSPORTATION  
**RIGHT OF WAY PLAN**  
 FAP ROUTE 95 (IL RTE. 33)  
 SECTION (5,6)Y, RS-2, 6BR-7  
 JASPER COUNTY  
 JOB NO. R-97-012-01  
 STA. 1056+87.46 TO STA. 1084+04.19

SCALE: 1" = 100'

ILLINOIS DEPARTMENT OF TRANSPORTATION  
 DIVISION OF HIGHWAYS/DISTRICT 7

SHEET 20 OF 33

JOB NO. R-97-012-01