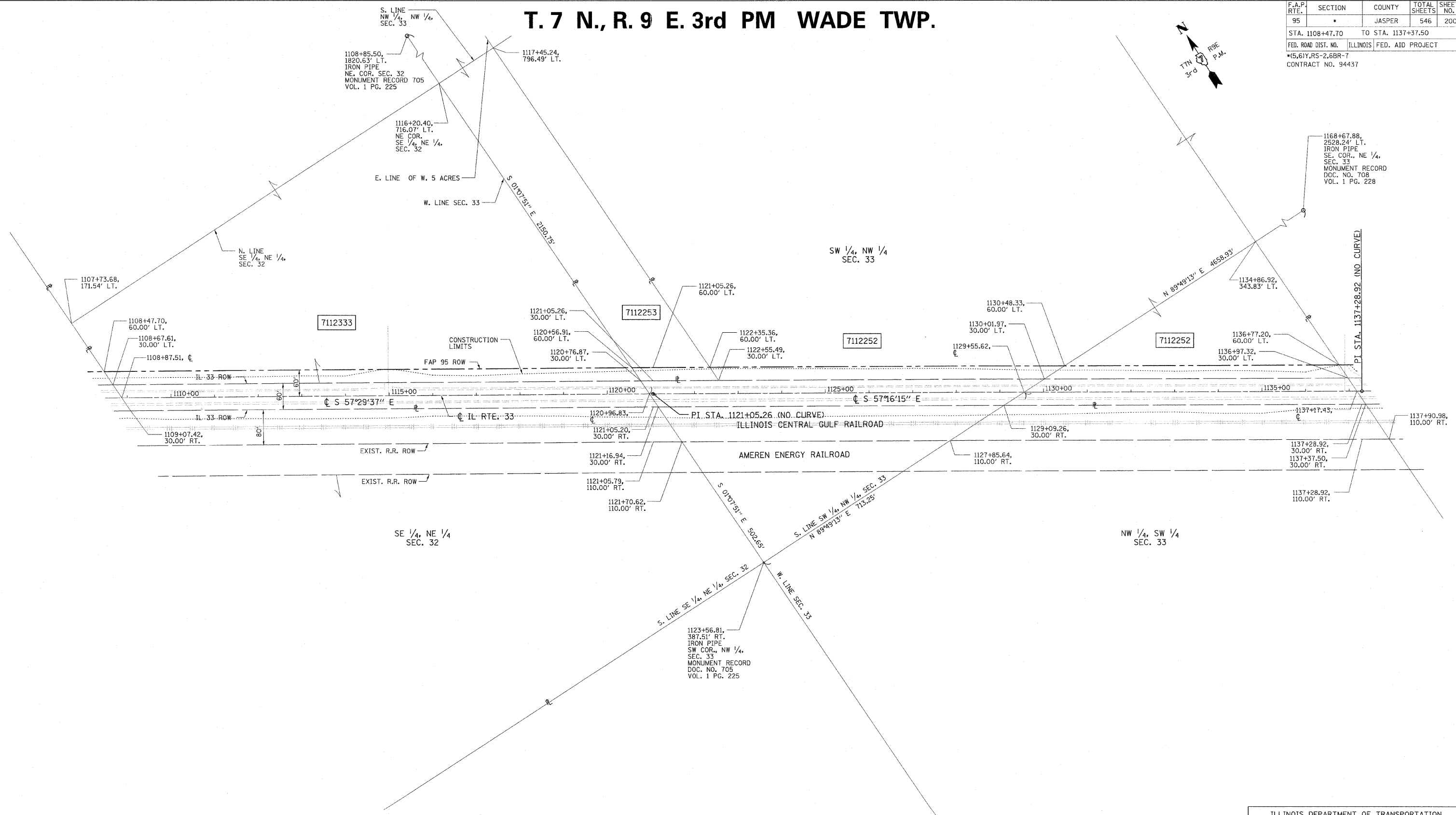


T. 7 N., R. 9 E. 3rd PM WADE TWP.

F.A.P. RTE.	SECTION	COUNTY	TOTAL SHEETS	SHEET NO.
95		JASPER	546	200
STA. 1108+47.70 TO STA. 1137+37.50		ILLINOIS FED. AID PROJECT		
* (5,6)Y, RS-2, 6BR-7		CONTRACT NO. 94437		

NAME	DATE	REVISION
BISHOP	06/15/05	PRELIMINARY SUBMITTAL
BISHOP	12/01/05	PER IDOT COMMENTS
BOTT	02/01/08	PER IDOT COMMENTS
VERENSKI	11/06/08	PER IDOT COMMENTS



FILENAME: J:\01266.DRAWINGS\ACTIVE R.O.W.\RWP\PLAN20rev.dgn
 PLOT DATE: 8/23/2011 2:00:17 PM

CONTRACT NO. 94437

FIELD BOOK NO. ----

(R) RECORDED DISTANCE

- - IRON PIN
- - BRASS MONUMENT
- - ROW MARKER
- ▣ - CONCRETE MONUMENT
- - STEEL POST
- ⊙ - IRON PIPE
- ⊚ - CONCRETE POST
- ▲ - RAILROAD SPIKE
- △ - NAIL
- - TEMP. CONST. EASEMENT
- - - - PERM. EASEMENT

UTILITIES:	
TELEPHONE - CHARTER COMMUNICATIONS	VERIZON NORTH, INC. MCI
GAS - AMEREN CIPS	
ELECTRICITY - AMEREN CIPS	NORRIS ELECTRIC COOP
WATER - CITY OF NEWTON	

PARCEL	OWNER	AREA TAKEN		EASEMENT	REM. AREA	INST	RECORDED				EXCESS	
		ADD	EXIST.				MICRO FILM NO.	DATE	BOOK	PAGE	AREA	SOLD
7112333	LAURENCE E. BEAM, et. al.	0.8328 AC	1.6657 AC	-	64.62 AC	-	-	-	-	-	-	-
7112253	LAURENCE E. BEAM, et. al.	0.1231 AC	0.0000 AC	-	8.16 AC	-	-	-	-	-	-	-
7112252	JOSEPH C. BIERMAN	0.9930 AC	2.2322 AC	-	73.95 AC	-	-	-	-	-	-	-

NOTE: BEARINGS ARE REFERENCED TO THE ILLINOIS STATE PLANE COORDINATE SYSTEM EAST ZONE DATUM OF 1983.

ILLINOIS DEPARTMENT OF TRANSPORTATION
RIGHT OF WAY PLAN
 FAP ROUTE 95 (IL RTE. 33)
 SECTION (5,6)Y, RS-2, 6BR-7
 JASPER COUNTY
 JOB NO. R-97-012-01
 STA. 1108+47.70 TO STA. 1137+37.50

SCALE: 1" = 100'

ILLINOIS DEPARTMENT OF TRANSPORTATION
 DIVISION OF HIGHWAYS/DISTRICT 7

JOB NO. R-97-012-01