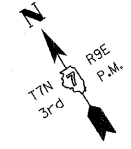
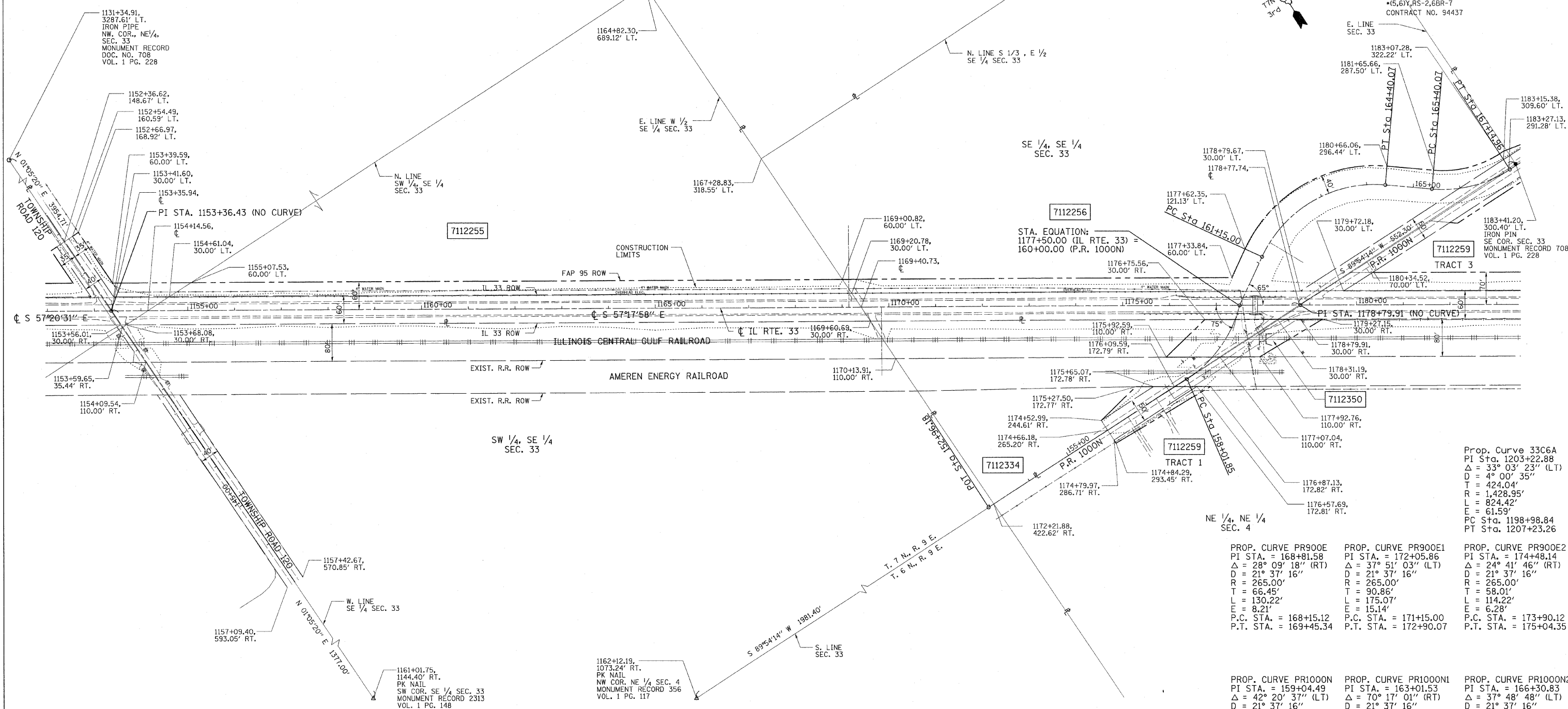


# T. 7 N., R. 9 E. 3rd PM WADE TWP.

F.A.P. RTE.	SECTION	COUNTY	TOTAL SHEETS	SHEET NO.
95	*	JASPER	546	202
STA. 1152+36.62 TO STA. 1183+41.20				
FED. ROAD DIST. NO. ILLINOIS FED. AID PROJECT				
*(5,6)Y,RS-2,6BR-7				
CONTRACT NO. 94437				



NAME	DATE	REVISION
BISHOP	06/15/05	PRELIMINARY SUBMITTAL
BISHOP	12/01/05	PER IDOT COMMENTS
BOTT	02/04/08	PER IDOT COMMENTS
HUPP	03/11/11	PER IDOT COMMENTS



Prop. Curve 33C6A  
 PI Sta. 1203+22.88  
 $\Delta = 33^{\circ} 03' 23''$  (LT)  
 $D = 4^{\circ} 00' 35''$   
 $T = 424.04'$   
 $R = 1,428.95'$   
 $L = 824.42'$   
 $E = 61.59'$   
 PC Sta. 1198+98.84  
 PT Sta. 1207+23.26

PROP. CURVE PR900E  
 PI STA. = 168+81.58  
 $\Delta = 28^{\circ} 09' 18''$  (RT)  
 $D = 21^{\circ} 37' 16''$   
 $R = 265.00'$   
 $T = 66.45'$   
 $L = 130.22'$   
 $E = 8.21'$   
 P.C. STA. = 168+15.12  
 P.T. STA. = 169+45.34

PROP. CURVE PR900E1  
 PI STA. = 172+05.86  
 $\Delta = 24^{\circ} 41' 03''$  (LT)  
 $D = 21^{\circ} 37' 16''$   
 $R = 265.00'$   
 $T = 90.86'$   
 $L = 175.07'$   
 $E = 15.14'$   
 P.C. STA. = 171+15.00  
 P.T. STA. = 172+90.07

PROP. CURVE PR900E2  
 PI STA. = 174+48.14  
 $\Delta = 24^{\circ} 41' 46''$  (RT)  
 $D = 21^{\circ} 37' 16''$   
 $R = 265.00'$   
 $T = 58.01'$   
 $L = 114.22'$   
 $E = 6.28'$   
 P.C. STA. = 173+90.12  
 P.T. STA. = 175+04.35

PROP. CURVE PR1000N  
 PI STA. = 159+04.49  
 $\Delta = 42^{\circ} 20' 37''$  (LT)  
 $D = 21^{\circ} 37' 16''$   
 $R = 265.00'$   
 $T = 102.64'$   
 $L = 195.84'$   
 $E = 19.18'$   
 P.C. STA. = 158+01.85  
 P.T. STA. = 159+97.69

PROP. CURVE PR1000N1  
 PI STA. = 163+01.53  
 $\Delta = 70^{\circ} 17' 01''$  (RT)  
 $D = 21^{\circ} 37' 16''$   
 $R = 265.00'$   
 $T = 186.53'$   
 $L = 325.07'$   
 $E = 59.07'$   
 P.C. STA. = 161+15.00  
 P.T. STA. = 164+40.07

PROP. CURVE PR1000N2  
 PI STA. = 166+30.83  
 $\Delta = 37^{\circ} 48' 48''$  (LT)  
 $D = 21^{\circ} 37' 16''$   
 $R = 265.00'$   
 $T = 90.76'$   
 $L = 174.89'$   
 $E = 15.11'$   
 P.C. STA. = 165+40.07  
 P.T. STA. = 167+14.96

PARCEL	OWNER	AREA TAKEN		EASEMENT	REM. AREA	INST	RECORDED				EXCESS	
		ADD	EXIST.				MICRO FILM NO.	DATE	BOOK	PAGE	AREA	SOLD
7112255	RAYMOND W. BURTON, et. al.	1.1310 AC	2.2842 AC	-	47.38 AC	-	-	-	-	-	-	-
7112256	Lo DONNE MITCHELL	2.3188 AC	1.7494 AC	-	100.93 AC	-	-	-	-	-	-	-
7112334	DAVID BROCK WEBSTER	0.0310 AC	0.0846 AC	-	0.52 AC	-	-	-	-	-	-	-
7112259	F. CLARREAN BROOKS	0.9539 AC	2.1529 AC	-	57.98 AC	-	-	-	-	-	-	-
	TRACT 1	0.0602 AC	0.1129 AC	-		-	-	-	-	-	-	-
	TRACT 2	0.0589 AC	0.1251 AC	-		-	-	-	-	-	-	-
7112350	ILLINOIS CENTRAL GULF RAILROAD			0.4149 AC		-	-	-	-	-	-	-

CONTRACT NO. 94437

- FIELD BOOK NO. ----  
 (R) RECORDED DISTANCE
- - IRON PIN
  - - BRASS MONUMENT
  - - ROW MARKER
  - ▣ - CONCRETE MONUMENT
  - - STEEL POST
  - - IRON PIPE
  - - CONCRETE POST
  - ▲ - RAILROAD SPIKE
  - ▲ - NAIL
  - - TEMP. CONST. EASEMENT
  - - PERM. EASEMENT

**UTILITIES:**

TELEPHONE - CHARTER COMMUNICATIONS  
 VERIZON NORTH, INC. MCI

GAS - AMEREN CIPS

ELECTRICITY - AMEREN CIPS  
 NORRIS ELECTRIC COOP

WATER - CITY OF NEWTON

NOTE: BEARINGS ARE REFERENCED TO THE ILLINOIS STATE PLANE COORDINATE SYSTEM EAST ZONE DATUM OF 1983.

ILLINOIS DEPARTMENT OF TRANSPORTATION  
**RIGHT OF WAY PLAN**  
 FAP ROUTE 95 (IL RTE. 33)  
 SECTION (5,6)Y, RS-2, 6BR-7  
 JASPER COUNTY  
 JOB NO. R-97-012-01  
 STA. 1152+36.62 TO STA. 1183+41.20

SCALE: 1" = 100'

SHEET 24 OF 33

ILLINOIS DEPARTMENT OF TRANSPORTATION  
 DIVISION OF HIGHWAYS/DISTRICT 7

JOB NO. R-97-012-01