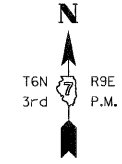


# T. 6 N., R. 9 E. 3rd PM WADE TWP.

F.A.P. RTE.	SECTION	COUNTY	TOTAL SHEETS	SHEET NO.
95	*	JASPER	546	207
STA. 2237+00.00		TO STA. 1247+50.00		
FED. ROAD DIST. NO.		ILLINOIS	FED. AID PROJECT	
*(5,6)Y,RS-2,6BR-7		CONTRACT NO. 94437		

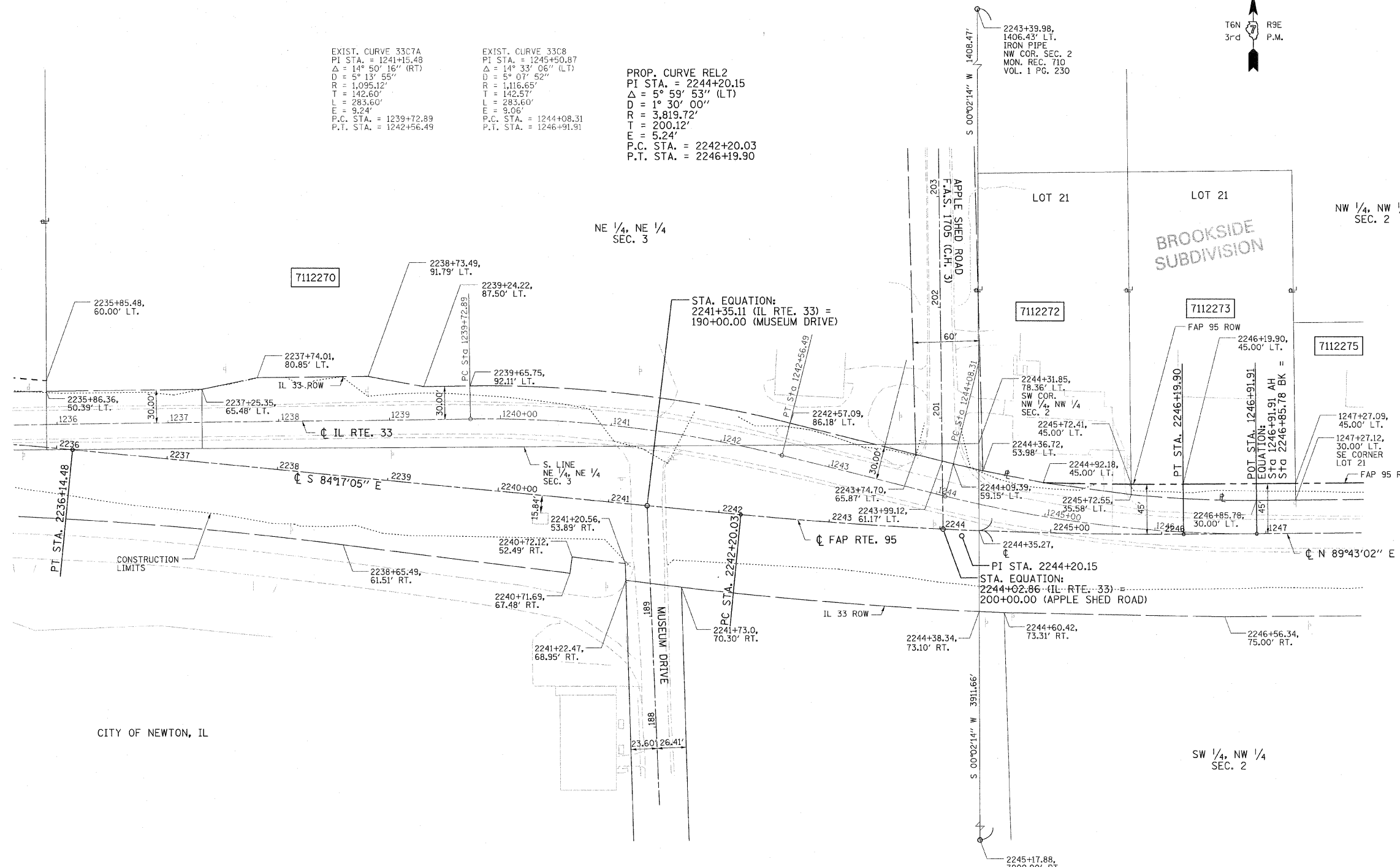


NAME	DATE	REVISION
BISHOP	06/15/05	PRELIMINARY SUBMITTAL
BISHOP	12/01/05	PER IDOT COMMENTS
BOTT	02/04/08	PER IDOT COMMENTS
BOTT	03/06/08	PER IDOT COMMENTS

EXIST. CURVE 33C7A  
 PI STA. = 1241+15.48  
 $\Delta = 14^\circ 50' 16''$  (RT)  
 $D = 5^\circ 13' 55''$   
 $R = 1,095.12'$   
 $T = 142.50'$   
 $L = 283.60'$   
 $E = 9.24'$   
 P.C. STA. = 1239+72.89  
 P.T. STA. = 1242+56.49

EXIST. CURVE 33C8  
 PI STA. = 1245+50.87  
 $\Delta = 14^\circ 33' 06''$  (LT)  
 $D = 5^\circ 07' 52''$   
 $R = 1,116.65'$   
 $T = 142.57'$   
 $L = 283.60'$   
 $E = 9.06'$   
 P.C. STA. = 1244+08.31  
 P.T. STA. = 1246+91.91

PROP. CURVE REL2  
 PI STA. = 2244+20.15  
 $\Delta = 5^\circ 59' 53''$  (LT)  
 $D = 1^\circ 30' 00''$   
 $R = 3,819.72'$   
 $T = 200.12'$   
 $E = 5.24'$   
 P.C. STA. = 2242+20.03  
 P.T. STA. = 2246+19.90



FILENAME: J:\0258.DRAWINGS\ACTIVE R.O.W\ROWPLAN27rev.dgn  
 PLOT DATE: 8/23/2011 2:03:04 PM

DRAWN BY: BISHOP  
 WRITTEN BY: EMBICK  
 CHECKED BY: BOTT  
 INSPECTED BY: ---

CONTRACT NO. 94437  
 FIELD BOOK NO. ---  
 (R) RECORDED DISTANCE

- - IRON PIN
- - BRASS MONUMENT
- - ROW MARKER
- ▣ - CONCRETE MONUMENT
- - STEEL POST
- - IRON PIPE
- - CONCRETE POST
- ▲ - RAILROAD SPIKE
- ▲ - NAIL
- - TEMP. CONST. EASEMENT
- - PERM. EASEMENT

**UTILITIES:**  
 TELEPHONE - CHARTER COMMUNICATIONS  
 VERIZON NORTH, INC.  
 GAS - AMEREN CIPS  
 ELECTRICITY - AMEREN CIPS  
 WATER - CITY OF NEWTON  
 T.V. CABLE -

PARCEL	OWNER	AREA TAKEN		EASEMENT	REM. AREA	INST	RECORDED				EXCESS	
		ADD	EXIST.				MICRO FILM NO.	DATE	BOOK	PAGE	AREA	SOLD
7112272	DAVID SCOTT BLOOMBERG, et. al.	0.0092 AC	0.0000 AC	-	0.87 AC	-	-	-	-	-	-	-
7112273	JAMES A. FALLER, et. al.	0.0460 AC	0.0000 AC	-	0.96 AC	-	-	-	-	-	-	-

NOTE: BEARINGS ARE REFERENCED TO THE ILLINOIS STATE PLANE COORDINATE SYSTEM EAST ZONE DATUM OF 1983.

ILLINOIS DEPARTMENT OF TRANSPORTATION  
**RIGHT OF WAY PLAN**  
 FAP ROUTE 95 (IL RTE. 33)  
 SECTION (5,6)Y, RS-2, 6BR-7  
 JASPER COUNTY  
 JOB NO. R-97-012-01  
 STA. 2237+00 TO STA. 1247+50

SCALE: 1" = 50'

SHEET 29 OF 33

ILLINOIS DEPARTMENT OF TRANSPORTATION  
 DIVISION OF HIGHWAYS/DISTRICT 7

JOB NO. R-97-012-01