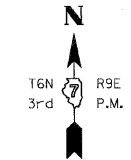
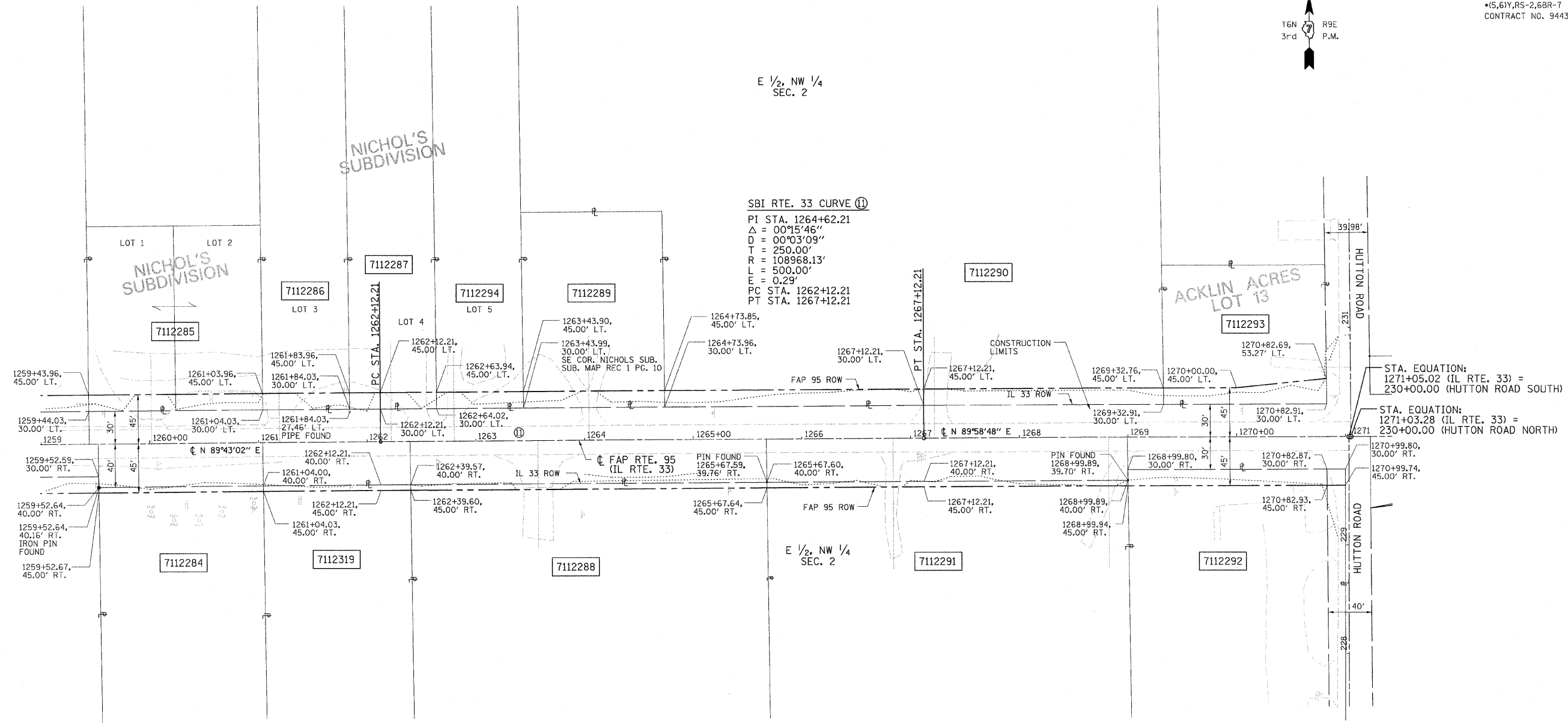


T. 6 N., R. 9 E. 3rd PM WADE TWP.

F.A.P. RTE.	SECTION	COUNTY	TOTAL SHEETS	SHEET NO.
95	*	JASPER	546	209
STA. 1259+43.96		TO STA. 1271+50.00		
FED. ROAD DIST. NO.		ILLINOIS FED. AID PROJECT		
*(5,6)Y,RS-2,6BR-7		CONTRACT NO. 94437		



NAME	DATE	REVISION
BISHOP	06/15/05	PRELIMINARY SUBMITTAL
BISHOP	12/01/05	PER IDOT COMMENTS
BOIT	03/06/08	PER IDOT COMMENTS



FILENAME: J:\01256.DRAWINGS\ACTIVE R.O.W\ROWPL_A293rev.dgn
 PLOT DATE: 8/23/2011 2:03:49 PM

DRAWN BY: BISHOP
 WRITTEN BY: EMRICK
 CHECKED BY: BOIT
 INSPECTED BY: ---

CONTRACT NO. 94437

- FIELD BOOK NO. ----
 (R) RECORDED DISTANCE
- - IRON PIN
 - - BRASS MONUMENT
 - - ROW MARKER
 - ▣ - CONCRETE MONUMENT
 - ⊙ - STEEL POST
 - - IRON PIPE
 - ⊕ - CONCRETE POST
 - ▲ - RAILROAD SPIKE
 - △ - NAIL
 - - TEMP. CONST. EASEMENT
 - - PERM. EASEMENT

UTILITIES:
 TELEPHONE - CHARTER COMMUNICATIONS
 VERIZON NORTH, INC.
 GAS - AMEREN CIPS
 ELECTRICITY - AMEREN CIPS
 WATER - CITY OF NEWTON
 T.V. CABLE -

PARCEL	OWNER	AREA TAKEN		EASEMENT	REM. AREA	INST	RECORDED				EXCESS	
		ADD	EXIST.				MICRO FILM NO.	DATE	BOOK	PAGE	AREA	SOLD
7112285	DELANO W. ALTHOFF, et. al.	0.0551 AC	0.0000 AC	-	0.56 AC	-	-	-	-	-	-	-
7112286	ROBERT A. SCHAFER, D.V.M., et. al.	0.0275 AC	0.0000 AC	-	0.78 AC	-	-	-	-	-	-	-
7112287	KENNETH W. ALBRECHT, D.V.M., et. al.	0.0275 AC	0.0000 AC	-	0.77 AC	-	-	-	-	-	-	-
7112294	HERMAN E. WHALEN	0.0275 AC	0.0000 AC	-	0.77 AC	-	-	-	-	-	-	-
7112289	HERMAN WHALEN	0.0448 AC	0.0000 AC	-	0.49 AC	-	-	-	-	-	-	-
7112290	KEITH D. ROMACK, et. al.	0.1581 AC	0.0000 AC	-	7.52 AC	-	-	-	-	-	-	-
7112293	DON E. NICHOLS	0.0595 AC	0.0000 AC	-	0.38 AC	-	-	-	-	-	-	-
7112284	FIRST NATIONAL BANK IN OLNEY	0.0174 AC 757 FT.²	0.0000 AC 0 FT.²	-	1.98 AC	-	-	-	-	-	-	-
7112319	ROBERT L. HANSON, INC.	0.0156 AC 678 FT.²	0.0000 AC 0 FT.²	-	2.30 AC	-	-	-	-	-	-	-
7112288	MATTHEW D. BUCHANAN, et. al.	0.0376 AC	0.0000 AC	-	5.26 AC	-	-	-	-	-	-	-
7112291	ALYNE S. GALLOWAY	0.0381 AC	0.0000 AC	-	6.61 AC	-	-	-	-	-	-	-
7112292	JASPER COUNTY FARM BUREAU	0.0630 AC	0.0058 AC	-	1.93 AC	-	-	-	-	-	-	-

NOTE: TEMPORARY EASEMENTS ARE NEEDED AS A WORK AREA.

NOTE: BEARINGS ARE REFERENCED TO THE ILLINOIS STATE PLANE COORDINATE SYSTEM EAST ZONE DATUM OF 1983.

ILLINOIS DEPARTMENT OF TRANSPORTATION
RIGHT OF WAY PLAN
 FAP ROUTE 95 (IL RTE. 33)
 SECTION (5,6)Y, RS-2, 6BR-7
 JASPER COUNTY
 JOB NO. R-97-012-01
 STA. 1259+43.96 TO STA. 1271+50.00

ILLINOIS DEPARTMENT OF TRANSPORTATION
 DIVISION OF HIGHWAYS/DISTRICT 7

JOB NO. R-97-012-01