

DESIGN	INT.	DATE	REASON

BY	DATE

PLOTS & CHECKS	INT.	DATE	NO.	REASON

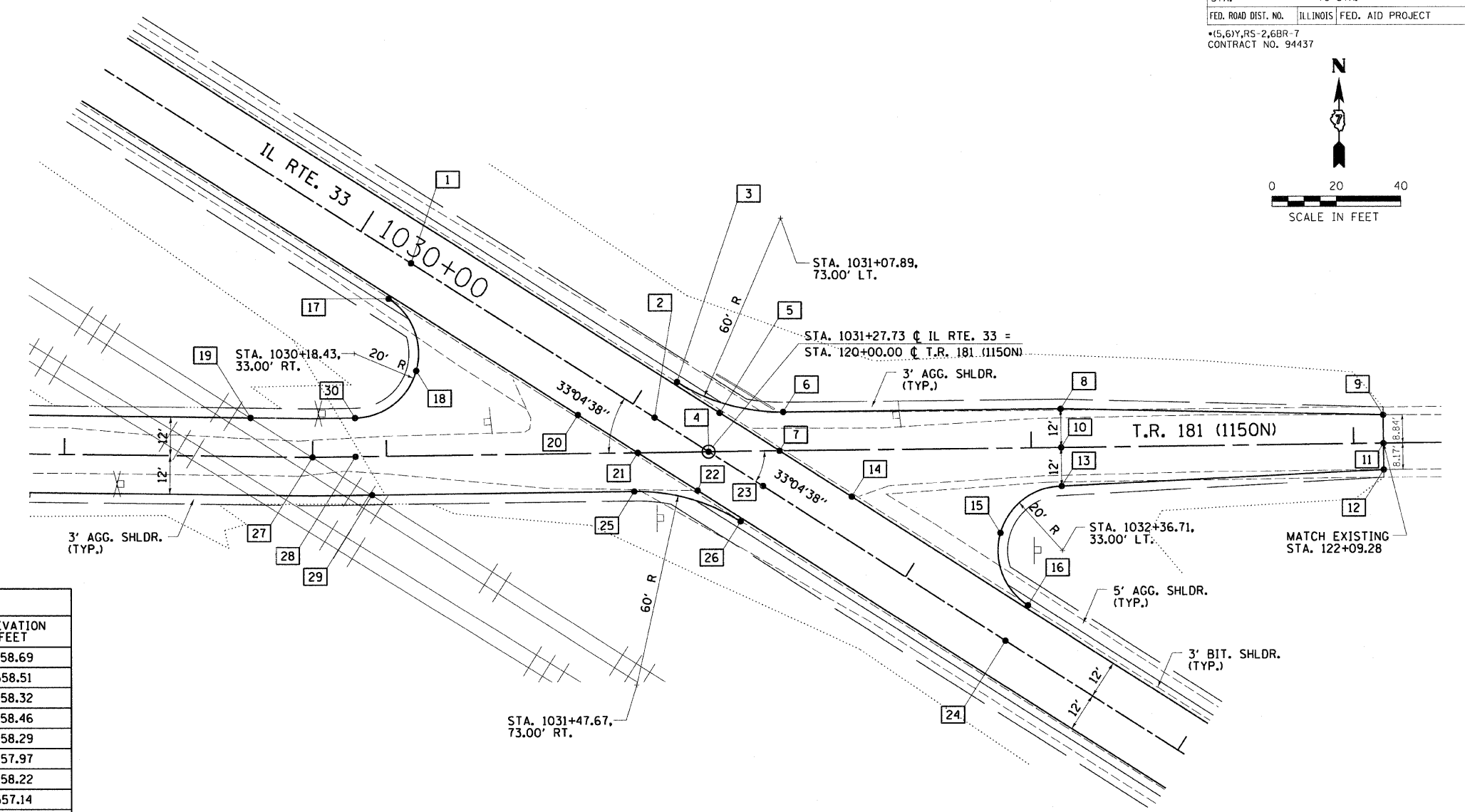
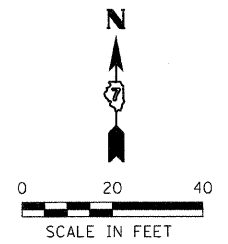
BY	DATE

CHECKS	INT.	DATE	REASON

F.A.P. RTE.	SECTION	COUNTY	TOTAL SHEETS	SHEET NO.
95	.	JASPER	546	224

FED. ROAD DIST. NO. ILLINOIS FED. AID PROJECT

*15.6Y,RS-2,6BR-7 CONTRACT NO. 94437



T.R. 181 (1150N)					
BOX NUMBER	STATIONING ALONG IL. RTE. 33	OFFSET FEET	STATIONING ALONG T.R. 181	OFFSET FEET	ELEVATION FEET
1	1030+18.43	0.00 RT	119+08.41	59.65 LT	558.69
2	1031+07.89	0.00 LT	119+83.37	10.83 LT	558.51
3	1031+07.89	13.00 LT	119+90.47	21.72 LT	558.32
4	1031+27.73	0.00 LT	120+00.00	0.00 RT	558.46
5	1031+24.17	12.00 LT	120+03.57	12.00 LT	558.29
6	1031+40.60	22.73 LT	120+23.21	12.00 LT	557.97
7	1031+46.11	12.00 LT	120+21.96	0.00 RT	558.22
8	1032+12.64	69.83 LT	121+09.29	12.00 LT	557.14
9	1032+98.07	121.90 LT	122+09.28	8.84 LT	557.04
10	1032+19.20	59.79 LT	121+09.28	0.00 RT	557.38
11	1033+02.90	114.50 LT	122+09.28	0.00 RT	557.04
12	1033+07.38	107.66 LT	122+09.28	8.17 RT	556.86
13	1032+25.77	49.74 LT	121+09.28	12.00 RT	557.14
14	1031+72.59	12.00 LT	120+44.13	14.49 RT	558.16
15	1032+17.55	27.29 LT	120+90.12	26.29 RT	557.58
16	1032+36.71	13.00 LT	120+98.34	48.74 RT	558.04
17	1030+18.43	13.00 RT	119+01.32	48.76 LT	558.50
18	1030+37.61	27.31 RT	119+09.58	26.31 LT	558.95
19	1030+01.90	67.07 RT	118+57.65	12.00 LT	560.22
20	1030+87.32	12.00 RT	119+59.59	12.00 LT	558.38
21	1031+09.31	12.00 RT	119+78.01	0.00 RT	558.33
22	1031+31.30	12.00 RT	119+96.44	12.00 RT	558.27
23	1031+47.67	0.00 LT	120+16.70	10.90 RT	558.40
24	1032+36.71	0.00 LT	120+91.23	59.62 RT	558.23
25	1031+14.80	22.74 RT	119+76.75	12.00 RT	557.93
26	1031+47.67	13.00 RT	120+09.58	21.78 RT	558.21
27	1030+24.70	67.11 RT	118+77.04	0.00 RT	560.22
28	1030+35.90	59.81 RT	118+90.41	0.00 RT	559.64
29	1030+46.63	67.14 RT	118+95.40	12.00 RT	560.22
30	1030+29.35	49.76 RT	118+90.41	12.00 LT	559.40

ILLINOIS DEPARTMENT OF TRANSPORTATION
INTERSECTION DETAILS
 FAP ROUTE 95 (IL RTE. 33)
 SECTION 15.6Y,RS-2,6BR-7
 JASPER COUNTY

SCALE: VERT.
 HORIZ.
 DATE: 08/21/02

DRAWN BY: JAMESON
 DESIGNED BY: COLBROOK
 CHECKED BY: COLBROOK

REVISIONS	
NAME	DATE

COMPUTER FILE NO. INT-04-A
 PROJECT 01256
 2/26/10-FAV

GREENE & BRADFORD, INC.
 OF SPRINGFIELD
 REGISTERED PROFESSIONAL ENGINEERS
 PROFESSIONAL ENGINEERING CORPORATION
 615 N. STATE ST. SUITE 400, SPRINGFIELD, ILL. 62761