

DESIGN		
INT.	DATE	REASON

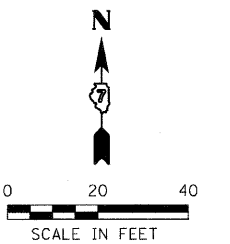
PLAN	DATE

P.O.T.S & CHECKS		
INT.	DATE	REASON

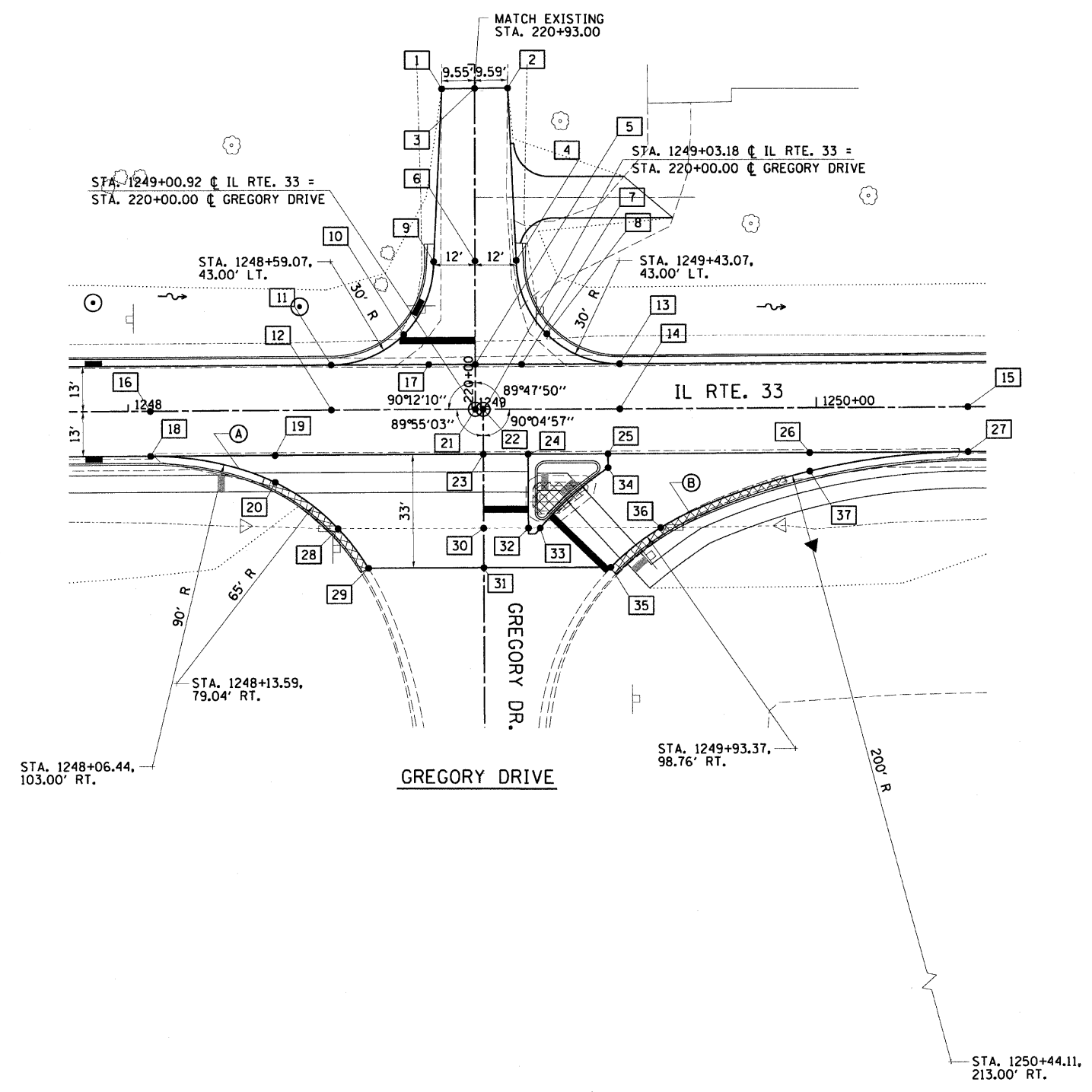
PROFILE	DATE

CHECKS		
INT.	DATE	REASON

F.A.P. RTE.	SECTION	COUNTY	TOTAL SHEETS	SHEET NO.
95		JASPER	546	233
STA.		TO STA.		
FED. ROAD DIST. NO.		ILLINOIS FED. AID PROJECT		
*15.61Y,RS-2,6BR-7		CONTRACT NO. 94437		



- (A) STA. 1248+32.17, 16.76' RT. POINT OF COMPOUND CURVATURE
- (B) STA. 1249+62.92, 30.22' RT. POINT OF COMPOUND CURVATURE



GREGORY DRIVE					
BOX NUMBER	STATIONING ALONG IL. RTE. 33	OFFSET FEET	STATIONING ALONG GREGORY DRIVE	OFFSET FEET	ELEVATION FEET
1	1248+91.70	92.92 LT	220+92.88	9.55 LT	545.92
2	1249+10.84	93.09 LT	220+93.12	9.59 RT	545.60
3	1249+01.24	93.00 LT	220+93.00	0.00 LT	545.93
4	1249+13.07	43.11 LT	220+43.15	12.00 RT	545.78
5	1249+00.96	13.00 LT	220+13.00	0.00 RT	546.07
6	1249+01.07	43.00 LT	220+43.00	0.00 RT	546.02
7	1249+14.41	13.00 LT	220+13.05	13.45 RT	545.92
8	1249+21.82	21.82 LT	220+21.90	20.82 RT	545.69
9	1248+89.07	42.89 LT	220+42.85	12.00 LT	545.78
10	1248+80.24	21.75 LT	220+21.68	20.75 LT	546.16
11	1248+59.07	13.00 LT	220+12.85	41.89 LT	546.54
12	1248+59.07	0.00 RT	220+12.85	41.89 LT	546.73
13	1249+42.96	13.00 LT	220+13.15	42.00 RT	545.60
14	1249+42.96	0.00 RT	220+00.15	42.05 RT	545.79
15	1250+44.11	0.00 RT	220+00.20	140.92 RT	544.66
16	1248+06.44	0.00 RT	220+00.42	118.38 RT	547.32
17	1248+87.47	13.00 LT	220+12.95	13.49 LT	546.22
18	1248+06.44	13.00 RT	219+86.86	96.73 LT	547.12
19	1248+42.62	13.00 RT	219+86.91	60.55 LT	546.72
20	1248+42.62	20.89 RT	219+79.02	60.53 LT	546.68
21	1249+00.92	0.00 RT	219+99.99	2.27 LT	546.26
22	1249+03.18	0.00 RT	220+00.00	0.00 RT	546.24
23	1249+03.17	13.00 RT	219+87.00	0.00 RT	546.04
24	1249+16.17	13.00 RT	219+87.02	13.00 RT	545.90
25	1249+39.43	13.00 RT	219+87.05	36.27 RT	545.64
26	1249+98.04	13.00 RT	219+87.13	94.88 RT	544.98
27	1250+44.11	13.00 RT	219+87.20	140.94 RT	544.46
28	1248+60.80	34.42 RT	219+65.51	42.34 LT	546.23
29	1249+69.61	46.00 RT	219+53.95	33.51 LT	546.24
30	1249+03.13	34.50 RT	219+65.52	0.00 RT	545.75
31	1249+03.12	46.00 RT	219+54.00	0.00 RT	545.92
32	1249+16.17	34.50 RT	219+65.52	13.00 RT	545.53
33	1249+19.55	34.50 RT	219+65.52	16.42 RT	545.46
34	1249+39.43	17.00 RT	219+83.05	36.27 RT	545.54
35	1249+40.06	46.00 RT	219+54.05	36.94 RT	545.24
36	1249+54.62	34.55 RT	219+65.52	51.48 RT	545.04
37	1249+98.04	18.38 RT	219+81.76	94.89 RT	544.75

ILLINOIS DEPARTMENT OF TRANSPORTATION  
**INTERSECTION DETAILS**  
 FAP ROUTE 95 (IL RTE. 33)  
 SECTION (5,6)Y,RS-2,6BR-7  
 JASPER COUNTY

SCALE: VERT. \_\_\_\_\_  
 HORIZ. \_\_\_\_\_  
 DATE: 08/21/02

DRAWN BY: JAMESON  
 DESIGNED BY: COLBROOK  
 CHECKED BY: COLBROOK

COMPUTER FILE NO.  
 INT-08-B  
 PROJECT 01256  
 2/26/10-FAV

GREENE & BRADFORD, INC.  
 OF SPRINGFIELD  
 REGISTERED PROFESSIONAL ENGINEERS  
 LICENSE NO. 0001

REVISIONS		
NAME	DATE	