

DESIGN		
INT.	DATE	REASON

PLAN	REVISION	DATE	BY

PLOTS & CHECKS		
INT.	DATE	REASON

PROFILE	REVISION	DATE	BY

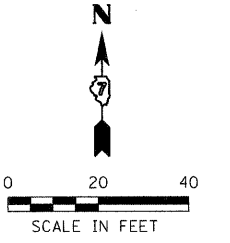
CHECKS		
INT.	DATE	REASON

F.A.P. RTE.	SECTION	COUNTY	TOTAL SHEETS	SHEET NO.
95		JASPER	546	235

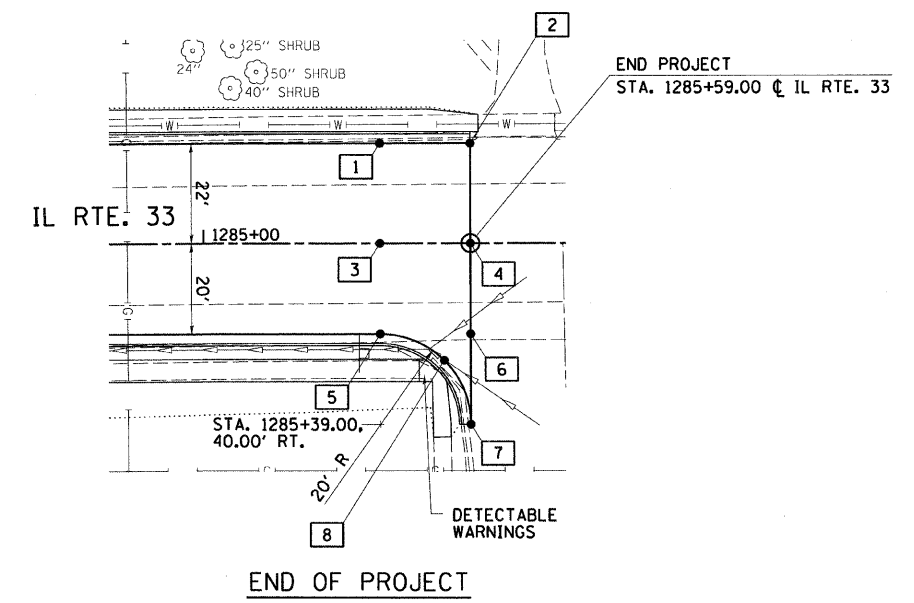
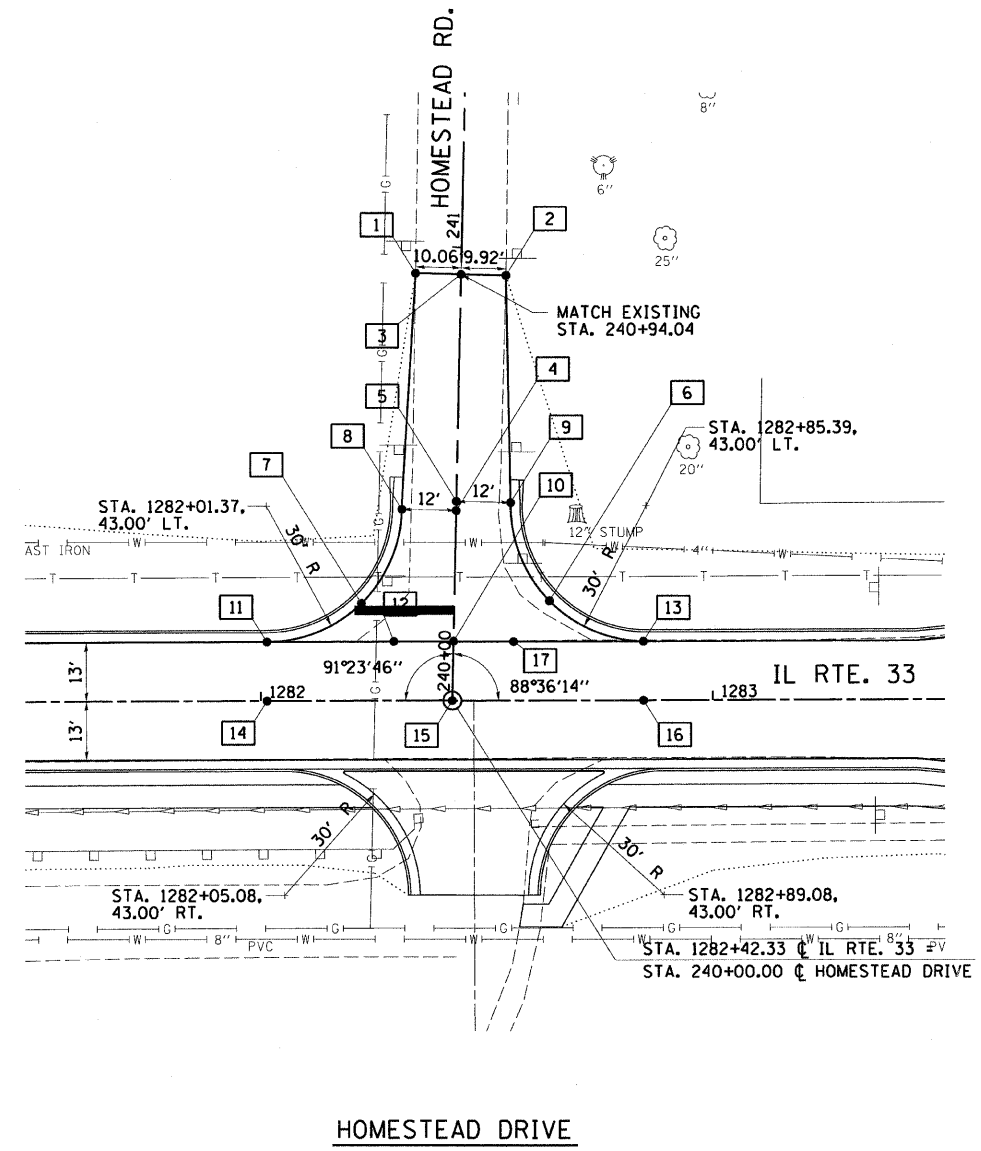
STA. _____ TO STA. _____

FED. ROAD DIST. NO. _____ ILLINOIS FED. AID PROJECT

*15,6Y,RS-2,6BR-7
CONTRACT 94437



END OF PROJECT			
BOX NUMBER	STATIONING ALONG IL. RTE. 33	OFFSET FEET	ELEVATION FEET
1	1285+39.01 R 7	22.00 LT	535.87
2	1285+59.00 R 7	22.00 LT	535.57
3	1285+39.01 R 7	0.00 RT	536.20
4	1285+59.00 R 7	0.00 RT	536.16
5	1285+39.00 R 7	20.00 RT	535.90
6	1285+59.00 R 7	20.00 RT	535.72
7	1285+59.00 R 7	40.00 RT	535.42
8	1285+53.15 R 7	25.86 RT	535.66



HOMESTEAD ROAD					
BOX NUMBER	STATIONING ALONG IL. RTE. 33	OFFSET FEET	STATIONING ALONG HOMESTEAD ROAD	OFFSET FEET	ELEVATION FEET
1	1282+34.56 R 7	94.25 LT	240+94.04	10.06 LT	536.54
2	1282+54.54 R 7	93.77 LT	240+94.04	9.92 RT	536.66
3	1282+44.62 R 7	94.01 LT	240+94.04	0.00 RT	536.95
4	1282+43.35 R 7	41.98 LT	240+41.99	0.00 RT	536.95
5	1282+43.40 R 7	44.02 LT	240+44.04	0.00 RT	536.95
6	1282+63.92 R 7	22.05 LT	240+22.57	21.05 RT	536.58
7	1282+22.32 R 7	21.53 LT	240+21.04	20.53 LT	536.47
8	1282+31.36 R 7	42.27 LT	240+41.99	12.00 LT	536.77
9	1282+55.40 R 7	43.73 LT	240+44.04	12.00 RT	536.77
10	1282+42.65 R 7	13.09 LT	240+13.10	0.00 RT	536.15
11	1282+01.37 R 7	13.00 LT	240+12.00	41.27 LT	536.03
12	1282+29.43 R 7	13.07 LT	240+12.75	13.21 LT	536.11
13	1282+84.66 R 7	13.01 LT	240+14.04	42.00 RT	536.28
14	1282+01.37 R 7	0.00 RT	240+14.04	42.00 RT	536.22
15	1282+42.33 R 7	0.00 RT	240+00.00	0.00 RT	536.34
16	1282+84.66 R 7	0.00 RT	240+01.03	42.32 RT	536.47
17	1282+55.93 R 7	13.00 LT	240+13.33	13.28 RT	536.19

REVISIONS	
NAME	DATE

ILLINOIS DEPARTMENT OF TRANSPORTATION
INTERSECTION DETAILS
FAP ROUTE 95 (IL RTE. 33)
SECTION 15,6Y,RS-2,6BR-7
JASPER COUNTY

SCALE: VERT. _____
HORIZ. _____
DATE: 08/21/02

DRAWN BY: JAMESON
DESIGNED BY: COLBROOK
CHECKED BY: COLBROOK

GREENE & BRADFORD, INC.
OF SPRINGFIELD
REGISTERED PROFESSIONAL ENGINEERS
ILLINOIS LICENSE NO. 0620
PROFESSIONAL DESIGNER LICENSE NO. 0014
REGISTERED PROFESSIONAL SURVEYORS
ILLINOIS LICENSE NO. 0014

COMPUTER FILE NO.
INT-09-A
PROJECT 01256
2/26/10-FAV