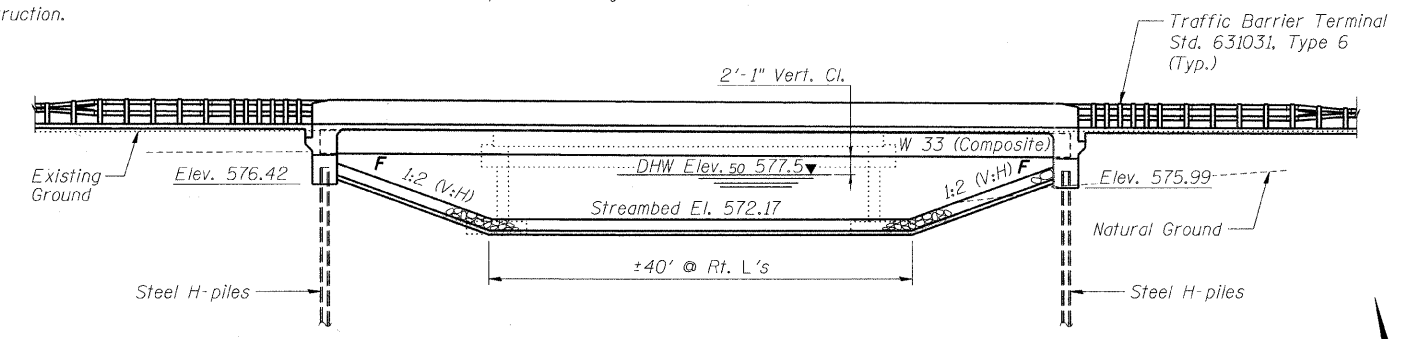


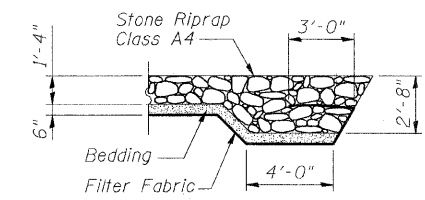
STATE OF ILLINOIS
DEPARTMENT OF TRANSPORTATION

ROUTE NO.	SECTION	COUNTY	TOTAL SHEETS	SHEET NO.	SHEET NO. 1 18 SHEETS
FAP 95	6BR-7	JASPER	546	241	
FED. ROAD DIST. NO.	ILLINOIS	FED. AID PROJECT	Contract No. 94437		

Bench Mark: B.M. #2. Sta. 725+36, 96' Rt. Survey monument elevation 588.14
Existing Structure: S.N. 040-0001 built 1925 as S.B.I. Route 33 Section 6B. 45'-3" bk. to bk. abutments 25'-8" out to out deck. Simple Span R.C. T girder superstructure on closed abutments. Superstructure replaced and bridge widened to 33'-0" out to out deck in 1975. Structure to be removed and replaced utilizing stage construction.
No Salvage.



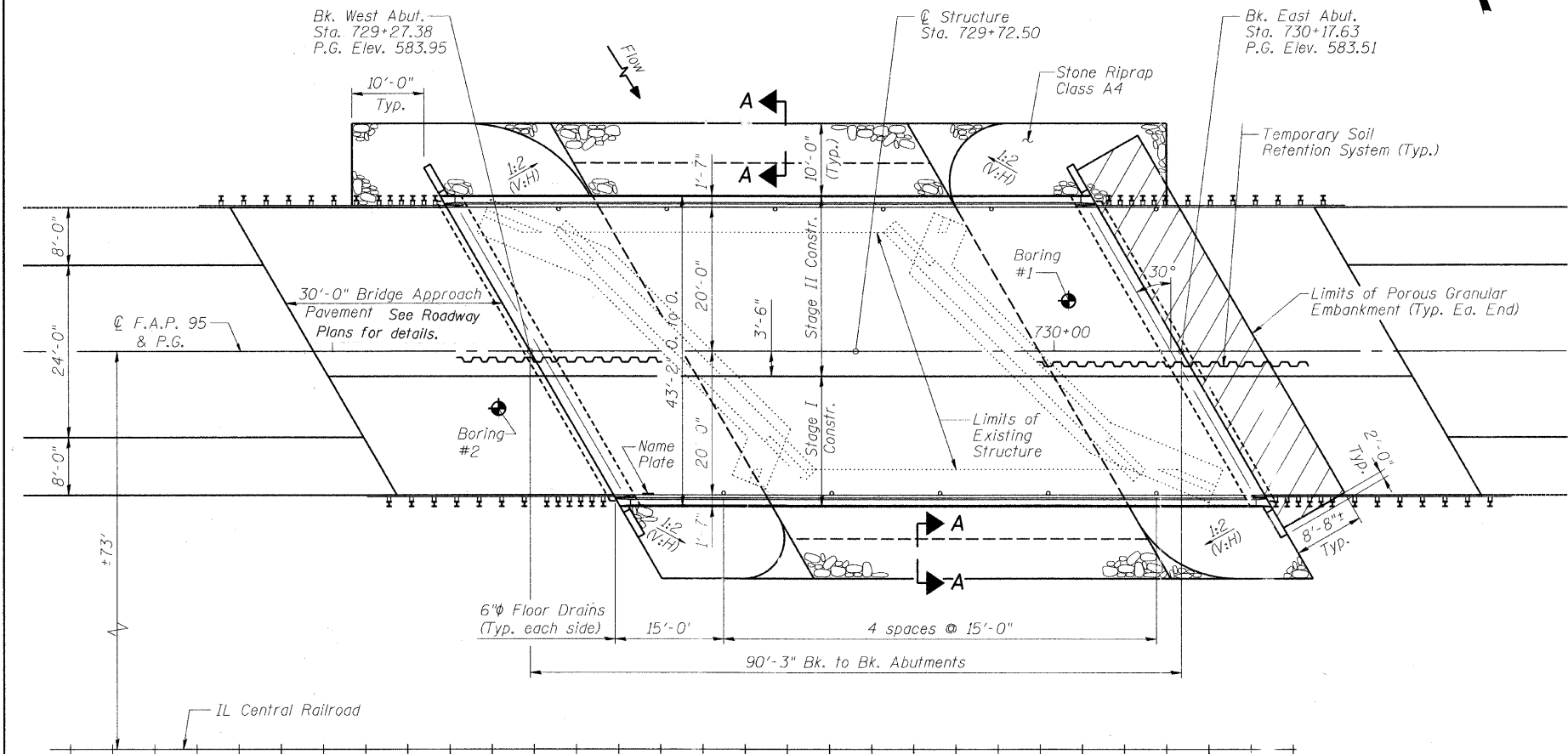
ELEVATION



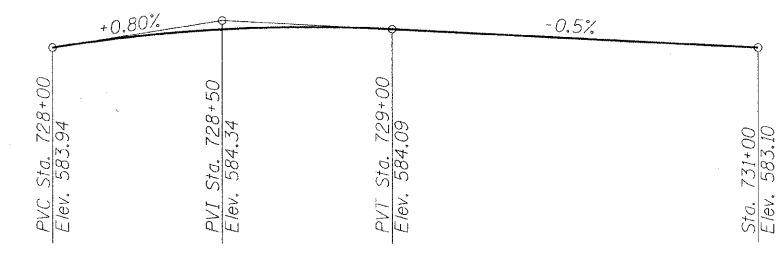
SECTION A-A

INDEX OF SHEETS

- 1 General Plan & Elevation
- 2 General Information
- 3 Stage Const. Details
- 4 Temp. Conc. Barrier
- 5-6 Top of Slab Elevations (1 of 2)
- 7-9 Superstructure
- 10 Structural Steel
- 11 Anchor Bolt Details
- 12-13 West Abutment
- 14-15 East Abutment
- 16 Bar Splicer Details
- 17 HP Pile Details
- 18 Boring Logs



PLAN



PROPOSED PROFILE GRADE
(at Center of Roadway)

APPROVED
FOR STRUCTURAL ADEQUACY ONLY
Ralph E. Anderson (Seal)
ENGINEER OF BRIDGES AND STRUCTURES

STATE OF ILLINOIS
MICHAEL J. TRINIO
REGISTERED PROFESSIONAL ENGINEER
NO. 081-000000
STRUCTURAL ENGINEERING
Expires: 11/30/10

WATERWAY INFORMATION

Drainage Area = 2.23 sq. mi.		Exist. Low Grade Elev. 582.43 @ Sta. 728+00		Prop. Low Grade Elev. 582.43 @ Sta. 728+00		
Flood	Freq. Yr.	Q C.F.S.	Opening Sq. Ft.	Nat. H.W.E.	Head - Ft.	Headwater El.
			Exist. Prop.	Exist. Prop.	Exist. Prop.	Exist. Prop.
Design	10	367	90 155	576.9 0.5 0.3	577.4 577.2	
Base	50	549	108 199	577.5 0.8 0.4	578.3 577.9	
Overtopping	100	624	115 214	577.7 0.9 0.5	578.6 578.2	
Max. Calc.	500	800	127 244	578.2 1.2 0.7	579.4 578.9	

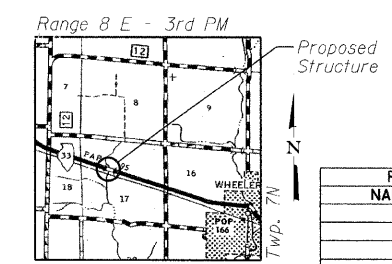
STATION 729+72.50
BUILT 2011 BY
STATE OF ILLINOIS
F.A.P. RTE. 95 SEC. 6BR-7
LOADING HS20
STR. NO. 040-0021

NAME PLATE
See Std. 515001

LOADING HS20-44
Allow 50#/sq. Ft. for future wearing surface.
DESIGN SPECIFICATIONS
2002 AASHTO

DESIGN STRESSES
FIELD UNITS
f_c = 3,500 psi
f_y = 60,000 psi (reinforcement)
f_y = 50,000 psi (M270 Gr. 50 structural steel)

SEISMIC DATA
Seismic Performance Category (SPC) = A
Bedrock Acceleration Coefficient (A) = 0.073g
Site Coefficient (S) = 1.0



LOCATION SKETCH

REVISIONS	
NAME	DATE

ILLINOIS DEPARTMENT OF TRANSPORTATION
GENERAL PLAN
IL RTE 33 OVER WEST FORK OF BIG MUDDY CREEK
FAP 95 - SECTION 6BR-7
JASPER COUNTY
STATION 729+72.50
S.N. 040-0021

SCALE: VERT. 1"=10'
HORIZ. 1"=40'
DATE: 8/25/04

DRAWN BY: LANDREY
DESIGNED BY: SANFORD
CHECKED BY: WATKINS

COMPUTER FILE NO. 01256GPE
PROJECT 01256
2/26/10-FAV

GREENE & BRADFORD, INC.
OF SPRINGFIELD
CONSULTING ENGINEERS
REGISTERED PROFESSIONAL ENGINEERS
ILLINOIS LICENSE NO. 081-000000
PROFESSIONAL & STRUCTURAL ENGINEERING CORPORATION
1011 7th Street, Springfield, IL 62761-1000